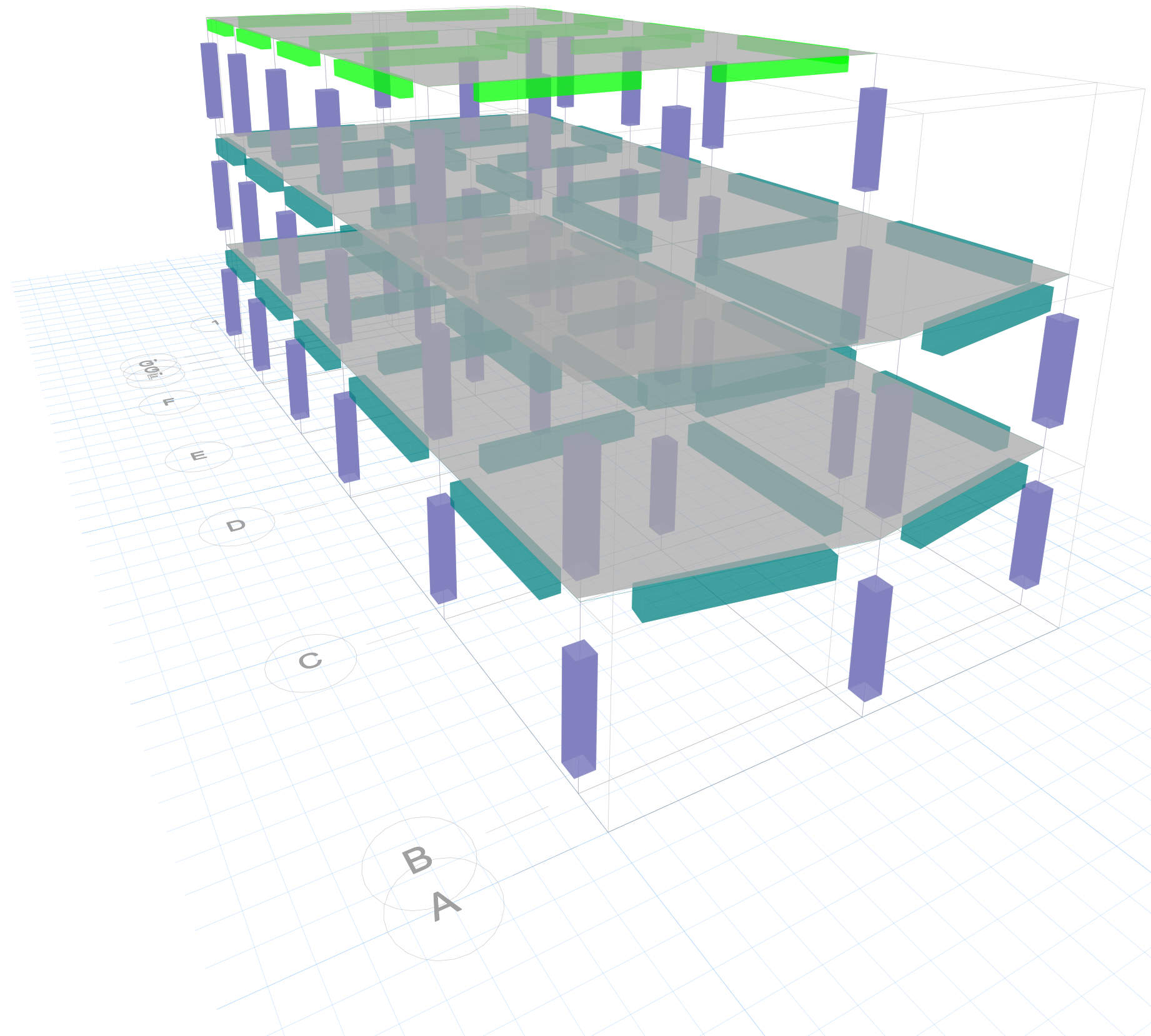
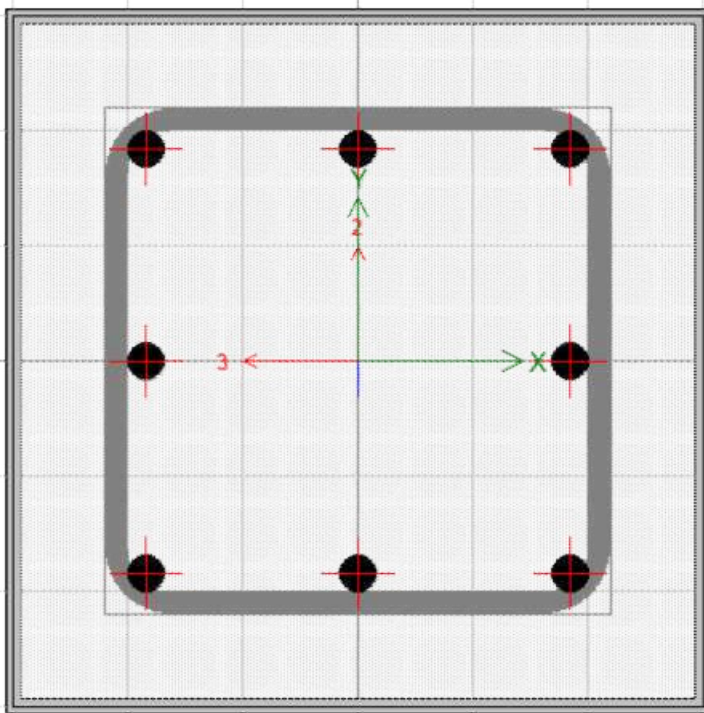
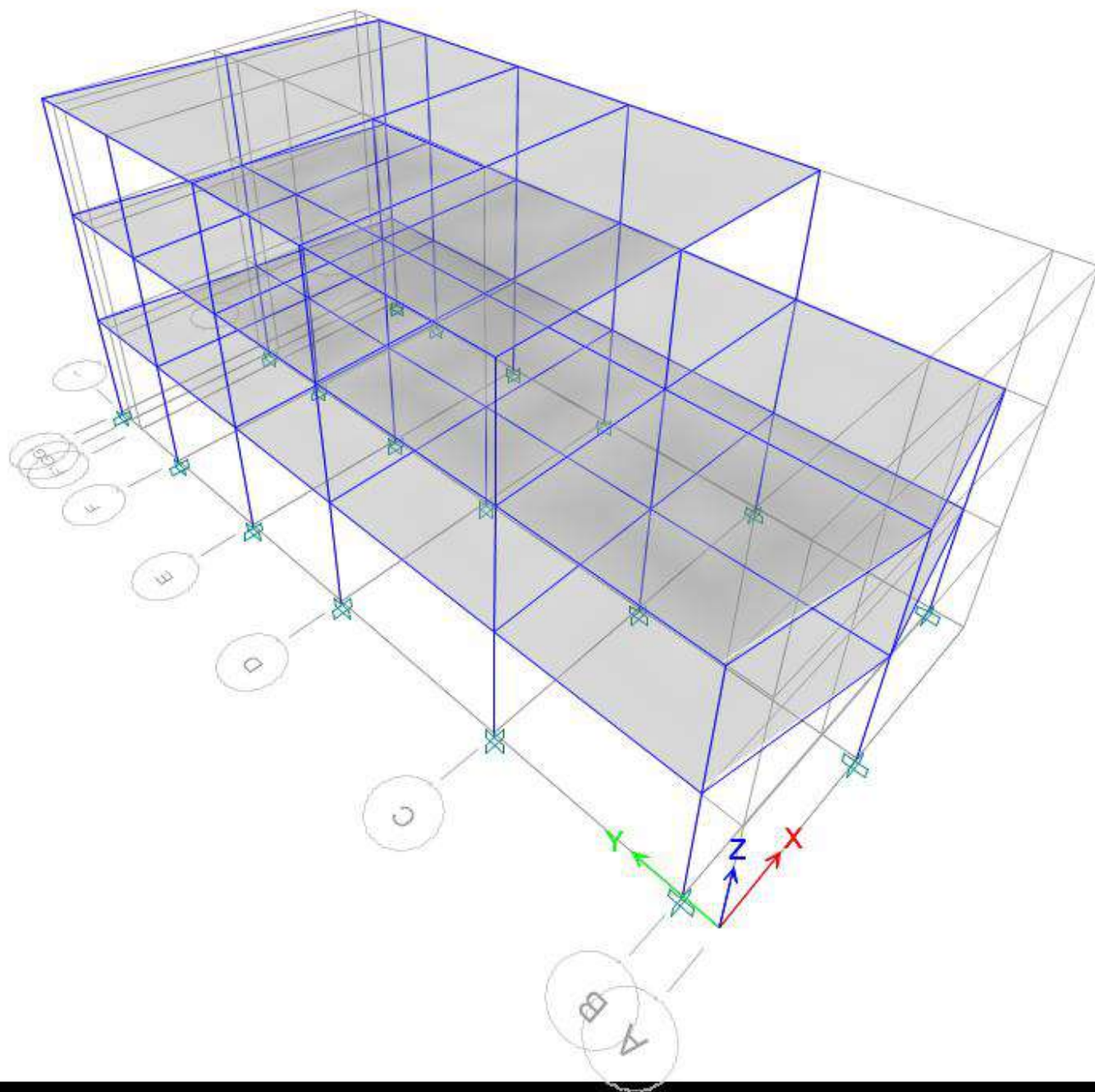


**ANEXO 6 REPORTE DE SOFTWARE DE MODELO
MATEMÁTICO DE LA INTERVENCIÓN
PROPUESTA**







Project Report

Model File: viviendaorlandoforero, Revision 0

29/06/2020

Table of Contents

1. Structure Data	4
1.1 Story Data	4
1.2 Grid Data	4
1.3 Mass	4
1.4 Groups	4
2. Properties	5
2.1 Materials	5
2.2 Frame Sections	5
2.3 Shell Sections	5
2.4 Reinforcement Sizes	5
2.5 Tendon Sections	5
3. Assignments	6
3.1 Joint Assignments	6
3.2 Frame Assignments	6
3.3 Shell Assignments	8
4. Loads	9
4.1 Load Patterns	9
4.2 Applied Loads	9
4.2.1 Area Loads	9
4.3 Load Cases	9
4.4 Load Combinations	9
5. Analysis Results	11
5.1 Structure Results	11
5.2 Story Results	12
5.3 Point Results	19
5.4 Modal Results	26

List of Tables

Table 1.1 Story Data	4
Table 1.2 Grid Systems	4
Table 1.3 Grid Lines	4
Table 1.4 Mass Source	4
Table 1.5 Centers of Mass and Rigidity	4
Table 1.6 Mass Summary by Diaphragm	4
Table 1.7 Mass Summary by Story	4
Table 1.8 Group Definitions	4
Table 2.1 Material Properties - Summary	5
Table 2.2 Frame Sections - Summary	5
Table 2.3 Shell Sections - Summary	5
Table 2.4 Reinforcing Bar Sizes	5
Table 2.5 Tendon Section Properties	5
Table 3.1 Joint Assignments - Summary	6
Table 3.2 Frame Assignments - Summary	7
Table 3.3 Shell Assignments - Summary	8
Table 4.1 Load Patterns	9
Table 4.2 Shell Loads - Uniform	9
Table 4.3 Load Cases - Summary	9
Table 4.4 Load Combinations	10
Table 5.1 Base Reactions	11
Table 5.2 Centers of Mass and Rigidity	11
Table 5.3 Diaphragm Center of Mass Displacements	11
Table 5.4 Story Max/Avg Displacements	12
Table 5.5 Story Drifts	14
Table 5.6 Story Forces	17
Table 5.7 Joint Reactions	19
Table 5.8 Modal Periods and Frequencies	26
Table 5.9 Modal Participating Mass Ratios	26
Table 5.10 Modal Load Participation Ratios	26
Table 5.11 Modal Direction Factors	26

1 Structure Data

This chapter provides model geometry information, including items such as story levels, point coordinates, and element connectivity.

1.1 Story Data

Table 1.1 - Story Data

Name	Height mm	Elevation mm	Master Story	Similar To	Splice Story
Story3	2620	7940	No	None	No
Story2	2700	5320	No	None	No
Story1	2620	2620	Yes	None	No
Base	0	0	No	None	No

1.2 Grid Data

Table 1.2 - Grid Systems

Name	Type	Story Range	X Origin m	Y Origin m	Rotation deg	Bubble Size mm	Color
G1	Cartesian	Default	0	0	0	1250	ffa0a0

Table 1.3 - Grid Lines

Grid System	Grid Direction	Grid ID	Visible	Bubble Location	Ordinate m
G1	X	1	Yes	End	0
G1	X	2	Yes	End	4
G1	X	3	Yes	End	8
G1	Y	A	Yes	Start	0
G1	Y	B	Yes	Start	0.68
G1	Y	C	Yes	Start	4.68
G1	Y	D	Yes	Start	8.93
G1	Y	E	Yes	Start	11.96
G1	Y	F	Yes	Start	14.9
G1	Y	F'	Yes	Start	16.54
G1	Y	G	Yes	Start	17.01
G1	Y	G'	Yes	Start	17.47

1.3 Mass

Table 1.4 - Mass Source

Name	Include Elements	Include Added Mass	Include Loads	Include Lateral	Include Vertical	Lump at Stories	IsDefault	Load Pattern	Multiplier
MsSrc1	No	No	Yes	Yes	Yes	Yes	Yes	Dead	1
MsSrc1	No	No	Yes	Yes	Yes	Yes	Yes	SD	1

Table 1.5 - Centers of Mass and Rigidity

Story	Diaphragm m	Mass X kg	Mass Y kg	XCM m	YCM m	Cumulative X kg	Cumulative Y kg	XCCM m	YCCM m	XCR m	YCR m
Story3	D1	8888.09	8888.09	3.9955	10.8933	8888.09	8888.09	3.9955	10.8933		
Story2	D1	129447.86	129447.86	3.9696	8.7805	138335.96	138335.96	3.9712	8.9162		
Story1	D1	131451.11	131451.11	3.967	8.7735	269787.07	269787.07	3.9692	8.8467		

Table 1.6 - Mass Summary by Diaphragm

Story	Diaphragm m	Mass X kg	Mass Y kg	Mass Moment of Inertia ton-m ²	X Mass Center m	Y Mass Center m
Story3	D1	8888.09	8888.09	259.3661	3.9955	10.8933
Story2	D1	129447.86	129447.86	4424.8275	3.9696	8.7805
Story1	D1	131451.11	131451.11	4526.392	3.967	8.7735

Table 1.7 - Mass Summary by Story

Story	UX kg	UY kg	UZ kg
Story3	8888.09	8888.09	8888.09
Story2	129447.86	129447.86	129447.86
Story1	131451.11	131451.11	131451.11
Base	3537	3537	3537

1.4 Groups

Table 1.8 - Group Definitions

Name	Color
All	Yellow

2 Properties

This chapter provides property information for materials, frame sections, shell sections, and links.

2.1 Materials

Table 2.1 - Material Properties - Summary

Name	Type	E MPa	ν	Unit Weight kN/m ³	Design Strengths
A416Gr270	Tendon	196500.6	0	76.9729	Fy=1689.91 MPa, Fu=1861.58 MPa
A615Gr60	Rebar	199947.98	0.3	76.9729	Fy=413.69 MPa, Fu=620.53 MPa
F'c 1700	Concrete	16281.28	0.2	23.536	Fc=12 MPa
placa	Concrete	0	0.2	1E-06	Fc=12 MPa

2.2 Frame Sections

Table 2.2 - Frame Sections - Summary

Name	Material	Shape
C(12.5X25)	F'c 1700	Concrete Rectangular
C(25X25)	F'c 1700	Concrete Rectangular
V(12.5x20)	F'c 1700	Concrete Rectangular
V(20X25)	F'c 1700	Concrete Rectangular

2.3 Shell Sections

Table 2.3 - Shell Sections - Summary

Name	Design Type	Element Type	Material	Total Thickness mm
Cubierta	Slab	Membrane	placa	100
E=0.10	Slab	Membrane	placa	0.1

2.4 Reinforcement Sizes

Table 2.4 - Reinforcing Bar Sizes

Name	Diameter mm	Area mm ²
18	18	255

2.5 Tendon Sections

Table 2.5 - Tendon Section Properties

Name	Material	StrandArea a mm ²	Color
Tendon1	A416Gr270	99	Aqua

3 Assignments

This chapter provides a listing of the assignments applied to the model.

3.1 Joint Assignments

Table 3.1 - Joint Assignments - Summary

Story	Label	Unique Name	Diaphragm	Restraints
Story3	2	16	D1	
Story3	5	21	D1	
Story3	6	26	D1	
Story3	7	31	D1	
Story3	8	36	D1	
Story3	10	46	D1	
Story3	11	7	D1	
Story3	12	56	D1	
Story3	14	66	D1	
Story3	16	76	D1	
Story3	17	81	D1	
Story3	18	86	D1	
Story3	19	91	D1	
Story3	20	96	D1	
Story2	1	5	D1	
Story2	2	18	D1	
Story2	5	23	D1	
Story2	6	28	D1	
Story2	7	33	D1	
Story2	8	38	D1	
Story2	9	43	D1	
Story2	10	48	D1	
Story2	11	8	D1	
Story2	12	58	D1	
Story2	13	63	D1	
Story2	14	68	D1	
Story2	15	73	D1	
Story2	16	78	D1	
Story2	17	83	D1	
Story2	18	88	D1	
Story2	19	93	D1	
Story2	20	98	D1	
Story2	23	101	D1	
Story1	1	2	D1	
Story1	2	15	D1	
Story1	5	20	D1	
Story1	6	25	D1	
Story1	7	30	D1	
Story1	8	35	D1	
Story1	9	40	D1	
Story1	10	45	D1	
Story1	11	50	D1	
Story1	12	55	D1	
Story1	13	60	D1	
Story1	14	65	D1	
Story1	15	70	D1	
Story1	16	75	D1	
Story1	17	80	D1	
Story1	18	85	D1	
Story1	19	90	D1	
Story1	20	95	D1	
Story1	23	52	D1	
Base	1	1	From Area	UX; UY; UZ; RX; RY; RZ
Base	2	14	From Area	UX; UY; UZ; RX; RY; RZ
Base	5	19	From Area	UX; UY; UZ; RX; RY; RZ
Base	6	24	From Area	UX; UY; UZ; RX; RY; RZ
Base	7	29	From Area	UX; UY; UZ; RX; RY; RZ
Base	8	34	From Area	UX; UY; UZ; RX; RY; RZ
Base	9	39	From Area	UX; UY; UZ; RX; RY; RZ
Base	10	44	From Area	UX; UY; UZ; RX; RY; RZ
Base	11	49	From Area	UX; UY; UZ; RX; RY; RZ
Base	12	54	From Area	UX; UY; UZ; RX; RY; RZ
Base	13	59	From Area	UX; UY; UZ; RX; RY; RZ
Base	14	64	From Area	UX; UY; UZ; RX; RY; RZ
Base	15	69	From Area	UX; UY; UZ; RX; RY; RZ
Base	16	74	From Area	UX; UY; UZ; RX; RY; RZ
Base	17	79	From Area	UX; UY; UZ; RX; RY; RZ
Base	18	84	From Area	UX; UY; UZ; RX; RY; RZ
Base	19	89	From Area	UX; UY; UZ; RX; RY; RZ
Base	20	94	From Area	UX; UY; UZ; RX; RY; RZ

3.2 Frame Assignments

Table 3.2 - Frame Assignments - Summary

Story	Label	Unique Name	Design Type	Length mm	Analysis Section	Design Section	Max Station Spacing mm	Min Number Stations
Story3	C2	11	Column	2620	C(12.5X25)	C(12.5X25)		3
Story3	C3	15	Column	2620	C(12.5X25)	C(12.5X25)		3
Story3	C4	19	Column	2620	C(12.5X25)	C(12.5X25)		3
Story3	C5	23	Column	2620	C(12.5X25)	C(12.5X25)		3
Story3	C6	27	Column	2620	C(12.5X25)	C(12.5X25)		3
Story3	C8	35	Column	2620	C(12.5X25)	C(12.5X25)		3
Story3	C10	43	Column	2620	C(25X25)	C(25X25)		3
Story3	C12	51	Column	2620	C(12.5X25)	C(12.5X25)		3
Story3	C14	59	Column	2620	C(12.5X25)	C(12.5X25)		3
Story3	C15	63	Column	2620	C(12.5X25)	C(12.5X25)		3
Story3	C16	67	Column	2620	C(25X25)	C(25X25)		3
Story3	C17	71	Column	2620	C(12.5X25)	C(12.5X25)		3
Story3	C18	75	Column	2620	C(12.5X25)	C(12.5X25)		3
Story2	C1	4	Column	2700	C(25X25)	C(25X25)		3
Story2	C2	12	Column	2700	C(25X25)	C(25X25)		3
Story2	C3	16	Column	2700	C(25X25)	C(25X25)		3
Story2	C4	20	Column	2700	C(25X25)	C(25X25)		3
Story2	C5	24	Column	2700	C(25X25)	C(25X25)		3
Story2	C6	28	Column	2700	C(25X25)	C(25X25)		3
Story2	C7	32	Column	2700	C(25X25)	C(25X25)		3
Story2	C8	36	Column	2700	C(25X25)	C(25X25)		3
Story2	C10	44	Column	2700	C(25X25)	C(25X25)		3
Story2	C11	48	Column	2700	C(25X25)	C(25X25)		3
Story2	C12	52	Column	2700	C(25X25)	C(25X25)		3
Story2	C13	56	Column	2700	C(25X25)	C(25X25)		3
Story2	C14	60	Column	2700	C(25X25)	C(25X25)		3
Story2	C15	64	Column	2700	C(25X25)	C(25X25)		3
Story2	C16	68	Column	2700	C(25X25)	C(25X25)		3
Story2	C17	72	Column	2700	C(25X25)	C(25X25)		3
Story2	C18	76	Column	2700	C(25X25)	C(25X25)		3
Story1	C1	1	Column	2620	C(25X25)	C(25X25)		3
Story1	C2	9	Column	2620	C(25X25)	C(25X25)		3
Story1	C3	13	Column	2620	C(25X25)	C(25X25)		3
Story1	C4	17	Column	2620	C(25X25)	C(25X25)		3
Story1	C5	21	Column	2620	C(25X25)	C(25X25)		3
Story1	C6	25	Column	2620	C(25X25)	C(25X25)		3
Story1	C7	29	Column	2620	C(25X25)	C(25X25)		3
Story1	C8	33	Column	2620	C(25X25)	C(25X25)		3
Story1	C9	37	Column	2620	C(25X25)	C(25X25)		3
Story1	C10	41	Column	2620	C(25X25)	C(25X25)		3
Story1	C11	45	Column	2620	C(25X25)	C(25X25)		3
Story1	C12	49	Column	2620	C(25X25)	C(25X25)		3
Story1	C13	53	Column	2620	C(25X25)	C(25X25)		3
Story1	C14	57	Column	2620	C(25X25)	C(25X25)		3
Story1	C15	61	Column	2620	C(25X25)	C(25X25)		3
Story1	C16	65	Column	2620	C(25X25)	C(25X25)		3
Story1	C17	69	Column	2620	C(25X25)	C(25X25)		3
Story1	C18	73	Column	2620	C(25X25)	C(25X25)		3
Story3	B2	77	Beam	4250	V(12.5x20)	V(12.5x20)	500	
Story3	B3	81	Beam	3030	V(12.5x20)	V(12.5x20)	500	
Story3	B4	85	Beam	2940	V(12.5x20)	V(12.5x20)	500	
Story3	B5	89	Beam	2570	V(12.5x20)	V(12.5x20)	500	
Story3	B8	101	Beam	3030	V(12.5x20)	V(12.5x20)	500	
Story3	B12	117	Beam	4250	V(12.5x20)	V(12.5x20)	500	
Story3	B13	121	Beam	3030	V(12.5x20)	V(12.5x20)	500	
Story3	B14	125	Beam	2940	V(12.5x20)	V(12.5x20)	500	
Story3	B15	129	Beam	1640	V(12.5x20)	V(12.5x20)	500	
Story3	B18	141	Beam	4000	V(12.5x20)	V(12.5x20)	500	
Story3	B19	145	Beam	4000	V(12.5x20)	V(12.5x20)	500	
Story3	B20	149	Beam	4000	V(12.5x20)	V(12.5x20)	500	
Story3	B21	153	Beam	4000	V(12.5x20)	V(12.5x20)	500	
Story3	B22	157	Beam	4000	V(12.5x20)	V(12.5x20)	500	
Story3	B23	161	Beam	4000	V(12.5x20)	V(12.5x20)	500	
Story3	B26	173	Beam	4026.4	V(12.5x20)	V(12.5x20)	500	
Story3	B27	177	Beam	4027.5	V(12.5x20)	V(12.5x20)	500	
Story2	B1	38	Beam	4000	V(20X25)	V(20X25)	500	
Story2	B2	78	Beam	4250	V(20X25)	V(20X25)	500	
Story2	B3	82	Beam	3030	V(20X25)	V(20X25)	500	
Story2	B4	86	Beam	2940	V(20X25)	V(20X25)	500	
Story2	B5	90	Beam	2570	V(20X25)	V(20X25)	500	
Story2	B6	94	Beam	4680	V(20X25)	V(20X25)	500	
Story2	B7	98	Beam	4250	V(20X25)	V(20X25)	500	
Story2	B8	102	Beam	3030	V(20X25)	V(20X25)	500	
Story2	B9	106	Beam	2940	V(20X25)	V(20X25)	500	
Story2	B10	110	Beam	2110	V(20X25)	V(20X25)	500	
Story2	B11	114	Beam	4000	V(20X25)	V(20X25)	500	
Story2	B12	118	Beam	4250	V(20X25)	V(20X25)	500	
Story2	B13	122	Beam	3030	V(20X25)	V(20X25)	500	
Story2	B14	126	Beam	2940	V(20X25)	V(20X25)	500	
Story2	B15	130	Beam	1640	V(20X25)	V(20X25)	500	
Story2	B16	134	Beam	4057.4	V(20X25)	V(20X25)	500	
Story2	B17	138	Beam	4057.4	V(20X25)	V(20X25)	500	
Story2	B18	142	Beam	4000	V(20X25)	V(20X25)	500	
Story2	B19	146	Beam	4000	V(20X25)	V(20X25)	500	
Story2	B20	150	Beam	4000	V(20X25)	V(20X25)	500	
Story2	B21	154	Beam	4000	V(20X25)	V(20X25)	500	
Story2	B22	158	Beam	4000	V(20X25)	V(20X25)	500	
Story2	B23	162	Beam	4000	V(20X25)	V(20X25)	500	
Story2	B24	166	Beam	4000	V(20X25)	V(20X25)	500	
Story2	B25	170	Beam	4000	V(20X25)	V(20X25)	500	
Story2	B26	174	Beam	4026.4	V(20X25)	V(20X25)	500	
Story2	B27	178	Beam	4027.5	V(20X25)	V(20X25)	500	

Story	Label	Unique Name	Design Type	Length mm	Analysis Section	Design Section	Max Station Spacing mm	Min Number Stations
Story1	B1	6	Beam	4000	V(20X25)	V(20X25)	500	
Story1	B2	39	Beam	4250	V(20X25)	V(20X25)	500	
Story1	B3	79	Beam	3030	V(20X25)	V(20X25)	500	
Story1	B4	83	Beam	2940	V(20X25)	V(20X25)	500	
Story1	B5	87	Beam	2570	V(20X25)	V(20X25)	500	
Story1	B6	91	Beam	4680	V(20X25)	V(20X25)	500	
Story1	B7	95	Beam	4250	V(20X25)	V(20X25)	500	
Story1	B8	99	Beam	3030	V(20X25)	V(20X25)	500	
Story1	B9	103	Beam	2940	V(20X25)	V(20X25)	500	
Story1	B10	107	Beam	2110	V(20X25)	V(20X25)	500	
Story1	B11	111	Beam	4000	V(20X25)	V(20X25)	500	
Story1	B12	115	Beam	4250	V(20X25)	V(20X25)	500	
Story1	B13	119	Beam	3030	V(20X25)	V(20X25)	500	
Story1	B14	123	Beam	2940	V(20X25)	V(20X25)	500	
Story1	B15	127	Beam	1640	V(20X25)	V(20X25)	500	
Story1	B16	131	Beam	4057.4	V(20X25)	V(20X25)	500	
Story1	B17	135	Beam	4057.4	V(20X25)	V(20X25)	500	
Story1	B18	139	Beam	4000	V(20X25)	V(20X25)	500	
Story1	B19	143	Beam	4000	V(20X25)	V(20X25)	500	
Story1	B20	147	Beam	4000	V(20X25)	V(20X25)	500	
Story1	B21	151	Beam	4000	V(20X25)	V(20X25)	500	
Story1	B22	155	Beam	4000	V(20X25)	V(20X25)	500	
Story1	B23	159	Beam	4000	V(20X25)	V(20X25)	500	
Story1	B24	163	Beam	4000	V(20X25)	V(20X25)	500	
Story1	B25	167	Beam	4000	V(20X25)	V(20X25)	500	
Story1	B26	171	Beam	4026.4	V(20X25)	V(20X25)	500	
Story1	B27	175	Beam	4027.5	V(20X25)	V(20X25)	500	

3.3 Shell Assignments

Table 3.3 - Shell Assignments - Summary

Story	Label	Unique Name	Section
Story3	F5	26	Cubierta
Story3	F6	27	Cubierta
Story3	F12	12	Cubierta
Story3	F13	28	Cubierta
Story2	F1	32	E=0.10
Story2	F2	33	E=0.10
Story2	F3	34	E=0.10
Story2	F4	35	E=0.10
Story2	F5	36	E=0.10
Story2	F6	37	E=0.10
Story2	F7	38	E=0.10
Story2	F8	39	E=0.10
Story2	F9	40	E=0.10
Story2	F10	41	E=0.10
Story1	F1	2	E=0.10
Story1	F2	3	E=0.10
Story1	F3	4	E=0.10
Story1	F4	5	E=0.10
Story1	F5	6	E=0.10
Story1	F6	7	E=0.10
Story1	F7	8	E=0.10
Story1	F8	9	E=0.10
Story1	F9	10	E=0.10
Story1	F10	11	E=0.10

4 Loads

This chapter provides loading information as applied to the model.

4.1 Load Patterns

Table 4.1 - Load Patterns

Name	Type	Self Weight Multiplier
Dead	Dead	1
Live	Live	0
SD	Superimposed Dead	0

4.2 Applied Loads

4.2.1 Area Loads

Table 4.2 - Shell Loads - Uniform

Story	Label	Unique Name	Load Pattern	Direction	Load kN/m ²
Story3	F5	26	Live	Gravity	0.5
Story3	F6	27	Live	Gravity	0.5
Story3	F12	12	Live	Gravity	0.5
Story3	F13	28	Live	Gravity	0.5
Story2	F1	32	Live	Gravity	1.8
Story2	F2	33	Live	Gravity	1.8
Story2	F3	34	Live	Gravity	1.8
Story2	F4	35	Live	Gravity	1.8
Story2	F5	36	Live	Gravity	1.8
Story2	F6	37	Live	Gravity	1.8
Story2	F7	38	Live	Gravity	1.8
Story2	F8	39	Live	Gravity	1.8
Story2	F9	40	Live	Gravity	1.8
Story2	F10	41	Live	Gravity	1.8
Story1	F1	2	Live	Gravity	1.8
Story1	F2	3	Live	Gravity	1.8
Story1	F3	4	Live	Gravity	1.8
Story1	F4	5	Live	Gravity	1.8
Story1	F5	6	Live	Gravity	1.8
Story1	F6	7	Live	Gravity	1.8
Story1	F7	8	Live	Gravity	1.8
Story1	F8	9	Live	Gravity	1.8
Story1	F9	10	Live	Gravity	1.8
Story1	F10	11	Live	Gravity	1.8
Story3	F5	26	SD	Gravity	0.4
Story3	F6	27	SD	Gravity	0.4
Story3	F12	12	SD	Gravity	0.4
Story3	F13	28	SD	Gravity	0.4
Story2	F1	32	SD	Gravity	8.36
Story2	F2	33	SD	Gravity	8.36
Story2	F3	34	SD	Gravity	8.36
Story2	F4	35	SD	Gravity	8.36
Story2	F5	36	SD	Gravity	8.36
Story2	F6	37	SD	Gravity	8.36
Story2	F7	38	SD	Gravity	8.36
Story2	F8	39	SD	Gravity	8.36
Story2	F9	40	SD	Gravity	8.36
Story2	F10	41	SD	Gravity	8.36
Story1	F1	2	SD	Gravity	8.36
Story1	F2	3	SD	Gravity	8.36
Story1	F3	4	SD	Gravity	8.36
Story1	F4	5	SD	Gravity	8.36
Story1	F5	6	SD	Gravity	8.36
Story1	F6	7	SD	Gravity	8.36
Story1	F7	8	SD	Gravity	8.36
Story1	F8	9	SD	Gravity	8.36
Story1	F9	10	SD	Gravity	8.36
Story1	F10	11	SD	Gravity	8.36

4.3 Load Cases

Table 4.3 - Load Cases - Summary

Name	Type
Dead	Linear Static
Live	Linear Static
AME EX	Response Spectrum
AME EY	Response Spectrum
AME FY	Response Spectrum
AME FX	Response Spectrum
SD	Linear Static
CM	Linear Static

4.4 Load Combinations

Table 4.4 - Load Combinations

Name	Load Case/Combo	Scale Factor	Type	Auto
Design 1	CM	1.4	Linear Add	No
Design 2	CM	1.2	Linear Add	No
Design 2	Live	1.6		No
Design 3	CM	1.2	Linear Add	No
Design 3	Live	1		No

Name	Load Case/Combo	Scale Factor	Type	Auto
Design 3	AME EX	0.2		No
Design 3	AME EY	0.06		No
Design 5	CM	0.9	Linear Add	No
Design 5	AME EX	0.06		No
Design 5	AME EY	0.2		No
Derivas 1	CM	1.2	Linear Add	No
Derivas 1	Live	1		No
Derivas 1	AME FX	1		No
Derivas 1	AME FY	0.3		No
Derivas 2	CM	1.2	Linear Add	No
Derivas 2	Live	1		No
Derivas 2	AME FX	0.3		No
Derivas 2	AME FY	1		No
Design 6	CM	0.9	Linear Add	No
Design 6	AME EX	0.2		No
Design 6	AME EY	0.06		No
Servicio	Dead	1	Linear Add	No
Servicio	SD	1		No
Servicio	Live	1		No
envolvente	Design 1	1	Envelope	No
envolvente	Design 2	1		No
envolvente	Design 3	1		No
envolvente	Design 5	1		No
envolvente	Design 6	1		No
envolvente	Design 4	1		No
Design 4	CM	1.2	Linear Add	No
Design 4	Live	1		No
Design 4	AME EX	0.06		No
Design 4	AME EY	0.2		No
Derivas 3	CM	0.9	Linear Add	No
Derivas 3	AME FX	1		No
Derivas 3	AME FY	0.3		No
Derivas 4	CM	0.9	Linear Add	No
Derivas 4	AME FX	0.3		No
Derivas 4	AME FY	1		No

5 Analysis Results

This chapter provides analysis results.

5.1 Structure Results

Table 5.1 - Base Reactions

Load Case/Combo	FX kN	FY kN	FZ kN	MX kN-m	MY kN-m	MZ kN-m	X m	Y m	Z m
Dead	0	0	414.0185	3974.1785	-1652.694	0	0	0	0
Live	0	0	528.784	4698.5146	-2096.2403	0	0	0	0
AME EX Max	2175.7153	59.3672	0.884	268.7833	10184.6143	17275.9802	0	0	0
AME EY Max	59.3672	2290.2206	17.2474	10530.5748	295.2689	8395.3206	0	0	0
AME FY Max	59.3672	2290.2206	17.2474	10530.5748	295.2689	8395.3206	0	0	0
AME FX Max	2175.7153	59.3672	0.884	268.7833	10184.6143	17275.9802	0	0	0
SD	0	0	2266.3768	19766.4359	-8987.2802	0	0	0	0
CM	0	0	2680.3953	23740.6145	-10639.9742	0	0	0	0
Design 1	0	0	3752.5535	33236.8603	-14895.9639	0	0	0	0
Design 2	0	0	4062.5288	36006.3607	-16121.9535	0	0	0	0
Design 3 Max	438.7051	149.2867	3746.4701	33872.8431	-12809.5703	3958.9153	0	0	0
Design 3 Min	-438.7051	-149.2867	3744.0468	32501.6608	-16918.8483	-3958.9153	0	0	0
Design 5 Max	142.4164	461.6062	2415.8583	23488.795	-8905.8462	2715.6229	0	0	0
Design 5 Min	-142.4164	-461.6062	2408.8533	19244.3111	-10246.1074	-2715.6229	0	0	0
Derivas 1 Max	2193.5255	746.4334	3751.3166	36615.2078	-4591.0143	19794.5764	0	0	0
Derivas 1 Min	-2193.5255	-746.4334	3739.2002	29759.2962	-25137.4043	-19794.5764	0	0	0
Derivas 2 Max	712.0818	2308.0308	3762.771	43798.4618	-11513.5562	13578.1146	0	0	0
Derivas 2 Min	-712.0818	-2308.0308	3727.7458	22576.0421	-18214.8625	-13578.1146	0	0	0
Design 6 Max	438.7051	149.2867	2413.5675	22052.1442	-7521.3378	3958.9153	0	0	0
Design 6 Min	-438.7051	-149.2867	2411.1442	20680.9619	-11630.6158	-3958.9153	0	0	0
Servicio	0	0	3209.1793	28439.1291	-12736.2145	0	0	0	0
envolvente Max	438.7051	461.6062	4062.5288	36006.3607	-7521.3378	3958.9153	0	0	0
envolvente Min	-438.7051	-461.6062	2408.8533	19244.3111	-16918.8483	-3958.9153	0	0	0
Design 4 Max	142.4164	461.6062	3748.7609	35309.4939	-14194.0787	2715.6229	0	0	0
Design 4 Min	-142.4164	-461.6062	3741.7559	31065.01	-15534.34	-2715.6229	0	0	0
Derivas 3 Max	2193.5255	746.4334	2418.414	24794.5088	697.2182	19794.5764	0	0	0
Derivas 3 Min	-2193.5255	-746.4334	2406.2976	17938.5972	-19849.1718	-19794.5764	0	0	0
Derivas 4 Max	712.0818	2308.0308	2429.8684	31977.7629	-6225.3236	13578.1146	0	0	0
Derivas 4 Min	-712.0818	-2308.0308	2394.8432	10755.3432	-12926.6299	-13578.1146	0	0	0

Table 5.2 - Centers of Mass and Rigidity

Story	Diaphragm	Mass X kg	Mass Y kg	XCM m	YCM m	Cumulative X kg	Cumulative Y kg	XCCM m	YCCM m	XCR m	YCR m
Story3	D1	8888.09	8888.09	3.9955	10.8933	8888.09	8888.09	3.9955	10.8933		
Story2	D1	129447.86	129447.86	3.9696	8.7805	138335.96	138335.96	3.9712	8.9162		
Story1	D1	131451.11	131451.11	3.967	8.7735	269787.07	269787.07	3.9692	8.8467		

Table 5.3 - Diaphragm Center of Mass Displacements

Story	Diaphragm	Load Case/Combo	UX mm	UY mm	RZ rad	Point	X m	Y m	Z m
Story3	D1	Dead	-0.09	-0.199	4E-06	3	3.9955	10.8933	7.94
Story3	D1	Live	-0.161	-0.171	-2E-06	3	3.9955	10.8933	7.94
Story3	D1	AME EX Max	262.058	5.055	0.010563	3	3.9955	10.8933	7.94
Story3	D1	AME EY Max	15.039	200.849	0.004455	3	3.9955	10.8933	7.94
Story3	D1	AME FY Max	15.039	200.849	0.004455	3	3.9955	10.8933	7.94
Story3	D1	AME FX Max	262.058	5.055	0.010563	3	3.9955	10.8933	7.94
Story3	D1	SD	-0.68	-0.309	-2.7E-05	3	3.9955	10.8933	7.94
Story3	D1	CM	-0.77	-0.507	-2.2E-05	3	3.9955	10.8933	7.94
Story3	D1	Design 1	-1.078	-0.71	-3.1E-05	3	3.9955	10.8933	7.94
Story3	D1	Design 2	-1.182	-0.882	-3E-05	3	3.9955	10.8933	7.94
Story3	D1	Design 3 Max	52.229	12.282	0.002351	3	3.9955	10.8933	7.94
Story3	D1	Design 3 Min	-54.399	-13.841	-0.002408	3	3.9955	10.8933	7.94
Story3	D1	Design 5 Max	18.039	40.016	0.001505	3	3.9955	10.8933	7.94
Story3	D1	Design 5 Min	-19.424	-40.93	-0.001545	3	3.9955	10.8933	7.94
Story3	D1	Derivas 1 Max	265.485	64.53	0.011871	3	3.9955	10.8933	7.94
Story3	D1	Derivas 1 Min	-267.655	-66.089	-0.011928	3	3.9955	10.8933	7.94
Story3	D1	Derivas 2 Max	92.572	201.586	0.007596	3	3.9955	10.8933	7.94
Story3	D1	Derivas 2 Min	-94.741	-203.145	-0.007653	3	3.9955	10.8933	7.94
Story3	D1	Design 6 Max	52.621	12.605	0.00236	3	3.9955	10.8933	7.94
Story3	D1	Design 6 Min	-54.007	-13.519	-0.0024	3	3.9955	10.8933	7.94
Story3	D1	Servicio	-0.931	-0.678	-2.4E-05	3	3.9955	10.8933	7.94
Story3	D1	envolvente Max	52.621	40.016	0.00236	3	3.9955	10.8933	7.94

Story	Diaphragm	Load Case/Combo	UX mm	UY mm	RZ rad	Point	X m	Y m	Z m
Story3	D1	envolvente Min	-54.399	-41.253	-0.002408	3	3.9955	10.8933	7.94
Story3	D1	Design 4 Max	17.646	39.693	0.001496	3	3.9955	10.8933	7.94
Story3	D1	Design 4 Min	-19.816	-41.253	-0.001553	3	3.9955	10.8933	7.94
Story3	D1	Derivas 3 Max	265.877	64.853	0.01188	3	3.9955	10.8933	7.94
Story3	D1	Derivas 3 Min	-267.263	-65.766	-0.01192	3	3.9955	10.8933	7.94
Story3	D1	Derivas 4 Max	92.964	201.908	0.007604	3	3.9955	10.8933	7.94
Story3	D1	Derivas 4 Min	-94.349	-202.822	-0.007644	3	3.9955	10.8933	7.94
Story2	D1	Dead	-0.003	0.02	2.312E-07	4	3.9696	8.7805	5.32
Story2	D1	Live	-0.028	0.104	-8E-06	4	3.9696	8.7805	5.32
Story2	D1	AME EX Max	208.572	3.88	0.00832	4	3.9696	8.7805	5.32
Story2	D1	AME EY Max	3.623	161.373	0.003374	4	3.9696	8.7805	5.32
Story2	D1	AME FY Max	3.623	161.373	0.003374	4	3.9696	8.7805	5.32
Story2	D1	AME FX Max	208.572	3.88	0.00832	4	3.9696	8.7805	5.32
Story2	D1	SD	-0.122	0.54	-3.6E-05	4	3.9696	8.7805	5.32
Story2	D1	CM	-0.124	0.56	-3.6E-05	4	3.9696	8.7805	5.32
Story2	D1	Design 1	-0.174	0.784	-5E-05	4	3.9696	8.7805	5.32
Story2	D1	Design 2	-0.194	0.839	-5.5E-05	4	3.9696	8.7805	5.32
Story2	D1	Design 3 Max	41.755	11.234	0.001816	4	3.9696	8.7805	5.32
Story2	D1	Design 3 Min	-42.109	-9.682	-0.001917	4	3.9696	8.7805	5.32
Story2	D1	Design 5 Max	13.127	33.011	0.001142	4	3.9696	8.7805	5.32
Story2	D1	Design 5 Min	-13.351	-32.003	-0.001206	4	3.9696	8.7805	5.32
Story2	D1	Derivas 1 Max	209.482	53.068	0.009282	4	3.9696	8.7805	5.32
Story2	D1	Derivas 1 Min	-209.836	-51.516	-0.009383	4	3.9696	8.7805	5.32
Story2	D1	Derivas 2 Max	66.018	163.313	0.005819	4	3.9696	8.7805	5.32
Story2	D1	Derivas 2 Min	-66.372	-161.761	-0.00592	4	3.9696	8.7805	5.32
Story2	D1	Design 6 Max	41.82	10.962	0.001834	4	3.9696	8.7805	5.32
Story2	D1	Design 6 Min	-42.044	-9.955	-0.001899	4	3.9696	8.7805	5.32
Story2	D1	Servicio	-0.152	0.664	-4.3E-05	4	3.9696	8.7805	5.32
Story2	D1	envolvente Max	41.82	33.283	0.001834	4	3.9696	8.7805	5.32
Story2	D1	envolvente Min	-42.109	-32.003	-0.001917	4	3.9696	8.7805	5.32
Story2	D1	Design 4 Max	13.062	33.283	0.001123	4	3.9696	8.7805	5.32
Story2	D1	Design 4 Min	-13.416	-31.731	-0.001224	4	3.9696	8.7805	5.32
Story2	D1	Derivas 3 Max	209.547	52.796	0.0093	4	3.9696	8.7805	5.32
Story2	D1	Derivas 3 Min	-209.771	-51.788	-0.009365	4	3.9696	8.7805	5.32
Story2	D1	Derivas 4 Max	66.083	163.041	0.005838	4	3.9696	8.7805	5.32
Story2	D1	Derivas 4 Min	-66.307	-162.033	-0.005902	4	3.9696	8.7805	5.32
Story1	D1	Dead	-0.001	0.005	3.828E-08	6	3.967	8.7735	2.62
Story1	D1	Live	-0.009	0.016	-2E-06	6	3.967	8.7735	2.62
Story1	D1	AME EX Max	85.292	1.702	0.003621	6	3.967	8.7735	2.62
Story1	D1	AME EY Max	1.316	71.001	0.00144	6	3.967	8.7735	2.62
Story1	D1	AME FY Max	1.316	71.001	0.00144	6	3.967	8.7735	2.62
Story1	D1	AME FX Max	85.292	1.702	0.003621	6	3.967	8.7735	2.62
Story1	D1	SD	-0.039	0.083	-9E-06	6	3.967	8.7735	2.62
Story1	D1	CM	-0.04	0.088	-9E-06	6	3.967	8.7735	2.62
Story1	D1	Design 1	-0.056	0.123	-1.3E-05	6	3.967	8.7735	2.62
Story1	D1	Design 2	-0.062	0.131	-1.4E-05	6	3.967	8.7735	2.62
Story1	D1	Design 3 Max	17.081	4.722	0.000798	6	3.967	8.7735	2.62
Story1	D1	Design 3 Min	-17.194	-4.479	-0.000823	6	3.967	8.7735	2.62
Story1	D1	Design 5 Max	5.345	14.381	0.000497	6	3.967	8.7735	2.62
Story1	D1	Design 5 Min	-5.417	-14.223	-0.000513	6	3.967	8.7735	2.62
Story1	D1	Derivas 1 Max	85.63	23.124	0.00404	6	3.967	8.7735	2.62
Story1	D1	Derivas 1 Min	-85.743	-22.88	-0.004066	6	3.967	8.7735	2.62
Story1	D1	Derivas 2 Max	26.847	71.633	0.002513	6	3.967	8.7735	2.62
Story1	D1	Derivas 2 Min	-26.96	-71.39	-0.002539	6	3.967	8.7735	2.62
Story1	D1	Design 6 Max	17.102	4.68	0.000802	6	3.967	8.7735	2.62
Story1	D1	Design 6 Min	-17.173	-4.521	-0.000819	6	3.967	8.7735	2.62
Story1	D1	Servicio	-0.049	0.104	-1.1E-05	6	3.967	8.7735	2.62
Story1	D1	envolvente Max	17.102	14.424	0.000802	6	3.967	8.7735	2.62
Story1	D1	envolvente Min	-17.194	-14.223	-0.000823	6	3.967	8.7735	2.62
Story1	D1	Design 4 Max	5.324	14.424	0.000492	6	3.967	8.7735	2.62
Story1	D1	Design 4 Min	-5.437	-14.181	-0.000518	6	3.967	8.7735	2.62
Story1	D1	Derivas 3 Max	85.651	23.081	0.004045	6	3.967	8.7735	2.62
Story1	D1	Derivas 3 Min	-85.723	-22.923	-0.004061	6	3.967	8.7735	2.62

Story	Diaphragm	Load Case/Combo	UX mm	UY mm	RZ rad	Point	X m	Y m	Z m
		Min							
Story1	D1	Derivas 4 Max	26.868	71.591	0.002518	6	3.967	8.7735	2.62
Story1	D1	Derivas 4 Min	-26.939	-71.432	-0.002534	6	3.967	8.7735	2.62

5.2 Story Results

Table 5.4 - Story Max/Avg Displacements

Story	Load Case/Combo	Direction	Maximum mm	Average mm	Ratio
Story3	Dead	X	0.118	0.09	1.302
Story3	Dead	Y	0.216	0.199	1.086
Story2	Dead	X	0.005	0.003	1.802
Story2	Dead	Y	0.021	0.02	1.047
Story1	Dead	Y	0.006	0.005	1.028
Story3	Live	X	0.173	0.161	1.074
Story3	Live	Y	0.178	0.171	1.044
Story2	Live	X	0.095	0.028	3.367
Story2	Live	Y	0.134	0.104	1.293
Story1	Live	X	0.026	0.009	2.93
Story1	Live	Y	0.024	0.016	1.485
Story3	AME EX Max	X	317.091	263.812	1.202
Story2	AME EX Max	X	272.642	212.969	1.28
Story1	AME EX Max	X	113.205	87.323	1.296
Story1	AME EX Max	Y	15.749	8.765	1.797
Story3	AME EY Max	X	44.207	25.387	1.741
Story3	AME EY Max	Y	212.594	201.309	1.056
Story2	AME EY Max	X	32.697	18.395	1.777
Story2	AME EY Max	Y	169.782	161.671	1.05
Story1	AME EY Max	X	13.703	7.611	1.8
Story1	AME EY Max	Y	74.448	71.129	1.047
Story3	AME FY Max	X	44.207	25.387	1.741
Story3	AME FY Max	Y	212.594	201.309	1.056
Story2	AME FY Max	X	32.697	18.395	1.777
Story2	AME FY Max	Y	169.782	161.671	1.05
Story1	AME FY Max	X	13.703	7.611	1.8
Story1	AME FY Max	Y	74.448	71.129	1.047
Story3	AME FX Max	X	317.091	263.812	1.202
Story2	AME FX Max	X	272.642	212.969	1.28
Story1	AME FX Max	X	113.205	87.323	1.296
Story1	AME FX Max	Y	15.749	8.765	1.797
Story3	SD	X	0.845	0.675	1.251
Story3	SD	Y	0.415	0.309	1.343
Story2	SD	X	0.438	0.124	3.543
Story2	SD	Y	0.683	0.539	1.267
Story1	SD	X	0.119	0.04	3.005
Story1	SD	Y	0.119	0.082	1.443
Story3	CM	X	0.908	0.766	1.186
Story3	CM	Y	0.597	0.508	1.175
Story2	CM	X	0.438	0.126	3.476
Story2	CM	Y	0.702	0.559	1.256
Story1	CM	X	0.119	0.04	2.97
Story1	CM	Y	0.124	0.088	1.413
Story3	Design 1	X	1.271	1.072	1.186
Story3	Design 1	Y	0.835	0.711	1.175
Story2	Design 1	X	0.614	0.177	3.476
Story2	Design 1	Y	0.982	0.782	1.256
Story1	Design 1	X	0.167	0.056	2.97
Story1	Design 1	Y	0.174	0.123	1.413
Story3	Design 2	X	1.366	1.176	1.161
Story3	Design 2	Y	1.001	0.882	1.134
Story2	Design 2	X	0.677	0.196	3.451
Story2	Design 2	Y	1.057	0.837	1.263
Story1	Design 2	X	0.184	0.062	2.961
Story1	Design 2	Y	0.187	0.131	1.427
Story3	Design 3 Max	X	62.941	53.401	1.179
Story3	Design 3 Max	Y	19.865	16.076	1.236
Story2	Design 3 Max	X	55.486	44.184	1.256
Story2	Design 3 Max	Y	17.278	14.271	1.211
Story1	Design 3 Max	X	23.161	18.163	1.275
Story1	Design 3 Max	Y	7.307	6.022	1.214
Story3	Design 3 Min	X	65.465	55.561	1.178
Story3	Design 3 Min	Y	21.485	17.666	1.216
Story2	Design 3 Min	X	56.727	44.543	1.274

Story	Load Case/Combo	Direction	Maximum mm	Average mm	Ratio
Story2	Design 3 Min	Y	15.889	12.802	1.241
Story1	Design 3 Min	X	23.499	18.277	1.286
Story1	Design 3 Min	Y	7.148	5.821	1.228
Story3	Design 5 Max	X	20.912	19.115	1.094
Story3	Design 5 Max	Y	44.475	42.245	1.053
Story2	Design 5 Max	X	21.225	17.194	1.234
Story2	Design 5 Max	Y	36.422	34.715	1.049
Story1	Design 5 Max	X	8.981	7.17	1.253
Story1	Design 5 Max	Y	15.802	15.091	1.047
Story3	Design 5 Min	X	22.458	20.62	1.089
Story3	Design 5 Min	Y	45.228	43.079	1.05
Story2	Design 5 Min	X	22.014	17.696	1.244
Story2	Design 5 Min	Y	35.159	33.581	1.047
Story1	Design 5 Min	X	9.196	7.312	1.258
Story1	Design 5 Min	Y	15.578	14.901	1.045
Story3	Derivas 1 Max	X	319.752	271.325	1.178
Story3	Derivas 1 Max	Y	102.06	83.309	1.225
Story2	Derivas 1 Max	X	279.913	221.64	1.263
Story2	Derivas 1 Max	Y	82.881	68.051	1.218
Story1	Derivas 1 Max	X	116.481	91.043	1.279
Story1	Derivas 1 Max	Y	36.162	29.678	1.218
Story3	Derivas 1 Min	X	322.276	273.485	1.178
Story3	Derivas 1 Min	Y	103.848	84.983	1.222
Story2	Derivas 1 Min	X	281.154	221.999	1.266
Story2	Derivas 1 Min	Y	81.736	66.704	1.225
Story1	Derivas 1 Min	X	116.819	91.157	1.282
Story1	Derivas 1 Min	Y	36.022	29.487	1.222
Story3	Derivas 2 Max	X	106.943	98.027	1.091
Story3	Derivas 2 Max	Y	223.591	212.587	1.052
Story2	Derivas 2 Max	X	107.477	86.831	1.238
Story2	Derivas 2 Max	Y	179.931	171.616	1.048
Story1	Derivas 2 Max	X	45.273	36.092	1.254
Story1	Derivas 2 Max	Y	78.622	75.126	1.047
Story3	Derivas 2 Min	X	109.467	100.43	1.09
Story3	Derivas 2 Min	Y	224.922	214.032	1.051
Story2	Derivas 2 Min	X	108.718	87.621	1.241
Story2	Derivas 2 Min	Y	177.978	169.865	1.048
Story1	Derivas 2 Min	X	45.611	36.315	1.256
Story1	Derivas 2 Min	Y	78.277	74.832	1.046
Story3	Design 6 Max	X	63.386	53.792	1.178
Story3	Design 6 Max	Y	20.154	16.382	1.23
Story2	Design 6 Max	X	55.712	44.25	1.259
Story2	Design 6 Max	Y	16.933	13.963	1.213
Story1	Design 6 Max	X	23.223	18.184	1.277
Story1	Design 6 Max	Y	7.265	5.979	1.215
Story3	Design 6 Min	X	65.02	55.17	1.179
Story3	Design 6 Min	Y	21.128	17.326	1.219
Story2	Design 6 Min	X	56.501	44.477	1.27
Story2	Design 6 Min	Y	16.088	13.037	1.234
Story1	Design 6 Min	X	23.437	18.256	1.284
Story1	Design 6 Min	Y	7.172	5.854	1.225
Story3	Servicio	X	1.081	0.927	1.166
Story3	Servicio	Y	0.775	0.678	1.142
Story2	Servicio	X	0.533	0.154	3.456
Story2	Servicio	Y	0.836	0.663	1.262
Story1	Servicio	X	0.145	0.049	2.963
Story1	Servicio	Y	0.148	0.104	1.424
Story3	envolvente Max	X	63.386	53.792	1.178
Story3	envolvente Max	Y	44.475	42.245	1.053
Story2	envolvente	X	55.712	44.298	1.258

Story	Load Case/Combo	Direction	Maximum mm	Average mm	Ratio
	Max				
Story2	envolvente Max	Y	36.767	35.024	1.05
Story1	envolvente Max	X	23.223	18.194	1.276
Story1	envolvente Max	Y	15.862	15.143	1.048
Story3	envolvente Min	X	65.465	55.561	1.178
Story3	envolvente Min	Y	45.517	43.385	1.049
Story2	envolvente Min	X	56.727	44.59	1.272
Story2	envolvente Min	Y	35.159	33.581	1.047
Story1	envolvente Min	X	23.499	18.287	1.285
Story1	envolvente Min	Y	15.578	14.901	1.045
Story3	Design 4 Max	X	20.576	18.743	1.098
Story3	Design 4 Max	Y	44.186	41.939	1.054
Story2	Design 4 Max	X	20.999	17.05	1.232
Story2	Design 4 Max	Y	36.767	35.024	1.05
Story1	Design 4 Max	X	8.92	7.129	1.251
Story1	Design 4 Max	Y	15.862	15.143	1.048
Story3	Design 4 Min	X	22.903	21.047	1.088
Story3	Design 4 Min	Y	45.517	43.385	1.049
Story2	Design 4 Min	X	22.24	17.84	1.247
Story2	Design 4 Min	Y	34.814	33.273	1.046
Story1	Design 4 Min	X	9.257	7.352	1.259
Story1	Design 4 Min	Y	15.517	14.849	1.045
Story3	Derivas 3 Max	X	320.197	271.716	1.178
Story3	Derivas 3 Max	Y	102.417	83.649	1.224
Story2	Derivas 3 Max	X	280.139	221.706	1.264
Story2	Derivas 3 Max	Y	82.683	67.816	1.219
Story1	Derivas 3 Max	X	116.542	91.064	1.28
Story1	Derivas 3 Max	Y	36.138	29.645	1.219
Story3	Derivas 3 Min	X	321.831	273.094	1.178
Story3	Derivas 3 Min	Y	103.491	84.643	1.223
Story2	Derivas 3 Min	X	280.928	221.933	1.266
Story2	Derivas 3 Min	Y	81.935	66.939	1.224
Story1	Derivas 3 Min	X	116.757	91.136	1.281
Story1	Derivas 3 Min	Y	36.045	29.52	1.221
Story3	Derivas 4 Max	X	107.388	98.454	1.091
Story3	Derivas 4 Max	Y	223.88	212.893	1.052
Story2	Derivas 4 Max	X	107.703	86.975	1.238
Story2	Derivas 4 Max	Y	179.586	171.308	1.048
Story1	Derivas 4 Max	X	45.335	36.133	1.255
Story1	Derivas 4 Max	Y	78.561	75.074	1.046
Story3	Derivas 4 Min	X	109.022	100.003	1.09
Story3	Derivas 4 Min	Y	224.633	213.726	1.051
Story2	Derivas 4 Min	X	108.492	87.477	1.24
Story2	Derivas 4 Min	Y	178.323	170.173	1.048
Story1	Derivas 4 Min	X	45.55	36.275	1.256
Story1	Derivas 4 Min	Y	78.338	74.883	1.046

Table 5.5 - Story Drifts

Story	Load Case/Combo	Direction	Drift	Label	X m	Y m	Z m
Story3	Dead	X	4.3E-05	8	0	17.47	7.94
Story3	Dead	Y	8.9E-05	8	0	17.47	7.94
Story3	Live	X	7.2E-05	8	0	17.47	7.94
Story3	Live	Y	0.000114	8	0	17.47	7.94
Story3	AME EX Max	X	0.031889	16	8	4.68	7.94
Story3	AME EY Max	X	0.00458	8	0	17.47	7.94
Story3	AME EY Max	Y	0.016733	8	0	17.47	7.94
Story3	AME FY Max	X	0.00458	8	0	17.47	7.94
Story3	AME FY Max	Y	0.016733	8	0	17.47	7.94
Story3	AME FX Max	X	0.031889	16	8	4.68	7.94

Story	Load Case/Combo	Direction	Drift	Label	X m	Y m	Z m
Story3	SD	X	0.000266	8	0	17.47	7.94
Story3	SD	Y	0.000338	8	0	17.47	7.94
Story3	CM	X	0.000309	8	0	17.47	7.94
Story3	CM	Y	0.000428	8	0	17.47	7.94
Story3	Design 1	X	0.000433	8	0	17.47	7.94
Story3	Design 1	Y	0.000599	8	0	17.47	7.94
Story3	Design 2	X	0.000485	8	0	17.47	7.94
Story3	Design 2	Y	0.000695	8	0	17.47	7.94
Story3	Design 3 Max	X	0.006125	16	8	4.68	7.94
Story3	Design 3 Max	Y	0.001131	8	0	17.47	7.94
Story3	Design 3 Min	X	0.006795	16	8	4.68	7.94
Story3	Design 3 Min	Y	0.002385	8	0	17.47	7.94
Story3	Design 5 Max	X	0.002	8	0	17.47	7.94
Story3	Design 5 Max	Y	0.003188	8	0	17.47	7.94
Story3	Design 5 Min	X	0.002556	8	0	17.47	7.94
Story3	Design 5 Min	Y	0.003958	8	0	17.47	7.94
Story3	Derivas 1 Max	X	0.031964	16	8	4.68	7.94
Story3	Derivas 1 Max	Y	0.008162	8	0	17.47	7.94
Story3	Derivas 1 Min	X	0.032634	16	8	4.68	7.94
Story3	Derivas 1 Min	Y	0.009416	8	0	17.47	7.94
Story3	Derivas 2 Max	X	0.010949	8	0	17.47	7.94
Story3	Derivas 2 Max	Y	0.017237	8	0	17.47	7.94
Story3	Derivas 2 Min	X	0.011833	8	0	17.47	7.94
Story3	Derivas 2 Min	Y	0.01849	8	0	17.47	7.94
Story3	Design 6 Max	X	0.006241	16	8	4.68	7.94
Story3	Design 6 Max	Y	0.001373	8	0	17.47	7.94
Story3	Design 6 Min	X	0.006678	16	8	4.68	7.94
Story3	Design 6 Min	Y	0.002143	8	0	17.47	7.94
Story3	Servicio	X	0.000381	8	0	17.47	7.94
Story3	Servicio	Y	0.000541	8	0	17.47	7.94
Story3	envolvente Max	X	0.006241	16	8	4.68	7.94
Story3	envolvente Max	Y	0.003188	8	0	17.47	7.94
Story3	envolvente Min	X	0.006795	16	8	4.68	7.94
Story3	envolvente Min	Y	0.004199	8	0	17.47	7.94
Story3	Design 4 Max	X	0.001851	16	8	4.68	7.94
Story3	Design 4 Max	Y	0.002946	8	0	17.47	7.94
Story3	Design 4 Min	X	0.002721	8	0	17.47	7.94
Story3	Design 4 Min	Y	0.004199	8	0	17.47	7.94
Story3	Derivas 3 Max	X	0.03208	16	8	4.68	7.94
Story3	Derivas 3 Max	Y	0.008404	8	0	17.47	7.94
Story3	Derivas 3 Min	X	0.032517	16	8	4.68	7.94
Story3	Derivas 3 Min	Y	0.009174	8	0	17.47	7.94
Story3	Derivas 4 Max	X	0.011113	8	0	17.47	7.94
Story3	Derivas 4 Max	Y	0.017479	8	0	17.47	7.94
Story3	Derivas 4 Min	X	0.011669	8	0	17.47	7.94
Story3	Derivas 4 Min	Y	0.018248	8	0	17.47	7.94
Story2	Dead	X	1E-06	8	0	17.47	5.32
Story2	Dead	Y	6E-06	20	8	16.54	5.32
Story2	Live	X	2.6E-05	9	4	0	5.32
Story2	Live	Y	4.1E-05	8	0	17.47	5.32
Story2	AME EX Max	X	0.059214	9	4	0	5.32
Story2	AME EY Max	X	0.007053	8	0	17.47	5.32
Story2	AME EY Max	Y	0.035491	8	0	17.47	5.32
Story2	AME FY Max	X	0.007053	8	0	17.47	5.32
Story2	AME FY Max	Y	0.035491	8	0	17.47	5.32
Story2	AME FX Max	X	0.059214	9	4	0	5.32
Story2	SD	X	0.000118	9	4	0	5.32
Story2	SD	Y	0.000209	8	0	17.47	5.32
Story2	CM	X	0.000118	9	4	0	5.32
Story2	CM	Y	0.000214	8	0	17.47	5.32
Story2	Design 1	X	0.000165	9	4	0	5.32
Story2	Design 1	Y	0.0003	8	0	17.47	5.32
Story2	Design 2	X	0.000183	9	4	0	5.32
Story2	Design 2	Y	0.000322	8	0	17.47	5.32
Story2	Design 3 Max	X	0.012006	9	4	0	5.32
Story2	Design 3	Y	0.003708	8	0	17.47	5.32

Story	Load Case/Combo	Direction	Drift	Label	X m	Y m	Z m
	Max						
Story2	Design 3 Min	X	0.012341	9	4	0	5.32
Story2	Design 3 Min	Y	0.003254	17	8	8.93	5.32
Story2	Design 5 Max	X	0.004549	9	4	0	5.32
Story2	Design 5 Max	Y	0.007675	8	0	17.47	5.32
Story2	Design 5 Min	X	0.004762	9	4	0	5.32
Story2	Design 5 Min	Y	0.00729	8	0	17.47	5.32
Story2	Derivas 1 Max	X	0.060701	9	4	0	5.32
Story2	Derivas 1 Max	Y	0.017387	17	8	8.93	5.32
Story2	Derivas 1 Min	X	0.061036	9	4	0	5.32
Story2	Derivas 1 Min	Y	0.017015	20	8	16.54	5.32
Story2	Derivas 2 Max	X	0.023112	9	4	0	5.32
Story2	Derivas 2 Max	Y	0.03771	8	0	17.47	5.32
Story2	Derivas 2 Min	X	0.023446	9	4	0	5.32
Story2	Derivas 2 Min	Y	0.037114	8	0	17.47	5.32
Story2	Design 6 Max	X	0.012067	9	4	0	5.32
Story2	Design 6 Max	Y	0.003603	7	0	14.9	5.32
Story2	Design 6 Min	X	0.01228	9	4	0	5.32
Story2	Design 6 Min	Y	0.003319	17	8	8.93	5.32
Story2	Servicio	X	0.000144	9	4	0	5.32
Story2	Servicio	Y	0.000255	8	0	17.47	5.32
Story2	envolvente Max	X	0.012067	9	4	0	5.32
Story2	envolvente Max	Y	0.00778	8	0	17.47	5.32
Story2	envolvente Min	X	0.012341	9	4	0	5.32
Story2	envolvente Min	Y	0.00729	8	0	17.47	5.32
Story2	Design 4 Max	X	0.004488	9	4	0	5.32
Story2	Design 4 Max	Y	0.00778	8	0	17.47	5.32
Story2	Design 4 Min	X	0.004823	9	4	0	5.32
Story2	Design 4 Min	Y	0.007185	8	0	17.47	5.32
Story2	Derivas 3 Max	X	0.060762	9	4	0	5.32
Story2	Derivas 3 Max	Y	0.017322	17	8	8.93	5.32
Story2	Derivas 3 Min	X	0.060975	9	4	0	5.32
Story2	Derivas 3 Min	Y	0.017079	17	8	8.93	5.32
Story2	Derivas 4 Max	X	0.023173	9	4	0	5.32
Story2	Derivas 4 Max	Y	0.037605	8	0	17.47	5.32
Story2	Derivas 4 Min	X	0.023385	9	4	0	5.32
Story2	Derivas 4 Min	Y	0.03722	8	0	17.47	5.32
Story1	Dead	Y	2E-06	20	8	16.54	2.62
Story1	Live	X	1E-05	9	4	0	2.62
Story1	Live	Y	9E-06	8	0	17.47	2.62
Story1	AME EX Max	X	0.043208	9	4	0	2.62
Story1	AME EX Max	Y	0.006011	15	8	0.68	2.62
Story1	AME EY Max	X	0.00523	8	0	17.47	2.62
Story1	AME EY Max	Y	0.028415	8	0	17.47	2.62
Story1	AME FY Max	X	0.00523	8	0	17.47	2.62
Story1	AME FY Max	Y	0.028415	8	0	17.47	2.62
Story1	AME FX Max	X	0.043208	9	4	0	2.62
Story1	AME FX Max	Y	0.006011	15	8	0.68	2.62
Story1	SD	X	4.5E-05	9	4	0	2.62
Story1	SD	Y	4.5E-05	8	0	17.47	2.62
Story1	CM	X	4.6E-05	9	4	0	2.62
Story1	CM	Y	4.7E-05	8	0	17.47	2.62
Story1	Design 1	X	6.4E-05	9	4	0	2.62
Story1	Design 1	Y	6.6E-05	8	0	17.47	2.62
Story1	Design 2	X	7E-05	9	4	0	2.62
Story1	Design 2	Y	7.1E-05	8	0	17.47	2.62
Story1	Design 3 Max	X	0.00884	9	4	0	2.62
Story1	Design 3 Max	Y	0.002789	8	0	17.47	2.62
Story1	Design 3 Min	X	0.008969	9	4	0	2.62
Story1	Design 3 Min	Y	0.002728	15	8	0.68	2.62
Story1	Design 5 Max	X	0.003428	9	4	0	2.62
Story1	Design 5 Max	Y	0.006031	8	0	17.47	2.62
Story1	Design 5	X	0.00351	9	4	0	2.62

Story	Load Case/Combo	Direction	Drift	Label	X m	Y m	Z m
Min							
Story1	Design 5 Min	Y	0.005946	8	0	17.47	2.62
Story1	Derivas 1 Max	X	0.044458	9	4	0	2.62
Story1	Derivas 1 Max	Y	0.013802	16	8	4.68	2.62
Story1	Derivas 1 Min	X	0.044587	9	4	0	2.62
Story1	Derivas 1 Min	Y	0.013749	16	8	4.68	2.62
Story1	Derivas 2 Max	X	0.01728	9	4	0	2.62
Story1	Derivas 2 Max	Y	0.030009	8	0	17.47	2.62
Story1	Derivas 2 Min	X	0.017409	9	4	0	2.62
Story1	Derivas 2 Min	Y	0.029877	8	0	17.47	2.62
Story1	Design 6 Max	X	0.008864	9	4	0	2.62
Story1	Design 6 Max	Y	0.002773	20	8	16.54	2.62
Story1	Design 6 Min	X	0.008946	9	4	0	2.62
Story1	Design 6 Min	Y	0.002737	15	8	0.68	2.62
Story1	Servicio	X	5.5E-05	9	4	0	2.62
Story1	Servicio	Y	5.6E-05	8	0	17.47	2.62
Story1	envolvente Max	X	0.008864	9	4	0	2.62
Story1	envolvente Max	Y	0.006054	8	0	17.47	2.62
Story1	envolvente Min	X	0.008969	9	4	0	2.62
Story1	envolvente Min	Y	0.005946	8	0	17.47	2.62
Story1	Design 4 Max	X	0.003404	9	4	0	2.62
Story1	Design 4 Max	Y	0.006054	8	0	17.47	2.62
Story1	Design 4 Min	X	0.003533	9	4	0	2.62
Story1	Design 4 Min	Y	0.005923	8	0	17.47	2.62
Story1	Derivas 3 Max	X	0.044482	9	4	0	2.62
Story1	Derivas 3 Max	Y	0.013793	20	8	16.54	2.62
Story1	Derivas 3 Min	X	0.044564	9	4	0	2.62
Story1	Derivas 3 Min	Y	0.013758	15	8	0.68	2.62
Story1	Derivas 4 Max	X	0.017303	9	4	0	2.62
Story1	Derivas 4 Max	Y	0.029985	8	0	17.47	2.62
Story1	Derivas 4 Min	X	0.017385	9	4	0	2.62
Story1	Derivas 4 Min	Y	0.0299	8	0	17.47	2.62

Table 5.6 - Story Forces

Story	Load Case/Combo	Location	P kN	VX kN	VY kN	T kN-m	MX kN-m	MY kN-m
Story3	Dead	Top	33.2699	0	0	0	355.4152	-130.7483
Story3	Dead	Bottom	62.175	0	0	0	687.8624	-254.0767
Story3	Live	Top	49.3	0	0	0	534.6817	-194.7203
Story3	Live	Bottom	49.3	0	0	0	534.6817	-194.7203
Story3	AME EX Max	Top	0.6681	169.0339	7.0484	1666.028	5.9359	2.4587
Story3	AME EX Max	Bottom	0.6681	169.0339	7.0484	1666.028	22.2643	442.98
Story3	AME EY Max	Top	11.0745	11.5207	147.961	543.6354	98.6157	44.2653
Story3	AME EY Max	Bottom	11.0745	11.5207	147.961	543.6354	385.0466	44.2732
Story3	AME FY Max	Top	11.0745	11.5207	147.961	543.6354	98.6157	44.2653
Story3	AME FY Max	Bottom	11.0745	11.5207	147.961	543.6354	385.0466	44.2732
Story3	AME FX Max	Top	0.6681	169.0339	7.0484	1666.028	5.9359	2.4587
Story3	AME FX Max	Bottom	0.6681	169.0339	7.0484	1666.028	22.2643	442.98
Story3	SD	Top	39.44	0	0	0	427.7454	-155.7762
Story3	SD	Bottom	39.44	0	0	0	427.7454	-155.7762
Story3	CM	Top	72.7099	0	0	0	783.1606	-286.5245
Story3	CM	Bottom	101.615	0	0	0	1115.6078	-409.853
Story3	Design 1	Top	101.7938	0	0	0	1096.4248	-401.1343
Story3	Design 1	Bottom	142.261	0	0	0	1561.8509	-573.7941
Story3	Design 2	Top	166.1319	0	0	0	1795.2834	-655.3819
Story3	Design 2	Bottom	200.818	0	0	0	2194.2201	-803.376
Story3	Design 3 Max	Top	137.35	34.498	10.2873	365.8237	1481.5785	-535.402
Story3	Design 3 Max	Bottom	172.0361	34.498	10.2873	365.8237	1900.9667	-595.2914
Story3	Design 3 Min	Top	135.7538	-34.498	-10.2873	-365.8237	1467.3703	-541.6974
Story3	Design 3 Min	Bottom	170.4399	-34.498	-10.2873	-365.8237	1845.8554	-777.7962
Story3	Design 5 Max	Top	67.6939	12.4462	30.0151	208.6888	724.9238	-248.8715
Story3	Design 5 Max	Bottom	93.7085	12.4462	30.0151	208.6888	1082.3922	-333.4342
Story3	Design 5 Min	Top	63.1839	-12.4462	-30.0151	-208.6888	684.7652	-266.8727
Story3	Design 5 Min	Bottom	89.1985	-12.4462	-30.0151	-208.6888	925.7018	-404.3011

Story	Load Case/Combo	Location	P kN	VX kN	VY kN	T kN-m	MX kN-m	MY kN-m
Story3	Derivas 1 Max	Top	140.5423	172.4901	51.4367	1829.1186	1509.995	-522.8114
Story3	Derivas 1 Max	Bottom	175.2284	172.4901	51.4367	1829.1186	2011.1893	-230.2818
Story3	Derivas 1 Min	Top	132.5614	-172.4901	-51.4367	-1829.1186	1438.9538	-554.288
Story3	Derivas 1 Min	Bottom	167.2475	-172.4901	-51.4367	-1829.1186	1735.6328	-1142.8058
Story3	Derivas 2 Max	Top	147.8268	62.2309	150.0756	1043.4438	1574.8709	-493.5468
Story3	Derivas 2 Max	Bottom	182.513	62.2309	150.0756	1043.4438	2265.137	-509.3766
Story3	Derivas 2 Min	Top	125.2769	-62.2309	-150.0756	-1043.4438	1374.0779	-583.5526
Story3	Derivas 2 Min	Bottom	159.963	-62.2309	-150.0756	-1043.4438	1481.6851	-863.711
Story3	Design 6 Max	Top	66.237	34.498	10.2873	365.8237	711.9486	-254.7244
Story3	Design 6 Max	Bottom	92.2516	34.498	10.2873	365.8237	1031.6027	-277.6153
Story3	Design 6 Min	Top	64.6408	-34.498	-10.2873	-365.8237	697.7404	-261.0197
Story3	Design 6 Min	Bottom	90.6554	-34.498	-10.2873	-365.8237	976.4914	-460.1201
Story3	Servicio	Top	122.0099	0	0	0	1317.8423	-481.2448
Story3	Servicio	Bottom	150.915	0	0	0	1650.2895	-604.5732
Story3	envolvente Max	Top	166.1319	34.498	30.0151	365.8237	1795.2834	-248.8715
Story3	envolvente Max	Bottom	200.818	34.498	30.0151	365.8237	2194.2201	-277.6153
Story3	envolvente Min	Top	63.1839	-34.498	-30.0151	-365.8237	684.7652	-655.3819
Story3	envolvente Min	Bottom	89.1985	-34.498	-30.0151	-365.8237	925.7018	-803.376
Story3	Design 4 Max	Top	138.8069	12.4462	30.0151	208.6888	1494.5537	-529.5491
Story3	Design 4 Max	Bottom	173.493	12.4462	30.0151	208.6888	1951.7562	-651.1104
Story3	Design 4 Min	Top	134.2969	-12.4462	-30.0151	-208.6888	1454.3951	-547.5503
Story3	Design 4 Min	Bottom	168.983	-12.4462	-30.0151	-208.6888	1795.0659	-721.9773
Story3	Derivas 3 Max	Top	69.4294	172.4901	51.4367	1829.1186	740.3651	-242.1338
Story3	Derivas 3 Max	Bottom	95.4439	172.4901	51.4367	1829.1186	1141.8253	87.3943
Story3	Derivas 3 Min	Top	61.4484	-172.4901	-51.4367	-1829.1186	669.3239	-273.6103
Story3	Derivas 3 Min	Bottom	87.463	-172.4901	-51.4367	-1829.1186	866.2687	-825.1297
Story3	Derivas 4 Max	Top	76.7139	62.2309	150.0756	1043.4438	805.241	-212.8692
Story3	Derivas 4 Max	Bottom	102.7285	62.2309	150.0756	1043.4438	1395.7729	-191.7004
Story3	Derivas 4 Min	Top	54.1639	-62.2309	-150.0756	-1043.4438	604.4481	-302.875
Story3	Derivas 4 Min	Bottom	80.1785	-62.2309	-150.0756	-1043.4438	612.3211	-546.0349
Story2	Dead	Top	169.9455	0	0	0	1671.3665	-680.7801
Story2	Dead	Bottom	237.4642	0	0	0	2326.1399	-950.8553
Story2	Live	Top	289.042	0	0	0	2616.5981	-1145.4803
Story2	Live	Bottom	289.042	0	0	0	2616.5981	-1145.4803
Story2	AME EX Max	Top	0.7854	1567.7253	42.4442	12529.961	22.9147	450.1023
Story2	AME EX Max	Bottom	0.7854	1567.7253	42.4442	12529.961	119.8003	4579.8353
Story2	AME EY Max	Top	16.9963	46.3747	1620.5508	5922.192	350.0298	62.254
Story2	AME EY Max	Bottom	16.9963	46.3747	1620.5508	5922.192	4661.6071	150.2057
Story2	AME FY Max	Top	16.9963	46.3747	1620.5508	5922.192	350.0298	62.254
Story2	AME FY Max	Bottom	16.9963	46.3747	1620.5508	5922.192	4661.6071	150.2057
Story2	AME FX Max	Top	0.7854	1567.7253	42.4442	12529.961	22.9147	450.1023
Story2	AME FX Max	Bottom	0.7854	1567.7253	42.4442	12529.961	119.8003	4579.8353
Story2	SD	Top	1152.9084	0	0	0	10097.0906	-4571.5282
Story2	SD	Bottom	1152.9084	0	0	0	10097.0906	-4571.5282
Story2	CM	Top	1322.8539	0	0	0	11768.4571	-5252.3083
Story2	CM	Bottom	1390.3726	0	0	0	12423.2305	-5522.3835
Story2	Design 1	Top	1851.9954	0	0	0	16475.84	-7353.2316
Story2	Design 1	Bottom	1946.5217	0	0	0	17392.5227	-7731.3369
Story2	Design 2	Top	2049.8918	0	0	0	18308.7056	-8135.5384
Story2	Design 2	Bottom	2130.9144	0	0	0	19094.4336	-8459.6286
Story2	Design 3 Max	Top	1877.6435	316.3275	105.7219	2861.3237	16764.3314	-7354.4946
Story2	Design 3 Max	Bottom	1958.666	316.3275	105.7219	2861.3237	17828.1312	-6847.361
Story2	Design 3 Min	Top	1875.2898	-316.3275	-105.7219	-2861.3237	16713.162	-7542.0059
Story2	Design 3 Min	Bottom	1956.3123	-316.3275	-105.7219	-2861.3237	17220.8183	-8697.3198
Story2	Design 5 Max	Top	1194.0148	103.3385	326.6568	1936.2361	10662.9923	-4687.6206
Story2	Design 5 Max	Bottom	1254.7818	103.3385	326.6568	1936.2361	12120.4169	-4665.3139
Story2	Design 5 Min	Top	1187.1221	-103.3385	-326.6568	-1936.2361	10520.2306	-4766.5344
Story2	Design 5 Min	Bottom	1247.889	-103.3385	-326.6568	-1936.2361	10241.398	-5274.9764
Story2	Derivas 1 Max	Top	1882.3509	1581.6377	528.6095	14306.6186	16866.6704	-6979.4718
Story2	Derivas 1 Max	Bottom	1963.3735	1581.6377	528.6095	14306.6186	19042.7571	-3147.4434
Story2	Derivas 1 Min	Top	1870.5823	-1581.6377	-528.6095	-14306.6186	16610.8231	-7917.0287
Story2	Derivas 1 Min	Bottom	1951.6049	-1581.6377	-528.6095	-14306.6186	16006.1924	-12397.2374
Story2	Derivas 2	Top	1893.6985	516.6923	1633.2841	9681.1803	17095.651	-7250.9656

Story	Load Case/Combo	Location	P kN	VX kN	VY kN	T kN-m	MX kN-m	MY kN-m
	Max							
Story2	Derivas 2 Max	Bottom	1974.7211	516.6923	1633.2841	9681.1803	22222.0219	-6248.1841
Story2	Derivas 2 Min	Top	1859.2347	-516.6923	-1633.2841	-9681.1803	16381.8425	-7645.5349
Story2	Derivas 2 Min	Bottom	1940.2573	-516.6923	-1633.2841	-9681.1803	12826.9276	-9296.4968
Story2	Design 6 Max	Top	1191.7453	316.3275	105.7219	2861.3237	10617.1962	-4633.3218
Story2	Design 6 Max	Bottom	1252.5122	316.3275	105.7219	2861.3237	11484.5639	-4045.1657
Story2	Design 6 Min	Top	1189.3916	-316.3275	-105.7219	-2861.3237	10566.0267	-4820.8332
Story2	Design 6 Min	Bottom	1250.1585	-316.3275	-105.7219	-2861.3237	10877.251	-5895.1245
Story2	Servicio	Top	1611.8959	0	0	0	14385.0553	-6397.7886
Story2	Servicio	Bottom	1679.4146	0	0	0	15039.8287	-6667.8637
Story2	envolvente Max	Top	2049.8918	316.3275	326.6568	2861.3237	18308.7056	-4633.3218
Story2	envolvente Max	Bottom	2130.9144	316.3275	326.6568	2861.3237	19094.4336	-4045.1657
Story2	envolvente Min	Top	1187.1221	-316.3275	-326.6568	-2861.3237	10520.2306	-8135.5384
Story2	envolvente Min	Bottom	1247.889	-316.3275	-326.6568	-2861.3237	10241.398	-8697.3198
Story2	Design 4 Max	Top	1879.913	103.3385	326.6568	1936.2361	16810.1276	-7408.7933
Story2	Design 4 Max	Bottom	1960.9355	103.3385	326.6568	1936.2361	18463.9842	-7467.5092
Story2	Design 4 Min	Top	1873.0202	-103.3385	-326.6568	-1936.2361	16667.3659	-7487.7072
Story2	Design 4 Min	Bottom	1954.0428	-103.3385	-326.6568	-1936.2361	16584.9653	-8077.1717
Story2	Derivas 3 Max	Top	1196.4528	1581.6377	528.6095	14306.6186	10719.5351	-4258.299
Story2	Derivas 3 Max	Bottom	1257.2197	1581.6377	528.6095	14306.6186	12699.1898	-345.2481
Story2	Derivas 3 Min	Top	1184.6842	-1581.6377	-528.6095	-14306.6186	10463.6878	-5195.8559
Story2	Derivas 3 Min	Bottom	1245.4511	-1581.6377	-528.6095	-14306.6186	9662.6251	-9595.0421
Story2	Derivas 4 Max	Top	1207.8004	516.6923	1633.2841	9681.1803	10948.5157	-4529.7928
Story2	Derivas 4 Max	Bottom	1268.5673	516.6923	1633.2841	9681.1803	15878.4546	-3445.9888
Story2	Derivas 4 Min	Top	1173.3366	-516.6923	-1633.2841	-9681.1803	10234.7072	-4924.3622
Story2	Derivas 4 Min	Bottom	1234.1035	-516.6923	-1633.2841	-9681.1803	6483.3603	-6494.3014
Story1	Dead	Top	344.6463	0	0	0	3304.3895	-1375.205
Story1	Dead	Bottom	414.0185	0	0	0	3974.1785	-1652.694
Story1	Live	Top	528.784	0	0	0	4698.5146	-2096.2403
Story1	Live	Bottom	528.784	0	0	0	4698.5146	-2096.2403
Story1	AME EX Max	Top	0.884	2175.7153	59.3672	17275.9802	119.3663	4584.4118
Story1	AME EX Max	Bottom	0.884	2175.7153	59.3672	17275.9802	268.7833	10184.6143
Story1	AME EY Max	Top	17.2474	59.3672	2290.2206	8395.3206	4658.8558	150.418
Story1	AME EY Max	Bottom	17.2474	59.3672	2290.2206	8395.3206	10530.5748	295.2689
Story1	AME FY Max	Top	17.2474	59.3672	2290.2206	8395.3206	4658.8558	150.418
Story1	AME FY Max	Bottom	17.2474	59.3672	2290.2206	8395.3206	10530.5748	295.2689
Story1	AME FX Max	Top	0.884	2175.7153	59.3672	17275.9802	119.3663	4584.4118
Story1	AME FX Max	Bottom	0.884	2175.7153	59.3672	17275.9802	268.7833	10184.6143
Story1	SD	Top	2266.3768	0	0	0	19766.4359	-8987.2802
Story1	SD	Bottom	2266.3768	0	0	0	19766.4359	-8987.2802
Story1	CM	Top	2611.0231	0	0	0	23070.8255	-10362.4852
Story1	CM	Bottom	2680.3953	0	0	0	23740.6145	-10639.9742
Story1	Design 1	Top	3655.4323	0	0	0	32299.1556	-14507.4793
Story1	Design 1	Bottom	3752.5535	0	0	0	33236.8603	-14895.9639
Story1	Design 2	Top	3979.2821	0	0	0	35202.6139	-15788.9667
Story1	Design 2	Bottom	4062.5288	0	0	0	36006.3607	-16121.9535
Story1	Design 3 Max	Top	3663.2234	438.7051	149.2867	3958.9153	32686.9098	-13605.3151
Story1	Design 3 Max	Bottom	3746.4701	438.7051	149.2867	3958.9153	33872.8431	-12809.5703
Story1	Design 3 Min	Top	3660.8001	-438.7051	-149.2867	-3958.9153	32080.1005	-15457.13
Story1	Design 3 Min	Bottom	3744.0468	-438.7051	-149.2867	-3958.9153	32501.6608	-16918.8483
Story1	Design 5 Max	Top	2353.4233	142.4164	461.6062	2715.6229	21702.676	-9021.0884
Story1	Design 5 Max	Bottom	2415.8583	142.4164	461.6062	2715.6229	23488.795	-8905.8462
Story1	Design 5 Min	Top	2346.4183	-142.4164	-461.6062	-2715.6229	19824.8098	-9631.385
Story1	Design 5 Min	Bottom	2408.8533	-142.4164	-461.6062	-2715.6229	19244.3111	-10246.1074
Story1	Derivas 1 Max	Top	3668.0699	2193.5255	746.4334	19794.5764	33900.5282	-9901.6853
Story1	Derivas 1 Max	Bottom	3751.3166	2193.5255	746.4334	19794.5764	36615.2078	-4591.0143
Story1	Derivas 1 Min	Top	3655.9535	-2193.5255	-746.4334	-19794.5764	30866.4821	-19160.7598
Story1	Derivas 1 Min	Bottom	3739.2002	-2193.5255	-746.4334	-19794.5764	29759.2962	-25137.4043
Story1	Derivas 2 Max	Top	3679.5243	712.0818	2308.0308	13578.1146	37078.1708	-13005.481
Story1	Derivas 2 Max	Bottom	3762.771	712.0818	2308.0308	13578.1146	43798.4618	-11513.5562
Story1	Derivas 2 Min	Top	3644.4991	-712.0818	-2308.0308	-13578.1146	27688.8395	-16056.9641
Story1	Derivas 2 Min	Bottom	3727.7458	-712.0818	-2308.0308	-13578.1146	22576.0421	-18214.8625
Story1	Design 6 Max	Top	2351.1324	438.7051	149.2867	3958.9153	21067.1475	-8400.3293

Story	Load Case/Combo	Location	P kN	VX kN	VY kN	T kN-m	MX kN-m	MY kN-m
Story1	Design 6 Max	Bottom	2413.5675	438.7051	149.2867	3958.9153	22052.1442	-7521.3378
Story1	Design 6 Min	Top	2348.7092	-438.7051	-149.2867	-3958.9153	20460.3383	-10252.1442
Story1	Design 6 Min	Bottom	2411.1442	-438.7051	-149.2867	-3958.9153	20680.9619	-11630.6158
Story1	Servicio	Top	3139.8071	0	0	0	27769.3401	-12458.7255
Story1	Servicio	Bottom	3209.1793	0	0	0	28439.1291	-12736.2145
Story1	envolvente Max	Top	3979.2821	438.7051	461.6062	3958.9153	35202.6139	-8400.3293
Story1	envolvente Max	Bottom	4062.5288	438.7051	461.6062	3958.9153	36006.3607	-7521.3378
Story1	envolvente Min	Top	2346.4183	-438.7051	-461.6062	-3958.9153	19824.8098	-15788.9667
Story1	envolvente Min	Bottom	2408.8533	-438.7051	-461.6062	-3958.9153	19244.3111	-16918.8483
Story1	Design 4 Max	Top	3665.5142	142.4164	461.6062	2715.6229	33322.4383	-14226.0742
Story1	Design 4 Max	Bottom	3748.7609	142.4164	461.6062	2715.6229	35309.4939	-14194.0787
Story1	Design 4 Min	Top	3658.5092	-142.4164	-461.6062	-2715.6229	31444.572	-14836.3709
Story1	Design 4 Min	Bottom	3741.7559	-142.4164	-461.6062	-2715.6229	31065.01	-15534.34
Story1	Derivas 3 Max	Top	2355.979	2193.5255	746.4334	19794.5764	22280.7659	-4696.6995
Story1	Derivas 3 Max	Bottom	2418.414	2193.5255	746.4334	19794.5764	24794.5088	697.2182
Story1	Derivas 3 Min	Top	2343.8626	-2193.5255	-746.4334	-19794.5764	19246.7199	-13955.7739
Story1	Derivas 3 Min	Bottom	2406.2976	-2193.5255	-746.4334	-19794.5764	17938.5972	-19849.1718
Story1	Derivas 4 Max	Top	2367.4334	712.0818	2308.0308	13578.1146	25458.4086	-7800.4951
Story1	Derivas 4 Max	Bottom	2429.8684	712.0818	2308.0308	13578.1146	31977.7629	-6225.3236
Story1	Derivas 4 Min	Top	2332.4082	-712.0818	-2308.0308	-13578.1146	16069.0773	-10851.9783
Story1	Derivas 4 Min	Bottom	2394.8432	-712.0818	-2308.0308	-13578.1146	10755.3432	-12926.6299

5.3 Point Results

Table 5.7 - Joint Reactions

Story	Joint Label	Unique Name	Load Case/Combo	FX kN	FY kN	FZ kN	MX kN-m	MY kN-m	MZ kN-m
Base	1	1	Dead	0.2753	0.215	16.4845	-0.1771	0.2376	-0.0001
Base	1	1	Live	0.0282	0.6139	15.0079	-0.4924	0.062	0.0028
Base	1	1	AME EX Max	148.5828	25.4031	151.1526	42.421	299.1463	5.1581
Base	1	1	AME EY Max	18.0043	108.1651	78.8144	207.9532	31.6244	2.0509
Base	1	1	AME FY Max	18.0043	108.1651	78.8144	207.9532	31.6244	2.0509
Base	1	1	AME FX Max	148.5828	25.4031	151.1526	42.421	299.1463	5.1581
Base	1	1	SD	0.1334	2.9293	69.3583	-2.3416	0.2893	0.013
Base	1	1	CM	0.4087	3.1443	85.8427	-2.5187	0.527	0.0129
Base	1	1	Design 1	0.5722	4.4021	120.1798	-3.5261	0.7377	0.0181
Base	1	1	Design 2	0.5355	4.7555	127.0239	-3.8102	0.7316	0.0199
Base	1	1	Design 3 Max	31.3154	15.9576	152.9786	17.4466	62.4211	1.1729
Base	1	1	Design 3 Min	-30.2782	-7.1834	83.0598	-24.4762	-61.0323	-1.1364
Base	1	1	Design 5 Max	12.8836	25.9871	102.0905	41.8691	24.7479	0.7313
Base	1	1	Design 5 Min	-12.148	-20.3273	52.4264	-46.4027	-23.7994	-0.7081
Base	1	1	Derivas 1 Max	154.5027	62.2397	292.8161	101.2921	309.328	5.7916
Base	1	1	Derivas 1 Min	-153.4655	-53.4655	-56.7777	-108.3217	-307.9392	-5.7551
Base	1	1	Derivas 2 Max	63.0977	120.1732	242.1793	217.1647	122.0626	3.6166
Base	1	1	Derivas 2 Min	-62.0605	-111.3989	-6.141	-224.1942	-120.6739	-3.5801
Base	1	1	Design 6 Max	31.1646	14.4004	112.2178	18.6946	62.201	1.1663
Base	1	1	Design 6 Min	-30.429	-8.7406	42.2991	-23.2282	-61.2525	-1.1431
Base	1	1	Servicio	0.4369	3.7583	100.8506	-3.011	0.589	0.0157
Base	1	1	envolvente Max	31.3154	27.5443	152.9786	41.8691	62.4211	1.1729
Base	1	1	envolvente Min	-30.429	-20.3273	42.2991	-47.6507	-61.2525	-1.1431
Base	1	1	Design 4 Max	13.0344	27.5443	142.8512	40.6211	24.968	0.7379
Base	1	1	Design 4 Min	-11.9972	-18.7701	93.1872	-47.6507	-23.5793	-0.7014
Base	1	1	Derivas 3 Max	154.3519	60.6825	252.0554	102.5401	309.1079	5.785
Base	1	1	Derivas 3 Min	-153.6163	-55.0227	-97.5384	-107.0737	-308.1593	-5.7618
Base	1	1	Derivas 4 Max	62.947	118.6159	201.4186	218.4127	121.8425	3.61
Base	1	1	Derivas 4 Min	-62.2113	-112.9561	-46.9017	-222.9463	-120.894	-3.5868
Base	2	14	Dead	0.2733	0.0511	25.5625	-0.0358	0.2362	-0.0001
Base	2	14	Live	0.9964	0.1297	34.3289	-0.075	0.8845	0.0028
Base	2	14	AME EX Max	130.6723	23.3664	156.4716	40.7172	263.7561	5.1581
Base	2	14	AME EY Max	7.113	129.3446	19.9597	226.3005	13.4698	2.0509
Base	2	14	AME FY Max	7.113	129.3446	19.9597	226.3005	13.4698	2.0509
Base	2	14	AME FX Max	130.6723	23.3664	156.4716	40.7172	263.7561	5.1581
Base	2	14	SD	4.6139	0.3131	143.6344	-0.0867	4.0948	0.013
Base	2	14	CM	4.8873	0.3642	169.1969	-0.1225	4.331	0.0129

Story	Joint Label	Unique Name	Load Case/Com bo	FX kN	FY kN	FZ kN	MX kN-m	MY kN-m	MZ kN-m
Base	2	14	Design 1	6.8422	0.5099	236.8756	-0.1715	6.0634	0.0181
Base	2	14	Design 2	7.4589	0.6446	257.9625	-0.2671	6.6124	0.0199
Base	2	14	Design 3 Max	33.4223	13.0007	269.857	21.4994	59.6411	1.1729
Base	2	14	Design 3 Min	-19.7002	-11.8672	204.8732	-21.9435	-47.4777	-1.1364
Base	2	14	Design 5 Max	13.6615	27.5987	165.6574	47.5928	22.4172	0.7313
Base	2	14	Design 5 Min	-4.8644	-26.9431	138.8969	-47.8134	-14.6214	-0.7081
Base	2	14	Derivas 1 Max	139.6673	62.7366	399.8247	108.3852	273.8787	5.7916
Base	2	14	Derivas 1 Min	-125.9451	-61.6031	74.9056	-108.8294	-261.7153	-5.7551
Base	2	14	Derivas 2 Max	53.1758	136.9213	304.2663	238.2936	98.6783	3.6166
Base	2	14	Derivas 2 Min	-39.4536	-135.7878	170.464	-238.7377	-86.5149	-3.5801
Base	2	14	Design 6 Max	30.9598	12.7617	184.7691	21.6112	57.4573	1.1663
Base	2	14	Design 6 Min	-22.1627	-12.1062	119.7853	-21.8317	-49.6615	-1.1431
Base	2	14	Servicio	5.8836	0.4939	203.5258	-0.1976	5.2155	0.0157
Base	2	14	envolvente Max	33.4223	27.8376	269.857	47.5928	59.6411	1.1729
Base	2	14	envolvente Min	-22.1627	-26.9431	119.7853	-47.9252	-49.6615	-1.1431
Base	2	14	Design 4 Max	16.124	27.8376	250.7454	47.4811	24.601	0.7379
Base	2	14	Design 4 Min	-2.4019	-26.7042	223.9849	-47.9252	-12.4376	-0.7014
Base	2	14	Derivas 3 Max	137.2047	62.4976	314.7367	108.497	271.6949	5.785
Base	2	14	Derivas 3 Min	-128.4077	-61.842	-10.1823	-108.7176	-263.8991	-5.7618
Base	2	14	Derivas 4 Max	50.7133	136.6823	219.1783	238.4054	96.4945	3.61
Base	2	14	Derivas 4 Min	-41.9162	-136.0267	85.376	-238.6259	-88.6987	-3.5868
Base	5	19	Dead	0.0116	-0.1439	28.1375	0.1322	0.0108	-0.0001
Base	5	19	Live	0.0923	-0.3906	38.1647	0.3734	0.0926	0.0028
Base	5	19	AME EX Max	111.3031	24.4879	82.9006	41.6867	226.672	5.1581
Base	5	19	AME EY Max	1.8188	135.0413	81.9008	231.2344	3.7856	2.0509
Base	5	19	AME FY Max	1.8188	135.0413	81.9008	231.2344	3.7856	2.0509
Base	5	19	AME FX Max	111.3031	24.4879	82.9006	41.6867	226.672	5.1581
Base	5	19	SD	0.2668	-1.6489	150.9982	1.6043	0.2884	0.013
Base	5	19	CM	0.2784	-1.7927	179.1357	1.7365	0.2992	0.0129
Base	5	19	Design 1	0.3897	-2.5098	250.7899	2.4311	0.4189	0.0181
Base	5	19	Design 2	0.4817	-2.7762	276.0264	2.6812	0.5072	0.0199
Base	5	19	Design 3 Max	22.7961	10.4582	274.6217	24.6686	46.0132	1.1729
Base	5	19	Design 3 Min	-21.9434	-15.5419	231.6334	-19.7542	-45.1099	-1.1364
Base	5	19	Design 5 Max	7.2925	26.8641	182.5763	50.3109	14.6267	0.7313
Base	5	19	Design 5 Min	-6.7914	-30.091	139.8679	-47.1852	-14.0881	-0.7081
Base	5	19	Derivas 1 Max	112.2751	62.4584	360.5983	113.5142	228.2593	5.7916
Base	5	19	Derivas 1 Min	-111.4224	-67.5421	145.6567	-108.5998	-227.3561	-5.7551
Base	5	19	Derivas 2 Max	35.6361	139.8458	359.8985	246.1976	72.2388	3.6166
Base	5	19	Derivas 2 Min	-34.7834	-144.9295	146.3566	-241.2833	-71.3355	-3.5801
Base	5	19	Design 6 Max	22.6203	11.3866	182.7163	23.7742	45.8308	1.1663
Base	5	19	Design 6 Min	-22.1192	-14.6135	139.7279	-20.6486	-45.2922	-1.1431
Base	5	19	Servicio	0.3707	-2.1833	217.3004	2.1099	0.3918	0.0157
Base	5	19	envolvente Max	22.7961	26.8641	276.0264	51.2053	46.0132	1.1729
Base	5	19	envolvente Min	-22.1192	-31.0194	139.7279	-47.1852	-45.2922	-1.1431
Base	5	19	Design 4 Max	7.4683	25.9357	274.4817	51.2053	14.8091	0.7379
Base	5	19	Design 4 Min	-6.6156	-31.0194	231.7734	-46.2909	-13.9058	-0.7014
Base	5	19	Derivas 3 Max	112.0992	63.3868	268.6929	112.6198	228.077	5.785
Base	5	19	Derivas 3 Min	-111.5982	-66.6137	53.7513	-109.4941	-227.5384	-5.7618
Base	5	19	Derivas 4 Max	35.4602	140.7742	267.993	245.3033	72.0565	3.61
Base	5	19	Derivas 4 Min	-34.9592	-144.0011	54.4512	-242.1776	-71.5179	-3.5868
Base	6	24	Dead	0.2677	0.0154	22.9107	-0.005	0.2317	-0.0001
Base	6	24	Live	0.8967	0.07	25.0328	-0.0236	0.7767	0.0028
Base	6	24	AME EX Max	99.3002	25.7318	130.6956	42.7616	202.5804	5.1581
Base	6	24	AME EY Max	7.6247	141.8407	12.7925	237.1089	15.4934	2.0509
Base	6	24	AME FY Max	7.6247	141.8407	12.7925	237.1089	15.4934	2.0509
Base	6	24	AME FX Max	99.3002	25.7318	130.6956	42.7616	202.5804	5.1581
Base	6	24	SD	4.1373	0.2546	99.9767	-0.0363	3.5817	0.013
Base	6	24	CM	4.4049	0.27	122.8874	-0.0413	3.8134	0.0129
Base	6	24	Design 1	6.1669	0.378	172.0424	-0.0579	5.3388	0.0181
Base	6	24	Design 2	6.7206	0.436	187.5174	-0.0873	5.8189	0.0199
Base	6	24	Design 3 Max	26.5001	14.0508	199.4044	22.7057	46.7985	1.1729
Base	6	24	Design 3 Min	-14.135	-13.2628	145.591	-22.8521	-36.0928	-1.1364
Base	6	24	Design 5 Max	11.4474	30.1551	120.9989	49.9503	18.6856	0.7313
Base	6	24	Design 5	-3.5186	-29.669	100.1984	-50.0247	-11.8214	-0.7081

Story	Joint Label	Unique Name	Load Case/Combo	FX kN	FY kN	FZ kN	MX kN-m	MY kN-m	MZ kN-m
			Min						
Base	6	24	Derivas 1 Max	107.7702	68.678	307.0311	113.8211	212.5813	5.7916
Base	6	24	Derivas 1 Min	-95.4051	-67.89	37.9644	-113.9675	-201.8756	-5.7551
Base	6	24	Derivas 2 Max	43.5974	149.9543	224.4989	249.8642	81.6204	3.6166
Base	6	24	Derivas 2 Min	-31.2323	-149.1662	120.4965	-250.0106	-70.9147	-3.5801
Base	6	24	Design 6 Max	24.2819	13.8998	137.5054	22.7417	44.8778	1.1663
Base	6	24	Design 6 Min	-16.3531	-13.4138	83.692	-22.8161	-38.0136	-1.1431
Base	6	24	Servicio	5.3016	0.34	147.9202	-0.0649	4.5902	0.0157
Base	6	24	envolvente Max	26.5001	30.3061	199.4044	49.9503	46.7985	1.1729
Base	6	24	envolvente Min	-16.3531	-29.669	83.692	-50.0607	-38.0136	-1.1431
Base	6	24	Design 4 Max	13.6655	30.3061	182.898	49.9143	20.6064	0.7379
Base	6	24	Design 4 Min	-1.3004	-29.518	162.0975	-50.0607	-9.9007	-0.7014
Base	6	24	Derivas 3 Max	105.5521	68.527	245.132	113.8571	210.6605	5.785
Base	6	24	Derivas 3 Min	-97.6233	-68.041	-23.9347	-113.9315	-203.7963	-5.7618
Base	6	24	Derivas 4 Max	41.3792	149.8033	162.5999	249.9002	79.6996	3.61
Base	6	24	Derivas 4 Min	-33.4504	-149.3173	58.5975	-249.9746	-72.8354	-3.5868
Base	7	29	Dead	0.2811	-0.0252	21.624	0.0299	0.2435	-0.0001
Base	7	29	Live	0.9008	-0.0711	24.6117	0.0981	0.7715	0.0028
Base	7	29	AME EX Max	87.812	26.5713	101.3526	43.4872	180.2219	5.1581
Base	7	29	AME EY Max	13.4378	147.4924	80.5817	241.9903	27.0137	2.0509
Base	7	29	AME FY Max	13.4378	147.4924	80.5817	241.9903	27.0137	2.0509
Base	7	29	AME FX Max	87.812	26.5713	101.3526	43.4872	180.2219	5.1581
Base	7	29	SD	4.1841	-0.3254	92.6501	0.4636	3.5808	0.013
Base	7	29	CM	4.4652	-0.3506	114.2741	0.4935	3.8243	0.0129
Base	7	29	Design 1	6.2513	-0.4908	159.9838	0.6909	5.354	0.0181
Base	7	29	Design 2	6.7995	-0.5345	176.5077	0.7491	5.8235	0.0199
Base	7	29	Design 3 Max	24.6277	13.672	186.8461	23.9071	43.0258	1.1729
Base	7	29	Design 3 Min	-12.1096	-14.6556	136.6353	-22.5266	-32.3046	-1.1364
Base	7	29	Design 5 Max	11.975	30.7772	125.0442	51.4515	19.6579	0.7313
Base	7	29	Design 5 Min	-3.9376	-31.4083	80.6492	-50.5631	-12.7742	-0.7081
Base	7	29	Derivas 1 Max	98.1024	70.3272	287.2678	116.7745	193.6865	5.7916
Base	7	29	Derivas 1 Min	-85.5843	-71.3109	36.2136	-115.394	-182.9654	-5.7551
Base	7	29	Derivas 2 Max	46.0404	154.972	272.7281	255.7267	86.4408	3.6166
Base	7	29	Derivas 2 Min	-33.5223	-155.9556	50.7532	-254.3461	-75.7196	-3.5801
Base	7	29	Design 6 Max	22.3874	13.8483	127.9522	23.661	41.107	1.1663
Base	7	29	Design 6 Min	-14.35	-14.4793	77.7413	-22.7727	-34.2233	-1.1431
Base	7	29	Servicio	5.366	-0.4217	138.8859	0.5916	4.5957	0.0157
Base	7	29	envolvente Max	24.6277	30.7772	186.8461	51.6976	43.0258	1.1729
Base	7	29	envolvente Min	-14.35	-31.5846	77.7413	-50.5631	-34.2233	-1.1431
Base	7	29	Design 4 Max	14.2153	30.6009	183.9382	51.6976	21.5766	0.7379
Base	7	29	Design 4 Min	-1.6972	-31.5846	139.5432	-50.317	-10.8555	-0.7014
Base	7	29	Derivas 3 Max	95.862	70.5035	228.3739	116.5284	191.7678	5.785
Base	7	29	Derivas 3 Min	-87.8247	-71.1346	-22.6804	-115.6401	-184.8841	-5.7618
Base	7	29	Derivas 4 Max	43.8001	155.1483	213.8342	255.4806	84.5221	3.61
Base	7	29	Derivas 4 Min	-35.7627	-155.7793	-8.1407	-254.5922	-77.6384	-3.5868
Base	8	34	Dead	0.2938	-0.1358	18.0592	0.1252	0.2546	-0.0001
Base	8	34	Live	0.4381	-0.1551	9.6938	0.1704	0.365	0.0028
Base	8	34	AME EX Max	78.5858	23.405	134.6015	40.7139	162.3626	5.1581
Base	8	34	AME EY Max	17.4726	117.8009	234.9803	216.3151	36.0939	2.0509
Base	8	34	AME FY Max	17.4726	117.8009	234.9803	216.3151	36.0939	2.0509
Base	8	34	AME FX Max	78.5858	23.405	134.6015	40.7139	162.3626	5.1581
Base	8	34	SD	2.0347	-0.673	39.3502	0.7632	1.6922	0.013
Base	8	34	CM	2.3285	-0.8087	57.4094	0.8884	1.9467	0.0129
Base	8	34	Design 1	3.2599	-1.1322	80.3732	1.2438	2.7254	0.0181
Base	8	34	Design 2	3.4952	-1.2186	84.4013	1.3388	2.92	0.0199
Base	8	34	Design 3 Max	19.9978	10.6235	119.6042	22.3582	37.3392	1.1729
Base	8	34	Design 3 Min	-13.5332	-12.8746	37.566	-19.8852	-31.9371	-1.1364
Base	8	34	Design 5 Max	10.3053	24.2366	106.7406	46.5054	18.7126	0.7313
Base	8	34	Design 5 Min	-6.1141	-25.6923	-3.4037	-44.9063	-15.2085	-0.7081
Base	8	34	Derivas 1 Max	87.0599	57.6197	283.6807	106.845	175.8918	5.7916
Base	8	34	Derivas 1 Min	-80.5953	-59.8709	-126.5105	-104.3719	-170.4897	-5.7551
Base	8	34	Derivas 2 Max	44.2807	123.6968	353.9458	229.7658	87.5038	3.6166
Base	8	34	Derivas 2 Min	-37.8161	-125.948	-196.7757	-227.2928	-82.1017	-3.5801

Story	Joint Label	Unique Name	Load Case/Combo	FX kN	FY kN	FZ kN	MX kN-m	MY kN-m	MZ kN-m
Base	8	34	Design 6 Max	18.8611	11.0212	92.6876	21.9212	36.3902	1.1663
Base	8	34	Design 6 Min	-14.6699	-12.4769	10.6494	-20.3221	-32.8861	-1.1431
Base	8	34	Servicio	2.7666	-0.9638	67.1032	1.0588	2.3117	0.0157
Base	8	34	envolvente Max	19.9978	24.2366	133.6572	46.9424	37.3392	1.1729
Base	8	34	envolvente Min	-14.6699	-26.0901	-3.4037	-44.9063	-32.8861	-1.1431
Base	8	34	Design 4 Max	11.442	23.8389	133.6572	46.9424	19.6616	0.7379
Base	8	34	Design 4 Min	-4.9774	-26.0901	23.5129	-44.4693	-14.2595	-0.7014
Base	8	34	Derivas 3 Max	85.9232	58.0175	256.7641	106.408	174.9428	5.785
Base	8	34	Derivas 3 Min	-81.732	-59.4732	-153.4271	-104.8089	-171.4387	-5.7618
Base	8	34	Derivas 4 Max	43.144	124.0946	327.0292	229.3288	86.5548	3.61
Base	8	34	Derivas 4 Min	-38.9527	-125.5503	-223.6923	-227.7297	-83.0507	-3.5868
Base	9	39	Dead	0.0004	0.4911	21.8592	-0.4148	0.0006	-0.0001
Base	9	39	Live	0.4946	1.668	29.613	-1.4129	0.4661	0.0028
Base	9	39	AME EX Max	188.4953	2.566	2.7426	4.943	337.0969	5.1581
Base	9	39	AME EY Max	20.2289	100.5941	108.5688	196.0492	35.1433	2.0509
Base	9	39	AME FY Max	20.2289	100.5941	108.5688	196.0492	35.1433	2.0509
Base	9	39	AME FX Max	188.4953	2.566	2.7426	4.943	337.0969	5.1581
Base	9	39	SD	2.2967	7.7865	137.4551	-6.5841	2.1634	0.013
Base	9	39	CM	2.2971	8.2776	159.3143	-6.9989	2.164	0.0129
Base	9	39	Design 1	3.2159	11.5886	223.04	-9.7984	3.0296	0.0181
Base	9	39	Design 2	3.5479	12.602	238.5579	-10.6593	3.3426	0.0199
Base	9	39	Design 3 Max	42.1639	18.15	227.8528	2.94	72.5909	1.1729
Base	9	39	Design 3 Min	-35.6617	5.0523	213.7275	-22.5631	-66.465	-1.1364
Base	9	39	Design 5 Max	17.4229	27.7226	165.2612	33.2074	29.2021	0.7313
Base	9	39	Design 5 Min	-13.2881	-12.823	121.5045	-45.8054	-25.3069	-0.7081
Base	9	39	Derivas 1 Max	197.8151	44.3453	256.1033	53.9462	350.7029	5.7916
Base	9	39	Derivas 1 Min	-191.3129	-21.1431	185.4769	-73.5694	-344.577	-5.7551
Base	9	39	Derivas 2 Max	80.0286	112.965	330.1817	187.7205	139.3353	3.6166
Base	9	39	Derivas 2 Min	-73.5264	-89.7627	111.3986	-207.3437	-133.2095	-3.5801
Base	9	39	Design 6 Max	40.9802	13.9987	150.4455	6.4526	71.4756	1.1663
Base	9	39	Design 6 Min	-36.8454	0.901	136.3202	-19.0506	-67.5804	-1.1431
Base	9	39	Servicio	2.7917	9.9456	188.9273	-8.4118	2.6301	0.0157
Base	9	39	envolvente Max	42.1639	31.8739	242.6684	33.2074	72.5909	1.1729
Base	9	39	envolvente Min	-36.8454	-12.823	121.5045	-49.318	-67.5804	-1.1431
Base	9	39	Design 4 Max	18.6066	31.8739	242.6684	29.6949	30.3174	0.7379
Base	9	39	Design 4 Min	-12.1044	-8.6716	198.9118	-49.318	-24.1915	-0.7014
Base	9	39	Derivas 3 Max	196.6314	40.194	178.6961	57.4588	349.5876	5.785
Base	9	39	Derivas 3 Min	-192.4966	-25.2944	108.0696	-70.0568	-345.6923	-5.7618
Base	9	39	Derivas 4 Max	78.8448	108.8137	252.7744	191.2331	138.22	3.61
Base	9	39	Derivas 4 Min	-74.7101	-93.914	33.9913	-203.8311	-134.3248	-3.5868
Base	10	44	Dead	0.0014	-0.2811	33.9827	0.2507	0.0018	-0.0001
Base	10	44	Live	0.0224	-0.9109	72.7448	0.8098	0.0451	0.0028
Base	10	44	AME EX Max	165.0511	3.0322	0.4949	5.3485	293.4808	5.1581
Base	10	44	AME EY Max	8.6461	119.2018	18.717	212.1623	14.798	2.0509
Base	10	44	AME FY Max	8.6461	119.2018	18.717	212.1623	14.798	2.0509
Base	10	44	AME FX Max	165.0511	3.0322	0.4949	5.3485	293.4808	5.1581
Base	10	44	SD	0.1051	-4.3068	337.6805	3.8389	0.2087	0.013
Base	10	44	CM	0.1065	-4.5879	371.6632	4.0896	0.2106	0.0129
Base	10	44	Design 1	0.1491	-6.423	520.3285	5.7255	0.2948	0.0181
Base	10	44	Design 2	0.1637	-6.9628	562.3876	6.2033	0.3248	0.0199
Base	10	44	Design 3 Max	33.6792	1.3422	519.9627	19.5168	59.8818	1.1729
Base	10	44	Design 3 Min	-33.3787	-14.1749	517.5187	-8.0821	-59.2863	-1.1364
Base	10	44	Design 5 Max	11.7282	19.8932	338.27	46.434	20.758	0.7313
Base	10	44	Design 5 Min	-11.5364	-28.1514	330.7238	-39.0727	-20.3789	-0.7081
Base	10	44	Derivas 1 Max	167.7952	32.3764	524.8506	74.7145	298.218	5.7916
Base	10	44	Derivas 1 Min	-167.4946	-45.2091	512.6307	-63.2798	-297.6224	-5.7551
Base	10	44	Derivas 2 Max	58.3117	113.6951	537.6062	219.4842	103.1401	3.6166
Base	10	44	Derivas 2 Min	-58.0112	-126.5278	499.8752	-208.0495	-102.5445	-3.5801
Base	10	44	Design 6 Max	33.6248	3.6295	335.7189	17.4801	59.7736	1.1663
Base	10	44	Design 6 Min	-33.4331	-11.8876	333.2749	-10.1188	-59.3945	-1.1431
Base	10	44	Servicio	0.129	-5.4987	444.408	4.8994	0.2557	0.0157
Base	10	44	envolvente Max	33.6792	19.8932	562.3876	48.4707	59.8818	1.1729
Base	10	44	envolvente Min	-33.4331	-30.4386	330.7238	-39.0727	-59.3945	-1.1431

Story	Joint Label	Unique Name	Load Case/Combo	FX kN	FY kN	FZ kN	MX kN-m	MY kN-m	MZ kN-m
Base	10	44	Design 4 Max	11.7826	17.606	522.5138	48.4707	20.8662	0.7379
Base	10	44	Design 4 Min	-11.482	-30.4386	514.9676	-37.036	-20.2707	-0.7014
Base	10	44	Derivas 3 Max	167.7408	34.6637	340.6069	72.6778	298.1097	5.785
Base	10	44	Derivas 3 Min	-167.549	-42.9218	328.3869	-65.3165	-297.7307	-5.7618
Base	10	44	Derivas 4 Max	58.2573	115.9824	353.3624	217.4475	103.0318	3.61
Base	10	44	Derivas 4 Min	-58.0656	-124.2406	315.6314	-210.0862	-102.6528	-3.5868
Base	11	49	Dead	0.0018	-0.2675	12.3044	0.239	0.0024	-0.0001
Base	11	49	Live	0.0218	-1.4196	26.2179	1.2483	0.0318	0.0028
Base	11	49	AME EX Max	194.0078	4.1135	0.8656	6.2946	298.1856	5.1581
Base	11	49	AME EY Max	3.4925	163.8771	33.4303	250.8362	5.356	2.0509
Base	11	49	AME FY Max	3.4925	163.8771	33.4303	250.8362	5.356	2.0509
Base	11	49	AME FX Max	194.0078	4.1135	0.8656	6.2946	298.1856	5.1581
Base	11	49	SD	0.0982	-6.6423	121.4734	5.8519	0.1431	0.013
Base	11	49	CM	0.1	-6.9098	133.7778	6.0909	0.1455	0.0129
Base	11	49	Design 1	0.14	-9.6737	187.289	8.5272	0.2037	0.0181
Base	11	49	Design 2	0.1549	-10.5632	202.482	9.3063	0.2255	0.0199
Base	11	49	Design 3 Max	39.1529	0.9439	188.9302	24.8665	60.1649	1.1729
Base	11	49	Design 3 Min	-38.8693	-20.3667	184.5724	-7.7518	-59.7521	-1.1364
Base	11	49	Design 5 Max	12.429	26.8034	127.138	56.0267	19.0933	0.7313
Base	11	49	Design 5 Min	-12.249	-39.2411	113.6621	-45.0631	-18.8314	-0.7081
Base	11	49	Derivas 1 Max	195.1974	43.5652	197.646	90.1029	299.9988	5.7916
Base	11	49	Derivas 1 Min	-194.9137	-62.988	175.8566	-72.9882	-299.586	-5.7551
Base	11	49	Derivas 2 Max	61.8366	155.3997	220.4413	261.282	95.0181	3.6166
Base	11	49	Derivas 2 Min	-61.553	-174.8225	153.0613	-244.1673	-94.6053	-3.5801
Base	11	49	Design 6 Max	39.1011	4.4365	122.579	21.7909	60.0894	1.1663
Base	11	49	Design 6 Min	-38.9211	-16.8742	118.2211	-10.8273	-59.8275	-1.1431
Base	11	49	Servicio	0.1218	-8.3294	159.9957	7.3392	0.1773	0.0157
Base	11	49	envolvente Max	39.1529	26.8034	202.482	59.1023	60.1649	1.1729
Base	11	49	envolvente Min	-38.9211	-42.7336	113.6621	-45.0631	-59.8275	-1.1431
Base	11	49	Design 4 Max	12.4808	23.3108	193.4893	59.1023	19.1687	0.7379
Base	11	49	Design 4 Min	-12.1971	-42.7336	180.0133	-41.9876	-18.7559	-0.7014
Base	11	49	Derivas 3 Max	195.1455	47.0578	131.2947	87.0273	299.9234	5.785
Base	11	49	Derivas 3 Min	-194.9656	-59.4955	109.5054	-76.0637	-299.6615	-5.7618
Base	11	49	Derivas 4 Max	61.7848	158.8923	154.09	258.2064	94.9427	3.61
Base	11	49	Derivas 4 Min	-61.6048	-171.3299	86.7101	-247.2428	-94.6808	-3.5868
Base	12	54	Dead	0.0119	0.2005	35.3636	-0.1644	0.0112	-0.0001
Base	12	54	Live	0.0353	0.709	58.7184	-0.5863	0.0343	0.0028
Base	12	54	AME EX Max	128.066	3.3816	7.5325	5.6528	227.4939	5.1581
Base	12	54	AME EY Max	9.8536	133.8165	54.2929	224.8141	17.4216	2.0509
Base	12	54	AME FY Max	9.8536	133.8165	54.2929	224.8141	17.4216	2.0509
Base	12	54	AME FX Max	128.066	3.3816	7.5325	5.6528	227.4939	5.1581
Base	12	54	SD	0.1593	3.5235	256.1003	-2.9099	0.1532	0.013
Base	12	54	CM	0.1711	3.724	291.4638	-3.0743	0.1644	0.0129
Base	12	54	Design 1	0.2396	5.2136	408.0494	-4.304	0.2302	0.0181
Base	12	54	Design 2	0.2618	5.6032	443.706	-4.6272	0.2522	0.0199
Base	12	54	Design 3 Max	26.4451	13.8831	413.239	10.344	46.7757	1.1729
Base	12	54	Design 3 Min	-25.9638	-3.5275	403.7109	-18.8948	-46.3125	-1.1364
Base	12	54	Design 5 Max	9.8087	30.3178	273.628	42.5351	17.2819	0.7313
Base	12	54	Design 5 Min	-9.5007	-23.6146	251.0069	-48.0688	-16.986	-0.7081
Base	12	54	Derivas 1 Max	131.2628	48.7044	432.2953	68.8216	232.952	5.7916
Base	12	54	Derivas 1 Min	-130.7815	-38.3488	384.6546	-77.3724	-232.4887	-5.7551
Base	12	54	Derivas 2 Max	48.5141	140.0088	465.0276	222.2345	85.9013	3.6166
Base	12	54	Derivas 2 Min	-48.0328	-129.6532	351.9222	-230.7853	-85.4381	-3.5801
Base	12	54	Design 6 Max	26.3584	12.0569	267.0815	11.8526	46.692	1.1663
Base	12	54	Design 6 Min	-26.0504	-5.3537	257.5534	-17.3862	-46.3961	-1.1431
Base	12	54	Servicio	0.2064	4.433	350.1822	-3.6606	0.1987	0.0157
Base	12	54	envolvente Max	26.4451	32.144	443.706	42.5351	46.7757	1.1729
Base	12	54	envolvente Min	-26.0504	-23.6146	251.0069	-49.5774	-46.3961	-1.1431
Base	12	54	Design 4 Max	9.8953	32.144	419.7855	41.0266	17.3656	0.7379
Base	12	54	Design 4 Min	-9.414	-21.7884	397.1644	-49.5774	-16.9023	-0.7014
Base	12	54	Derivas 3 Max	131.1761	46.8782	286.1378	70.3302	232.8683	5.785
Base	12	54	Derivas 3 Min	-130.8681	-40.175	238.497	-75.8639	-232.5724	-5.7618
Base	12	54	Derivas 4	48.4275	138.1826	318.8701	223.7431	85.8177	3.61

Story	Joint Label	Unique Name	Load Case/Combo	FX kN	FY kN	FZ kN	MX kN-m	MY kN-m	MZ kN-m
			Max						
Base	12	54	Derivas 4 Min	-48.1194	-131.4794	205.7647	-229.2767	-85.5217	-3.5868
Base	13	59	Dead	0.0004	-0.1057	22.3294	0.0996	0.0015	-0.0001
Base	13	59	Live	-0.0519	-0.3576	36.2519	0.333	-0.0496	0.0028
Base	13	59	AME EX Max	111.5169	3.7924	8.5283	6.0111	200.7346	5.1581
Base	13	59	AME EY Max	16.8727	144.7956	140.9332	234.2998	29.9806	2.0509
Base	13	59	AME FY Max	16.8727	144.7956	140.9332	234.2998	29.9806	2.0509
Base	13	59	AME FX Max	111.5169	3.7924	8.5283	6.0111	200.7346	5.1581
Base	13	59	SD	-0.24	-1.683	167.4048	1.5775	-0.2323	0.013
Base	13	59	CM	-0.2397	-1.7888	189.7341	1.6771	-0.2308	0.0129
Base	13	59	Design 1	-0.3355	-2.5043	265.6278	2.348	-0.3231	0.0181
Base	13	59	Design 2	-0.3706	-2.7187	285.6839	2.5453	-0.3563	0.0199
Base	13	59	Design 3 Max	22.9763	6.9421	274.0945	17.6057	41.6192	1.1729
Base	13	59	Design 3 Min	-23.6552	-11.9504	253.7712	-12.9147	-42.2723	-1.1364
Base	13	59	Design 5 Max	9.8499	27.5768	199.4591	48.73	17.8325	0.7313
Base	13	59	Design 5 Min	-10.2812	-30.7965	142.0624	-45.7112	-18.2479	-0.7081
Base	13	59	Derivas 1 Max	116.2392	44.727	314.7411	78.6465	209.4022	5.7916
Base	13	59	Derivas 1 Min	-116.9181	-49.7352	213.1245	-73.9555	-210.0553	-5.7551
Base	13	59	Derivas 2 Max	49.9883	143.4292	407.4245	238.4486	89.8745	3.6166
Base	13	59	Derivas 2 Min	-50.6672	-148.4374	120.4411	-233.7576	-90.5276	-3.5801
Base	13	59	Design 6 Max	23.1	7.8363	180.9224	16.7696	41.7381	1.1663
Base	13	59	Design 6 Min	-23.5314	-11.0561	160.5991	-13.7508	-42.1534	-1.1431
Base	13	59	Servicio	-0.2915	-2.1464	225.986	2.0101	-0.2804	0.0157
Base	13	59	envolvente Max	23.1	27.5768	292.6312	49.5661	41.7381	1.1729
Base	13	59	envolvente Min	-23.6552	-31.6908	142.0624	-45.7112	-42.2723	-1.1431
Base	13	59	Design 4 Max	9.7261	26.6825	292.6312	49.5661	17.7137	0.7379
Base	13	59	Design 4 Min	-10.405	-31.6908	235.2345	-44.8751	-18.3668	-0.7014
Base	13	59	Derivas 3 Max	116.363	45.6212	221.569	77.8104	209.5211	5.785
Base	13	59	Derivas 3 Min	-116.7944	-48.841	119.9524	-74.7916	-209.9365	-5.7618
Base	13	59	Derivas 4 Max	50.1121	144.3234	314.2524	237.6125	89.9933	3.61
Base	13	59	Derivas 4 Min	-50.5434	-147.5432	27.269	-234.5937	-90.4087	-3.5868
Base	14	64	Dead	0.0012	-0.0523	23.4635	0.0535	0.0024	-0.0001
Base	14	64	Live	-0.065	-0.0897	16.2337	0.102	-0.0673	0.0028
Base	14	64	AME EX Max	101.5931	4.9202	10.4994	5.7705	183.9726	5.1581
Base	14	64	AME EY Max	20.2302	118.089	288.6301	211.2141	37.3464	2.0509
Base	14	64	AME FY Max	20.2302	118.089	288.6301	211.2141	37.3464	2.0509
Base	14	64	AME FX Max	101.5931	4.9202	10.4994	5.7705	183.9726	5.1581
Base	14	64	SD	-0.31	-0.4164	73.6666	0.4859	-0.3222	0.013
Base	14	64	CM	-0.3088	-0.4688	97.1301	0.5394	-0.3198	0.0129
Base	14	64	Design 1	-0.4323	-0.6563	135.9821	0.7552	-0.4478	0.0181
Base	14	64	Design 2	-0.4745	-0.706	142.53	0.8106	-0.4914	0.0199
Base	14	64	Design 3 Max	21.097	7.4172	152.2074	14.5763	38.5843	1.1729
Base	14	64	Design 3 Min	-21.9679	-8.7216	113.3721	-13.0776	-39.4864	-1.1364
Base	14	64	Design 5 Max	9.8638	23.4911	145.773	43.0745	18.2198	0.7313
Base	14	64	Design 5 Min	-10.4195	-24.3349	29.0611	-42.1036	-18.7955	-0.7081
Base	14	64	Derivas 1 Max	107.2267	39.6947	229.8782	69.8841	194.7255	5.7916
Base	14	64	Derivas 1 Min	-108.0977	-40.999	35.7013	-68.3854	-195.6276	-5.7551
Base	14	64	Derivas 2 Max	50.2727	118.9129	424.5696	213.6946	92.0872	3.6166
Base	14	64	Derivas 2 Min	-51.1436	-120.2172	-158.9901	-212.1959	-92.9893	-3.5801
Base	14	64	Design 6 Max	21.2546	7.6475	106.8347	14.3124	38.7475	1.1663
Base	14	64	Design 6 Min	-21.8103	-8.4913	67.9994	-13.3415	-39.3232	-1.1431
Base	14	64	Servicio	-0.3737	-0.5584	113.3637	0.6415	-0.3871	0.0157
Base	14	64	envolvente Max	21.2546	23.4911	191.1457	43.3384	38.7475	1.1729
Base	14	64	envolvente Min	-21.9679	-24.5652	29.0611	-42.1036	-39.4864	-1.1431
Base	14	64	Design 4 Max	9.7061	23.2608	191.1457	43.3384	18.0566	0.7379
Base	14	64	Design 4 Min	-10.5771	-24.5652	74.4338	-41.8397	-18.9587	-0.7014
Base	14	64	Derivas 3 Max	107.3843	39.925	184.5055	69.6202	194.8887	5.785
Base	14	64	Derivas 3 Min	-107.9401	-40.7688	-9.6714	-68.6492	-195.4644	-5.7618
Base	14	64	Derivas 4 Max	50.4303	119.1431	379.1969	213.4307	92.2504	3.61
Base	14	64	Derivas 4 Min	-50.986	-119.9869	-204.3628	-212.4597	-92.8261	-3.5868
Base	15	69	Dead	-0.2745	0.2158	16.4783	-0.1773	-0.2362	-0.0001
Base	15	69	Live	-0.5547	0.4988	15.6506	-0.4172	-0.4403	0.0028
Base	15	69	AME EX Max	148.6913	28.6126	148.6688	48.91	299.2396	5.1581
Base	15	69	AME EY Max	13.5568	98.4828	89.0311	189.3541	27.6102	2.0509

Story	Joint Label	Unique Name	Load Case/Combo	FX kN	FY kN	FZ kN	MX kN-m	MY kN-m	MZ kN-m
Base	15	69	AME FY Max	13.5568	98.4828	89.0311	189.3541	27.6102	2.0509
Base	15	69	AME FX Max	148.6913	28.6126	148.6688	48.91	299.2396	5.1581
Base	15	69	SD	-2.5792	2.3911	72.3585	-1.9901	-2.0486	0.013
Base	15	69	CM	-2.8537	2.6069	88.8368	-2.1674	-2.2848	0.0129
Base	15	69	Design 1	-3.9952	3.6497	124.3715	-3.0343	-3.1988	0.0181
Base	15	69	Design 2	-4.3119	3.9264	131.6452	-3.2684	-3.4463	0.0199
Base	15	69	Design 3 Max	26.5725	15.2586	157.3304	18.1252	58.3224	1.1729
Base	15	69	Design 3 Min	-34.5308	-8.0044	87.1792	-24.1613	-64.6867	-1.1364
Base	15	69	Design 5 Max	9.0645	23.7595	106.6795	38.8548	21.4201	0.7313
Base	15	69	Design 5 Min	-14.2012	-19.0671	53.2268	-42.7561	-25.5328	-0.7081
Base	15	69	Derivas 1 Max	148.7792	61.7846	297.6329	102.6982	304.3405	5.7916
Base	15	69	Derivas 1 Min	-156.7375	-54.5303	-53.1234	-108.7343	-310.7048	-5.7551
Base	15	69	Derivas 2 Max	54.1851	110.6937	255.8866	201.0091	114.2	3.6166
Base	15	69	Derivas 2 Min	-62.1433	-103.4395	-11.377	-207.0452	-120.5642	-3.5801
Base	15	69	Design 6 Max	27.9834	13.9777	115.0288	19.1926	59.4482	1.1663
Base	15	69	Design 6 Min	-33.12	-9.2853	44.8775	-23.0939	-63.5609	-1.1431
Base	15	69	Servicio envolvente Max	-3.4084	3.1057	104.4874	-2.5846	-2.7252	0.0157
Base	15	69	envolvente Max	27.9834	25.0404	157.3304	38.8548	59.4482	1.1729
Base	15	69	envolvente Min	-34.5308	-19.0671	44.8775	-43.8235	-64.6867	-1.1431
Base	15	69	Design 4 Max	7.6537	25.0404	148.9811	37.7874	20.2943	0.7379
Base	15	69	Design 4 Min	-15.612	-17.7862	95.5284	-43.8235	-26.6585	-0.7014
Base	15	69	Derivas 3 Max	150.19	60.5037	255.3313	103.7656	305.4663	5.785
Base	15	69	Derivas 3 Min	-155.3267	-55.8113	-95.425	-107.6669	-309.579	-5.7618
Base	15	69	Derivas 4 Max	55.5959	109.4128	213.5849	202.0765	115.3257	3.61
Base	15	69	Derivas 4 Min	-60.7325	-104.7204	-53.6786	-205.9778	-119.4384	-3.5868
Base	16	74	Dead	-0.2692	0.0493	25.5236	-0.0338	-0.2314	-0.0001
Base	16	74	Live	-0.9764	0.1359	34.143	-0.1043	-0.8158	0.0028
Base	16	74	AME EX Max	130.6624	27.4346	156.8008	47.942	263.7476	5.1581
Base	16	74	AME EY Max	6.9756	118.2355	11.6441	206.4714	13.3501	2.0509
Base	16	74	AME FY Max	6.9756	118.2355	11.6441	206.4714	13.3501	2.0509
Base	16	74	AME FX Max	130.6624	27.4346	156.8008	47.942	263.7476	5.1581
Base	16	74	SD	-4.5176	0.3495	142.8096	-0.2305	-3.7755	0.013
Base	16	74	CM	-4.7868	0.3988	168.3332	-0.2643	-4.0069	0.0129
Base	16	74	Design 1	-6.7015	0.5584	235.6664	-0.37	-5.6096	0.0181
Base	16	74	Design 2	-7.3064	0.696	256.6285	-0.4841	-6.1135	0.0199
Base	16	74	Design 3 Max	19.8305	13.1955	268.2016	21.5552	47.9265	1.1729
Base	16	74	Design 3 Min	-33.2716	-11.9666	204.084	-22.3982	-59.1746	-1.1364
Base	16	74	Design 5 Max	4.9268	25.6521	163.2367	43.9329	14.8887	0.7313
Base	16	74	Design 5 Min	-13.543	-24.9342	139.763	-44.4087	-22.1011	-0.7081
Base	16	74	Derivas 1 Max	126.0345	63.5197	396.4368	109.4619	262.1285	5.7916
Base	16	74	Derivas 1 Min	-139.4756	-62.2908	75.8487	-110.3049	-273.3767	-5.7551
Base	16	74	Derivas 2 Max	39.4538	127.0804	294.8271	220.4325	86.8504	3.6166
Base	16	74	Derivas 2 Min	-52.8949	-125.8515	177.4584	-221.2755	-98.0985	-3.5801
Base	16	74	Design 6 Max	22.2429	12.94	183.5587	21.7388	49.9443	1.1663
Base	16	74	Design 6 Min	-30.8591	-12.2221	119.441	-22.2145	-57.1567	-1.1431
Base	16	74	Servicio	-5.7632	0.5347	202.4761	-0.3686	-4.8227	0.0157
Base	16	74	envolvente Max	22.2429	25.9076	268.2016	43.9329	49.9443	1.1729
Base	16	74	envolvente Min	-33.2716	-24.9342	119.441	-44.5923	-59.1746	-1.1431
Base	16	74	Design 4 Max	2.5143	25.9076	247.8796	43.7493	12.8708	0.7379
Base	16	74	Design 4 Min	-15.9554	-24.6787	224.4059	-44.5923	-24.1189	-0.7014
Base	16	74	Derivas 3 Max	128.4469	63.2642	311.7939	109.6456	264.1464	5.785
Base	16	74	Derivas 3 Min	-137.0632	-62.5463	-8.7942	-110.1213	-271.3588	-5.7618
Base	16	74	Derivas 4 Max	41.8662	126.8248	210.1842	220.6162	88.8682	3.61
Base	16	74	Derivas 4 Min	-50.4825	-126.107	92.8155	-221.0919	-96.0806	-3.5868
Base	17	79	Dead	-0.0092	-0.1459	28.1565	0.1344	-0.0071	-0.0001
Base	17	79	Live	-0.0828	-0.3829	38.1891	0.3428	-0.0584	0.0028
Base	17	79	AME EX Max	111.1558	28.7541	80.5898	49.0827	226.5472	5.1581
Base	17	79	AME EY Max	2.1046	123.5185	74.4451	211.0496	4.1102	2.0509
Base	17	79	AME FY Max	2.1046	123.5185	74.4451	211.0496	4.1102	2.0509
Base	17	79	AME FX Max	111.1558	28.7541	80.5898	49.0827	226.5472	5.1581
Base	17	79	SD	-0.2227	-1.6039	150.9945	1.4532	-0.1335	0.013
Base	17	79	CM	-0.2319	-1.7498	179.151	1.5876	-0.1406	0.0129
Base	17	79	Design 1	-0.3247	-2.4498	250.8114	2.2227	-0.1968	0.0181
Base	17	79	Design 2	-0.4108	-2.7125	276.0837	2.4536	-0.2621	0.0199

Story	Joint Label	Unique Name	Load Case/Combo	FX kN	FY kN	FZ kN	MX kN-m	MY kN-m	MZ kN-m
Base	17	79	Design 3 Max	21.9963	10.6792	273.755	24.7274	45.329	1.1729
Base	17	79	Design 3 Min	-22.7185	-15.6446	232.5856	-20.2316	-45.7831	-1.1364
Base	17	79	Design 5 Max	6.8815	24.8541	180.9603	46.5837	14.2884	0.7313
Base	17	79	Design 5 Min	-7.299	-28.0038	141.5115	-43.726	-14.5414	-0.7081
Base	17	79	Derivas 1 Max	111.4261	63.3269	356.0936	114.6454	227.5532	5.7916
Base	17	79	Derivas 1 Min	-112.1483	-68.2924	150.247	-110.1496	-228.0073	-5.7551
Base	17	79	Derivas 2 Max	35.0903	129.662	351.7923	228.0223	71.8473	3.6166
Base	17	79	Derivas 2 Min	-35.8125	-134.6274	154.5483	-223.5265	-72.3014	-3.5801
Base	17	79	Design 6 Max	22.1487	11.5871	181.8206	23.9084	45.4295	1.1663
Base	17	79	Design 6 Min	-22.5662	-14.7368	140.6513	-21.0507	-45.6826	-1.1431
Base	17	79	Servicio	-0.3147	-2.1327	217.3401	1.9304	-0.1989	0.0157
Base	17	79	envolvente Max	22.1487	24.8541	276.0837	47.4028	45.4295	1.1729
Base	17	79	envolvente Min	-22.7185	-28.9117	140.6513	-43.726	-45.7831	-1.1431
Base	17	79	Design 4 Max	6.7292	23.9462	272.8947	47.4028	14.1878	0.7379
Base	17	79	Design 4 Min	-7.4514	-28.9117	233.4459	-42.907	-14.6419	-0.7014
Base	17	79	Derivas 3 Max	111.5785	64.2348	264.1592	113.8264	227.6537	5.785
Base	17	79	Derivas 3 Min	-111.996	-67.3845	58.3126	-110.9687	-227.9068	-5.7618
Base	17	79	Derivas 4 Max	35.2426	130.5699	259.8579	227.2032	71.9478	3.61
Base	17	79	Derivas 4 Min	-35.6601	-133.7196	62.6139	-224.3455	-72.2009	-3.5868
Base	18	84	Dead	-0.2995	0.0248	24.9029	-0.0127	-0.2571	-0.0001
Base	18	84	Live	-1.0012	0.0965	25.1559	-0.0704	-0.859	0.0028
Base	18	84	AME EX Max	98.2835	30.0988	137.1693	50.2443	201.7256	5.1581
Base	18	84	AME EY Max	7.6558	128.9834	11.0281	215.7777	15.519	2.0509
Base	18	84	AME FY Max	7.6558	128.9834	11.0281	215.7777	15.519	2.0509
Base	18	84	AME FX Max	98.2835	30.0988	137.1693	50.2443	201.7256	5.1581
Base	18	84	SD	-4.6287	0.3625	100.3156	-0.2417	-3.9735	0.013
Base	18	84	CM	-4.9282	0.3873	125.2185	-0.2544	-4.2306	0.0129
Base	18	84	Design 1	-6.8995	0.5423	175.3059	-0.3561	-5.9229	0.0181
Base	18	84	Design 2	-7.5158	0.6191	190.5116	-0.4179	-6.4512	0.0199
Base	18	84	Design 3 Max	13.201	14.32	203.5136	22.6199	35.3405	1.1729
Base	18	84	Design 3 Min	-27.0311	-13.1975	147.3226	-23.3712	-47.212	-1.1364
Base	18	84	Design 5 Max	2.9928	27.9512	123.1324	45.9412	11.3998	0.7313
Base	18	84	Design 5 Min	-11.8636	-27.254	102.2609	-46.3991	-19.0149	-0.7081
Base	18	84	Derivas 1 Max	93.6651	69.3551	315.8958	114.602	200.4455	5.7916
Base	18	84	Derivas 1 Min	-107.4953	-68.2326	34.9404	-115.3533	-212.3171	-5.7551
Base	18	84	Derivas 2 Max	30.2258	138.5743	227.5969	230.4753	70.1009	3.6166
Base	18	84	Derivas 2 Min	-44.0559	-137.4518	123.2393	-231.2266	-81.9725	-3.5801
Base	18	84	Design 6 Max	15.6806	14.1074	140.7922	22.7666	37.4687	1.1663
Base	18	84	Design 6 Min	-24.5514	-13.4102	84.6011	-23.2245	-45.0838	-1.1431
Base	18	84	Servicio	-5.9294	0.4838	150.3744	-0.3248	-5.0896	0.0157
Base	18	84	envolvente Max	15.6806	28.1639	203.5136	45.9412	37.4687	1.1729
Base	18	84	envolvente Min	-27.0311	-27.254	84.6011	-46.5458	-47.212	-1.1431
Base	18	84	Design 4 Max	0.5131	28.1639	185.8539	45.7945	9.2716	0.7379
Base	18	84	Design 4 Min	-14.3432	-27.0413	164.9823	-46.5458	-21.1431	-0.7014
Base	18	84	Derivas 3 Max	96.1448	69.1425	253.1743	114.7487	202.5737	5.785
Base	18	84	Derivas 3 Min	-105.0156	-68.4453	-27.781	-115.2066	-210.1889	-5.7618
Base	18	84	Derivas 4 Max	32.7054	138.3617	164.8755	230.622	72.2291	3.61
Base	18	84	Derivas 4 Min	-41.5762	-137.6644	60.5178	-231.0799	-79.8443	-3.5868
Base	19	89	Dead	-0.2798	-0.1018	20.3278	0.0964	-0.2399	-0.0001
Base	19	89	Live	-0.8221	-0.1718	21.1034	0.1609	-0.7135	0.0028
Base	19	89	AME EX Max	87.6492	33.7909	71.0799	53.4318	180.0838	5.1581
Base	19	89	AME EY Max	13.4451	144.6377	276.7717	229.299	27.0198	2.0509
Base	19	89	AME FY Max	13.4451	144.6377	276.7717	229.299	27.0198	2.0509
Base	19	89	AME FX Max	87.6492	33.7909	71.0799	53.4318	180.0838	5.1581
Base	19	89	SD	-3.8156	-0.7522	79.4783	0.7191	-3.314	0.013
Base	19	89	CM	-4.0953	-0.854	99.8062	0.8155	-3.5539	0.0129
Base	19	89	Design 1	-5.7335	-1.1956	139.7286	1.1417	-4.9755	0.0181
Base	19	89	Design 2	-6.2298	-1.2997	153.5328	1.236	-5.4062	0.0199
Base	19	89	Design 3 Max	12.6001	14.2398	171.6931	25.5838	32.6598	1.1729
Base	19	89	Design 3 Min	-24.073	-16.6331	110.0485	-23.3049	-42.6161	-1.1364
Base	19	89	Design 5 Max	4.2622	30.1864	149.4447	49.7996	13.0105	0.7313
Base	19	89	Design 5 Min	-11.6338	-31.7236	30.2064	-48.3318	-19.4075	-0.7081
Base	19	89	Derivas 1	85.9462	75.9856	294.9822	123.361	183.2115	5.7916

Story	Joint Label	Unique Name	Load Case/Combo	FX kN	FY kN	FZ kN	MX kN-m	MY kN-m	MZ kN-m
			Max						
Base	19	89	Derivas 1 Min	-97.4192	-78.3789	-13.2406	-121.0821	-193.1678	-5.7551
Base	19	89	Derivas 2 Max	34.0034	153.5784	438.9665	246.468	76.0668	3.6166
Base	19	89	Derivas 2 Min	-45.4764	-155.9716	-157.2249	-244.1891	-86.0231	-3.5801
Base	19	89	Design 6 Max	14.6507	14.6679	120.6478	25.1782	34.4394	1.1663
Base	19	89	Design 6 Min	-22.0223	-16.205	59.0033	-23.7104	-40.8364	-1.1431
Base	19	89	Servicio	-4.9174	-1.0258	120.9096	0.9763	-4.2674	0.0157
Base	19	89	envolvente Max	14.6507	30.1864	200.4899	50.2052	34.4394	1.1729
Base	19	89	envolvente Min	-24.073	-32.1516	30.2064	-48.3318	-42.6161	-1.1431
Base	19	89	Design 4 Max	2.2115	29.7584	200.4899	50.2052	11.2308	0.7379
Base	19	89	Design 4 Min	-13.6845	-32.1516	81.2517	-47.9263	-21.1871	-0.7014
Base	19	89	Derivas 3 Max	87.9969	76.4137	243.937	122.9555	184.9912	5.785
Base	19	89	Derivas 3 Min	-95.3685	-77.9508	-64.2859	-121.4876	-191.3882	-5.7618
Base	19	89	Derivas 4 Max	36.0541	154.0064	387.9212	246.0625	77.8464	3.61
Base	19	89	Derivas 4 Min	-43.4257	-155.5436	-208.2701	-244.5946	-84.2435	-3.5868
Base	20	94	Dead	-0.2875	-0.0038	16.5483	0.012	-0.2465	-0.0001
Base	20	94	Live	-0.3726	0.0275	7.9226	-0.011	-0.331	0.0028
Base	20	94	AME EX Max	80.9781	26.7081	194.5284	47.2823	167.8675	5.1581
Base	20	94	AME EY Max	16.0201	120.4531	437.3581	208.3923	32.7823	2.0509
Base	20	94	AME FY Max	16.0201	120.4531	437.3581	208.3923	32.7823	2.0509
Base	20	94	AME FX Max	80.9781	26.7081	194.5284	47.2823	167.8675	5.1581
Base	20	94	SD	-1.7157	0.1417	30.6718	-0.0513	-1.5272	0.013
Base	20	94	CM	-2.0032	0.1379	47.2201	-0.0394	-1.7737	0.0129
Base	20	94	Design 1	-2.8045	0.193	66.1081	-0.0551	-2.4832	0.0181
Base	20	94	Design 2	-3	0.2095	69.3403	-0.0648	-2.658	0.0199
Base	20	94	Design 3 Max	14.3803	12.7618	129.7339	21.9018	33.081	1.1729
Base	20	94	Design 3 Min	-19.9333	-12.3758	-0.5605	-22.0182	-37.9999	-1.1364
Base	20	94	Design 5 Max	6.2598	25.8172	141.6414	44.48	15.0322	0.7313
Base	20	94	Design 5 Min	-9.8656	-25.569	-56.6453	-44.5508	-18.2248	-0.7081
Base	20	94	Derivas 1 Max	83.0076	63.037	390.3226	109.7418	175.2428	5.7916
Base	20	94	Derivas 1 Min	-88.5606	-62.651	-261.1492	-109.8582	-180.1616	-5.7551
Base	20	94	Derivas 2 Max	37.5371	128.6585	560.3033	222.5188	80.6831	3.6166
Base	20	94	Derivas 2 Min	-43.09	-128.2725	-431.1299	-222.6352	-85.602	-3.5801
Base	20	94	Design 6 Max	15.3539	12.6929	107.6452	21.9246	33.9441	1.1663
Base	20	94	Design 6 Min	-18.9597	-12.4447	-22.6491	-21.9954	-37.1368	-1.1431
Base	20	94	Servicio	-2.3758	0.1654	55.1427	-0.0503	-2.1047	0.0157
Base	20	94	envolvente Max	15.3539	25.8861	163.73	44.48	33.9441	1.1729
Base	20	94	envolvente Min	-19.9333	-25.569	-56.6453	-44.5736	-37.9999	-1.1431
Base	20	94	Design 4 Max	5.2862	25.8861	163.73	44.4572	14.1691	0.7379
Base	20	94	Design 4 Min	-10.8392	-25.5001	-34.5566	-44.5736	-19.0879	-0.7014
Base	20	94	Derivas 3 Max	83.9812	62.9681	368.2339	109.7646	176.1059	5.785
Base	20	94	Derivas 3 Min	-87.587	-62.7199	-283.2378	-109.8354	-179.2985	-5.7618
Base	20	94	Derivas 4 Max	38.5106	128.5896	538.2147	222.5416	81.5462	3.61
Base	20	94	Derivas 4 Min	-42.1165	-128.3414	-453.2186	-222.6124	-84.7389	-3.5868

5.4 Modal Results

Table 5.8 - Modal Periods and Frequencies

Case	Mode	Period sec	Frequenc y cyc/sec	Circular Frequenc y rad/sec	Eigenvalu e rad ² /sec ²
Modal	1	0.863	1.159	7.2791	52.986
Modal	2	0.747	1.338	8.4081	70.6961
Modal	3	0.683	1.465	9.2057	84.7458
Modal	4	0.497	2.011	12.6341	159.6198
Modal	5	0.27	3.708	23.2959	542.7004
Modal	6	0.231	4.323	27.1602	737.6785
Modal	7	0.219	4.558	28.6362	820.0337
Modal	8	0.216	4.629	29.0844	845.9024
Modal	9	0.207	4.822	30.2992	918.0406
Modal	10	0.169	5.922	37.2121	1384.7421
Modal	11	0.157	6.369	40.0174	1601.3903
Modal	12	0.066	15.184	95.4038	9101.8903

Table 5.9 - Modal Participating Mass Ratios

Case	Mode	Period sec	UX	UY	UZ	Sum UX	Sum UY	Sum UZ	RX	RY	RZ	Sum RX	Sum RY	Sum RZ
Modal	1	0.863	0.8076	3.158E-05	0	0.8076	3.158E-05	0	7.117E-07	0.0363	0.0369	7.117E-07	0.0363	0.0369
Modal	2	0.747	0.0004	0.8463	1.151E-05	0.808	0.8463	1.152E-05	0.0124	0.0001	0.0164	0.0124	0.0363	0.0533
Modal	3	0.683	0.0332	0.0174	5.754E-07	0.8412	0.8637	1.21E-05	0.0002	0.004	0.8064	0.0126	0.0403	0.8597

Case	Mode	Period sec	UX	UY	UZ	Sum UX	Sum UY	Sum UZ	RX	RY	RZ	Sum RX	Sum RY	Sum RZ
Modal	4	0.497	0	0.0002	0.0504	0.8412	0.8639	0.0504	4.468E-06	3.387E-06	0	0.0126	0.0403	0.8597
Modal	5	0.27	0.0899	0	0	0.9311	0.8639	0.0504	0	0.1208	1.255E-05	0.0126	0.1612	0.8598
Modal	6	0.231	1.551E-05	0.1081	0.0002	0.9311	0.972	0.0507	0.057	1.145E-05	0.0034	0.0696	0.1612	0.8632
Modal	7	0.219	0.0168	0.0036	7.686E-06	0.9479	0.9756	0.0507	0.0019	0.0112	0.0767	0.0715	0.1723	0.9398
Modal	8	0.216	9.91E-06	0.0165	0.0024	0.9479	0.9921	0.0531	0.0084	1.361E-05	0.0001	0.0799	0.1723	0.9399
Modal	9	0.207	0.0449	0.0012	2.808E-06	0.9929	0.9933	0.0531	0.0005	0.0393	0.0121	0.0805	0.2116	0.952
Modal	10	0.169	0.007	0.0005	4.839E-06	0.9999	0.9937	0.0531	1.293E-05	0.0052	0.0468	0.0805	0.2168	0.9988
Modal	11	0.157	0.0001	0.0062	0.0001	1	1	0.0532	0.0001	0.0001	0.0012	0.0805	0.2168	1
Modal	12	0.066	0	0	0.1154	1	1	0.1686	0.0729	1.005E-05	0	0.1535	0.2169	1

Table 5.10 - Modal Load Participation Ratios

Case	Item Type	Item	Static %	Dynamic %
Modal	Acceleration	UX	100	100
Modal	Acceleration	UY	100	100
Modal	Acceleration	UZ	89.3	16.86

Table 5.11 - Modal Direction Factors

Case	Mode	Period sec	UX	UY	UZ	RZ
Modal	1	0.863	0.954	0	0	0.046
Modal	2	0.747	0.001	0.98	0	0.019
Modal	3	0.683	0.058	0.02	0	0.922
Modal	4	0.497	0	0.003	0.997	0
Modal	5	0.27	0.965	0	0	0.035
Modal	6	0.231	0.004	0.95	0.008	0.038
Modal	7	0.219	0.408	0.028	0	0.564
Modal	8	0.216	0	0.699	0.299	0.002
Modal	9	0.207	0.485	0.011	0	0.504
Modal	10	0.169	0.124	0.048	0	0.828
Modal	11	0.157	0.004	0.944	0.001	0.052
Modal	12	0.066	0	0	1	0

	2530.93	0	0
	2361.45	97.4171	97.4171
	2089.10	125.8658	125.8658
	1778.89	155.5953	155.5953
	1397.31	189.8956	189.8956
	918.39	231.4893	231.4893
	525.46	284.0235	284.0235
	97.58	333.2069	333.2069
	-549.60	303.5226	303.5226
	-1399.44	221.0294	221.0294
	-2960.31	0	0
	2530.93	0	0
	2361.45	-97.4171	-97.4171
	2089.10	-125.8658	-125.8658
	1778.89	-155.5953	-155.5953
	1397.31	-189.8956	-189.8956
	918.39	-231.4893	-231.4893
	525.46	-284.0235	-284.0235
	97.58	-333.2069	-333.2069
	-549.60	-303.5226	-303.5226
	-1399.44	-221.0294	-221.0294
	-2960.31	0	0

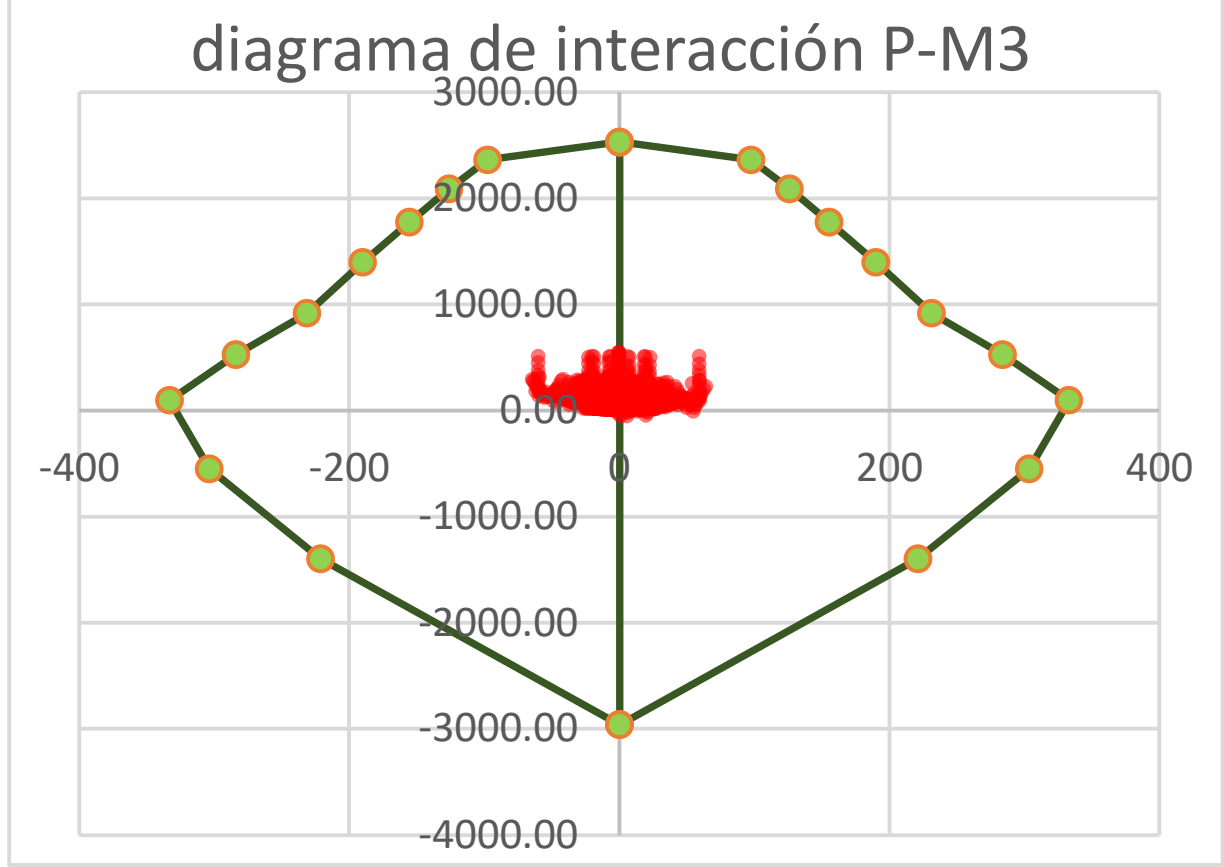
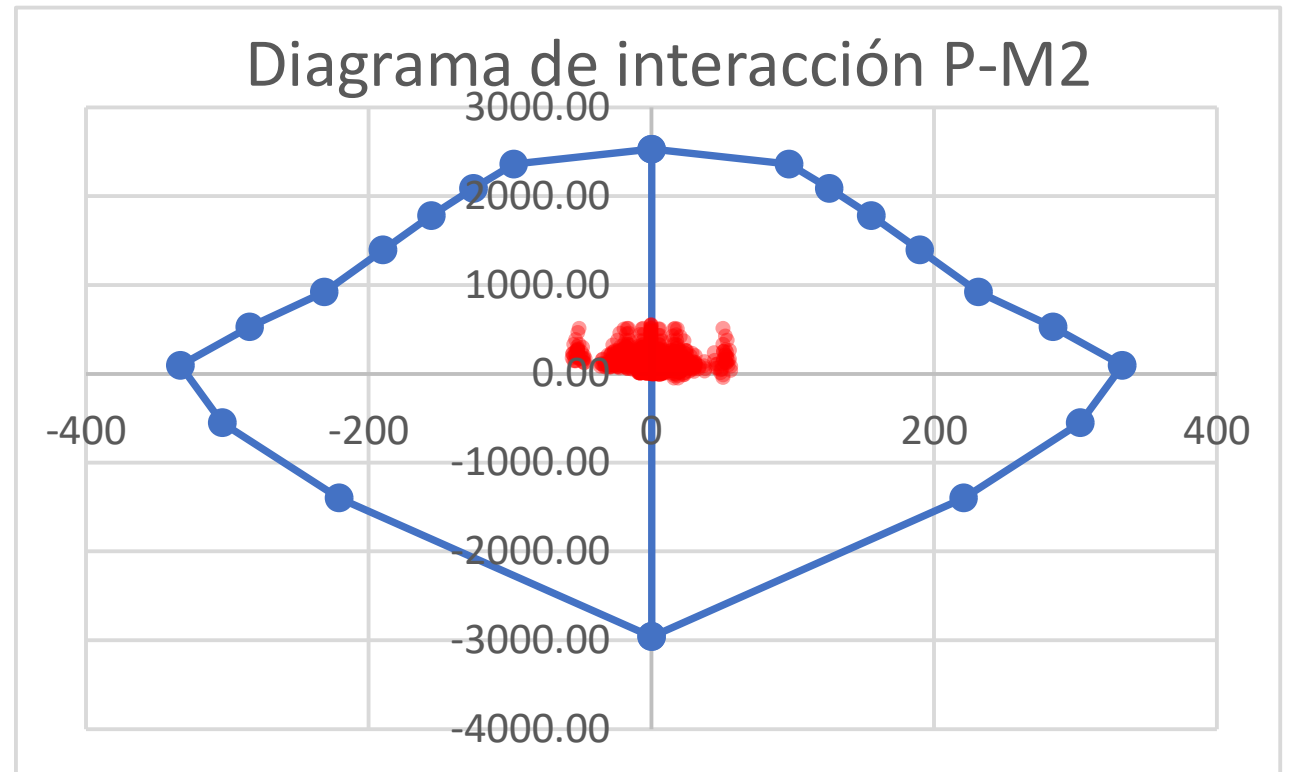


TABLE: Concrete Column Summary - ACI 318-14 MÁS INDICES DE SOBRESFUERZO

Story	Label	Unique Name	Design Section	Station	Design/Check	PMM Ratio	PMM Combo	As,min	As	V Major Combo	At V Major	V Minor Combo	At V Minor	INDICES DE SOBRESFUERZO
				mm				mm ²	mm ²		mm ² /m		mm ² /m	
Story3	C2	2	REcol(30X30)	0	Check	0.09	Design 3	1667	9221	Design 4	133.86	Design 4	86.41	0.11
Story3	C2	2	REcol(30X30)	1225	Check	0.04	Design 3	1667	9221	Design 4	133.86	Design 4	86.41	0.05
Story3	C2	2	REcol(30X30)	2450	Check	0.03	Design 3	1667	9221	Design 4	133.86	Design 4	86.41	0.04
Story3	C3	6	REcol(30X30)	0	Check	0.08	Design 3	1667	9221	Design 4	148.11	Design 4	137.72	0.11
Story3	C3	6	REcol(30X30)	1225	Check	0.04	Design 3	1667	9221	Design 4	148.11	Design 4	137.72	0.05
Story3	C3	6	REcol(30X30)	2450	Check	0.04	Design 4	1667	9221	Design 4	148.11	Design 4	137.72	0.05
Story3	C4	10	REcol(30X30)	0	Check	0.08	Design 4	1667	9221	Design 4	151.63	Design 4	141.1	0.10
Story3	C4	10	REcol(30X30)	1225	Check	0.03	Design 3	1667	9221	Design 4	151.63	Design 4	141.1	0.04
Story3	C4	10	REcol(30X30)	2450	Check	0.04	Design 4	1667	9221	Design 4	151.63	Design 4	141.1	0.05
Story3	C5	14	REcol(30X30)	0	Check	0.06	Design 4	1667	9221	Design 6	32.46	Design 4	147.02	0.08
Story3	C5	14	REcol(30X30)	1225	Check	0.03	Design 3	1667	9221	Design 6	32.46	Design 4	147.02	0.04
Story3	C5	14	REcol(30X30)	2450	Check	0.03	Design 4	1667	9221	Design 6	32.46	Design 4	147.02	0.03
Story3	C6	18	REcol(30X30)	0	Check	0.05	Design 3	1667	9221	Design 4	124.88	Design 4	97.13	0.06
Story3	C6	18	REcol(30X30)	1225	Check	0.02	Design 3	1667	9221	Design 4	124.88	Design 4	97.13	0.03
Story3	C6	18	REcol(30X30)	2450	Check	0.04	Design 3	1667	9221	Design 4	124.88	Design 4	97.13	0.04
Story3	C8	22	REcol(30X30)	0	Check	0.04	Design 3	1667	9221	Design 4	180.86	Design 4	17.41	0.05
Story3	C8	22	REcol(30X30)	1225	Check	0.01	Design 3	1667	9221	Design 4	180.86	Design 4	17.41	0.01
Story3	C8	22	REcol(30X30)	2450	Check	0.03	Design 3	1667	9221	Design 4	180.86	Design 4	17.41	0.04
Story3	C9	114	REcol(30X30)	0	Check	0.04	Design 3	1667	9221	Design 4	214.65	Design 4	87.27	0.06
Story3	C9	114	REcol(30X30)	1225	Check	0.01	Design 4	1667	9221	Design 4	214.65	Design 4	87.27	0.02
Story3	C9	114	REcol(30X30)	2450	Check	0.04	Design 3	1667	9221	Design 4	214.65	Design 4	87.27	0.05
Story3	C10	25	REcol(30X30)	0	Check	0.05	Design 3	1667	9221	Design 4	227.25	Design 4	90.08	0.06
Story3	C10	25	REcol(30X30)	1225	Check	0.01	Design 3	1667	9221	Design 4	227.25	Design 4	90.08	0.02
Story3	C10	25	REcol(30X30)	2450	Check	0.04	Design 3	1667	9221	Design 4	227.25	Design 4	90.08	0.05
Story3	C12	29	REcol(30X30)	0	Check	0.05	Design 3	1667	9221	Design 4	201.92	Design 3	25.75	0.06
Story3	C12	29	REcol(30X30)	1226.6	Check	0.01	Design 3	1667	9221	Design 4	201.92	Design 3	25.75	0.02
Story3	C12	29	REcol(30X30)	2453.3	Check	0.04	Design 3	1667	9221	Design 4	201.92	Design 3	25.75	0.04
Story3	C14	34	REcol(30X30)	0	Check	0.09	Design 3	1667	9221	Design 4	134.3	Design 4	86.65	0.12
Story3	C14	34	REcol(30X30)	1225	Check	0.04	Design 3	1667	9221	Design 4	134.3	Design 4	86.65	0.06
Story3	C14	34	REcol(30X30)	2450	Check	0.03	Design 3	1667	9221	Design 4	134.3	Design 4	86.65	0.04
Story3	C15	37	REcol(30X30)	0	Check	0.09	Design 3	1667	9221	Design 4	148.29	Design 4	137.53	0.11
Story3	C15	37	REcol(30X30)	1225	Check	0.04	Design 3	1667	9221	Design 4	148.29	Design 4	137.53	0.05
Story3	C15	37	REcol(30X30)	2450	Check	0.04	Design 4	1667	9221	Design 4	148.29	Design 4	137.53	0.05
Story3	C16	41	REcol(30X30)	0	Check	0.08	Design 4	1667	9221	Design 4	148.58	Design 4	142.56	0.10
Story3	C16	41	REcol(30X30)	1225	Check	0.03	Design 3	1667	9221	Design 4	148.58	Design 4	142.56	0.04
Story3	C16	41	REcol(30X30)	2450	Check	0.04	Design 4	1667	9221	Design 4	148.58	Design 4	142.56	0.05
Story3	C17	44	REcol(30X30)	0	Check	0.07	Design 4	1667	9221	Design 6	27.75	Design 4	161.29	0.08
Story3	C17	44	REcol(30X30)	1225	Check	0.03	Design 3	1667	9221	Design 6	27.75	Design 4	161.29	0.04
Story3	C17	44	REcol(30X30)	2450	Check	0.03	Design 4	1667	9221	Design 6	27.75	Design 4	161.29	0.04
Story3	C18	48	REcol(30X30)	0	Check	0.04	Design 3	1667	9221	Design 4	122.68	Design 4	97.54	0.05
Story3	C18	48	REcol(30X30)	1225	Check	0.02	Design 3	1667	9221	Design 4	122.68	Design 4	97.54	0.03

TABLE: Concrete Column Summary - ACI 318-14 MÁS INDICES DE SOBRESFUERZO

Story	Label	Unique Name	Design Section	Station	Design/Check	PMM Ratio	PMM Combo	As,min	As	V Major Combo	At V Major	V Minor Combo	At V Minor	INDICES DE SOBRESFUERZO
				mm				mm ²	mm ²		mm ² /m		mm ² /m	
Story3	C18	48	REcol(30X30)	2450	Check	0.03	Design 3	1667	9221	Design 4	122.68	Design 4	97.54	0.04
Story2	C1	3	REcol(30X30)	0	Check	0.11	Design 3	1667	9221	Design 4	406.99	Design 4	437.26	0.13
Story2	C1	3	REcol(30X30)	1175	Check	0.03	Design 3	1667	9221	Design 4	406.99	Design 4	437.26	0.04
Story2	C1	3	REcol(30X30)	2350	Check	0.11	Design 3	1667	9221	Design 4	406.99	Design 4	437.26	0.14
Story2	C2	7	REcol(30X30)	0	Check	0.22	Design 3	1667	9221	Design 6	454.28	Design 5	356.63	0.28
Story2	C2	7	REcol(30X30)	1175	Check	0.07	Design 3	1667	9221	Design 6	454.28	Design 5	356.63	0.09
Story2	C2	7	REcol(30X30)	2350	Check	0.21	Design 3	1667	9221	Design 6	454.28	Design 5	356.63	0.26
Story2	C3	11	REcol(30X30)	0	Check	0.21	Design 4	1667	9221	Design 6	531.49	Design 5	382.39	0.26
Story2	C3	11	REcol(30X30)	1175	Check	0.07	Design 3	1667	9221	Design 6	531.49	Design 5	382.39	0.08
Story2	C3	11	REcol(30X30)	2350	Check	0.19	Design 3	1667	9221	Design 6	531.49	Design 5	382.39	0.24
Story2	C4	15	REcol(30X30)	0	Check	0.20	Design 4	1667	9221	Design 6	490.13	Design 5	412.66	0.25
Story2	C4	15	REcol(30X30)	1175	Check	0.06	Design 3	1667	9221	Design 6	490.13	Design 5	412.66	0.07
Story2	C4	15	REcol(30X30)	2350	Check	0.18	Design 3	1667	9221	Design 6	490.13	Design 4	414.17	0.22
Story2	C5	19	REcol(30X30)	0	Check	0.19	Design 4	1667	9221	Design 6	476.24	Design 4	446.03	0.24
Story2	C5	19	REcol(30X30)	1175	Check	0.05	Design 3	1667	9221	Design 6	476.24	Design 4	446.03	0.06
Story2	C5	19	REcol(30X30)	2350	Check	0.17	Design 4	1667	9221	Design 6	476.24	Design 4	446.03	0.21
Story2	C6	23	REcol(30X30)	0	Check	0.13	Design 3	1667	9221	Design 3	426.82	Design 4	303.61	0.17
Story2	C6	23	REcol(30X30)	1175	Check	0.04	Design 3	1667	9221	Design 3	426.82	Design 4	303.61	0.05
Story2	C6	23	REcol(30X30)	2350	Check	0.13	Design 3	1667	9221	Design 3	426.82	Design 4	303.61	0.16
Story2	C7	26	REcol(30X30)	0	Check	0.22	Design 3	1667	9221	Design 6	906.13	Design 6	522.36	0.28
Story2	C7	26	REcol(30X30)	1175	Check	0.06	Design 4	1667	9221	Design 6	906.13	Design 6	522.36	0.07
Story2	C7	26	REcol(30X30)	2350	Check	0.22	Design 3	1667	9221	Design 6	906.13	Design 6	522.36	0.27
Story2	C8	30	REcol(30X30)	0	Check	0.20	Design 3	1667	9221	Design 4	255.33	Design 4	0	0.26
Story2	C8	30	REcol(30X30)	1175	Check	0.12	Design 2	1667	9221	Design 4	255.33	Design 4	0	0.15
Story2	C8	30	REcol(30X30)	2350	Check	0.19	Design 3	1667	9221	Design 4	255.33	Design 4	0	0.24
Story2	C9	164	REcol(30X30)	0	Check	0.20	Design 3	1667	9221	Design 4	255.33	Design 4	0	0.25
Story2	C9	164	REcol(30X30)	1175	Check	0.10	Design 2	1667	9221	Design 4	255.33	Design 4	0	0.13
Story2	C9	164	REcol(30X30)	2350	Check	0.18	Design 3	1667	9221	Design 4	255.33	Design 4	0	0.23
Story2	C10	35	REcol(30X30)	0	Check	0.19	Design 3	1667	9221	Design 4	255.33	Design 4	255.33	0.24
Story2	C10	35	REcol(30X30)	1175	Check	0.09	Design 2	1667	9221	Design 4	255.33	Design 4	255.33	0.11
Story2	C10	35	REcol(30X30)	2350	Check	0.17	Design 3	1667	9221	Design 4	255.33	Design 4	255.33	0.22
Story2	C11	38	REcol(30X30)	0	Check	0.19	Design 3	1667	9221	Design 6	1174.02	Design 6	692.7	0.23
Story2	C11	38	REcol(30X30)	1175	Check	0.06	Design 2	1667	9221	Design 6	1174.02	Design 6	692.7	0.08
Story2	C11	38	REcol(30X30)	2350	Check	0.18	Design 3	1667	9221	Design 6	1174.02	Design 6	692.7	0.22
Story2	C12	42	REcol(30X30)	0	Check	0.16	Design 3	1667	9221	Design 3	494.21	Design 4	331.52	0.20
Story2	C12	42	REcol(30X30)	1175	Check	0.05	Design 4	1667	9221	Design 3	494.21	Design 4	331.52	0.06
Story2	C12	42	REcol(30X30)	2350	Check	0.14	Design 3	1667	9221	Design 3	494.21	Design 4	331.52	0.18
Story2	C13	45	REcol(30X30)	0	Check	0.16	Design 3	1667	9221	Design 4	632.19	Design 4	471.71	0.20
Story2	C13	45	REcol(30X30)	1175	Check	0.04	Design 4	1667	9221	Design 4	632.19	Design 4	471.71	0.04
Story2	C13	45	REcol(30X30)	2350	Check	0.17	Design 3	1667	9221	Design 4	632.19	Design 4	471.71	0.21
Story2	C14	49	REcol(30X30)	0	Check	0.23	Design 3	1667	9221	Design 6	453.89	Design 5	357.04	0.28

TABLE: Concrete Column Summary - ACI 318-14 MÁS INDICES DE SOBRESFUERZO

Story	Label	Unique Name	Design Section	Station mm	Design/Check	PMM Ratio	PMM Combo	As,min mm ²	As mm ²	V Major Combo	At V Major mm ² /m	V Minor Combo	At V Minor mm ² /m	INDICES DE SOBRESFUERZO
Story2	C14	49	REcol(30X30)	1175	Check	0.07	Design 3	1667	9221	Design 6	453.89	Design 5	357.04	0.09
Story2	C14	49	REcol(30X30)	2350	Check	0.21	Design 3	1667	9221	Design 6	453.89	Design 5	357.04	0.26
Story2	C15	53	REcol(30X30)	0	Check	0.21	Design 4	1667	9221	Design 6	528.65	Design 5	382.62	0.26
Story2	C15	53	REcol(30X30)	1175	Check	0.07	Design 3	1667	9221	Design 6	528.65	Design 5	382.62	0.08
Story2	C15	53	REcol(30X30)	2350	Check	0.19	Design 3	1667	9221	Design 6	528.65	Design 5	382.62	0.24
Story2	C16	57	REcol(30X30)	0	Check	0.20	Design 4	1667	9221	Design 6	486.6	Design 5	413.33	0.24
Story2	C16	57	REcol(30X30)	1175	Check	0.06	Design 3	1667	9221	Design 6	486.6	Design 5	413.33	0.07
Story2	C16	57	REcol(30X30)	2350	Check	0.17	Design 3	1667	9221	Design 6	486.6	Design 4	415.07	0.22
Story2	C17	61	REcol(30X30)	0	Check	0.20	Design 4	1667	9221	Design 3	544.32	Design 4	493.92	0.25
Story2	C17	61	REcol(30X30)	1175	Check	0.05	Design 3	1667	9221	Design 3	544.32	Design 4	493.92	0.06
Story2	C17	61	REcol(30X30)	2350	Check	0.17	Design 4	1667	9221	Design 3	544.32	Design 4	493.92	0.22
Story2	C18	65	REcol(30X30)	0	Check	0.13	Design 4	1667	9221	Design 3	396.66	Design 4	330.18	0.17
Story2	C18	65	REcol(30X30)	1175	Check	0.04	Design 4	1667	9221	Design 3	396.66	Design 4	330.18	0.05
Story2	C18	65	REcol(30X30)	2350	Check	0.13	Design 4	1667	9221	Design 3	396.66	Design 4	330.18	0.16
Story1	C1	1	REcol(30X30)	0	Check	0.24	Design 3	1667	9221	Design 3	460.64	Design 5	424.88	0.30
Story1	C1	1	REcol(30X30)	1175	Check	0.12	Design 3	1667	9221	Design 3	460.64	Design 4	431.17	0.15
Story1	C1	1	REcol(30X30)	2350	Check	0.10	Design 4	1667	9221	Design 3	460.64	Design 4	431.17	0.12
Story1	C2	4	REcol(30X30)	0	Check	0.31	Design 3	1667	9221	Design 4	255.33	Design 4	255.33	0.39
Story1	C2	4	REcol(30X30)	1175	Check	0.17	Design 3	1667	9221	Design 4	255.33	Design 4	255.33	0.21
Story1	C2	4	REcol(30X30)	2350	Check	0.19	Design 3	1667	9221	Design 4	255.33	Design 4	255.33	0.23
Story1	C3	8	REcol(30X30)	0	Check	0.30	Design 3	1667	9221	Design 4	255.33	Design 4	255.33	0.38
Story1	C3	8	REcol(30X30)	1175	Check	0.16	Design 3	1667	9221	Design 4	255.33	Design 4	255.33	0.20
Story1	C3	8	REcol(30X30)	2350	Check	0.18	Design 4	1667	9221	Design 4	255.33	Design 4	255.33	0.23
Story1	C4	12	REcol(30X30)	0	Check	0.28	Design 3	1667	9221	Design 6	548.57	Design 6	412.83	0.35
Story1	C4	12	REcol(30X30)	1175	Check	0.15	Design 3	1667	9221	Design 6	548.57	Design 6	412.83	0.18
Story1	C4	12	REcol(30X30)	2350	Check	0.17	Design 4	1667	9221	Design 6	548.57	Design 6	412.83	0.21
Story1	C5	16	REcol(30X30)	0	Check	0.27	Design 3	1667	9221	Design 6	535.59	Design 5	556.37	0.34
Story1	C5	16	REcol(30X30)	1175	Check	0.14	Design 3	1667	9221	Design 6	535.59	Design 5	556.37	0.17
Story1	C5	16	REcol(30X30)	2350	Check	0.16	Design 4	1667	9221	Design 6	535.59	Design 5	556.37	0.20
Story1	C6	20	REcol(30X30)	0	Check	0.24	Design 3	1667	9221	Design 3	519.62	Design 4	459.24	0.30
Story1	C6	20	REcol(30X30)	1175	Check	0.12	Design 3	1667	9221	Design 3	519.62	Design 4	459.24	0.15
Story1	C6	20	REcol(30X30)	2350	Check	0.12	Design 4	1667	9221	Design 3	519.62	Design 4	459.24	0.15

TABLE: Concrete Column Summary - ACI 318-14 MÁS INDICES DE SOBRESFUERZO

Story	Label	Unique Name	Design Section	Station mm	Design/Check	PMM Ratio	PMM Combo	As,min mm ²	As mm ²	V Major Combo	At V Major mm ² /m	V Minor Combo	At V Minor mm ² /m	INDICES DE SOBRESFUERZO
Story1	C7	24	REcol(30X30)	0	Check	0.30	Design 3	1667	9221	Design 4	255.33	Design 4	255.33	0.38
Story1	C7	24	REcol(30X30)	1175	Check	0.15	Design 4	1667	9221	Design 4	255.33	Design 4	255.33	0.19
Story1	C7	24	REcol(30X30)	2350	Check	0.18	Design 3	1667	9221	Design 4	255.33	Design 4	255.33	0.22
Story1	C8	27	REcol(30X30)	0	Check	0.35	Design 3	1667	9221	Design 4	255.33	Design 4	255.33	0.44
Story1	C8	27	REcol(30X30)	1175	Check	0.23	Design 2	1667	9221	Design 4	255.33	Design 4	255.33	0.28
Story1	C8	27	REcol(30X30)	2350	Check	0.23	Design 3	1667	9221	Design 4	255.33	Design 4	255.33	0.29
Story1	C9	31	REcol(30X30)	0	Check	0.34	Design 3	1667	9221	Design 4	255.33	Design 4	255.33	0.43
Story1	C9	31	REcol(30X30)	1175	Check	0.20	Design 3	1667	9221	Design 4	255.33	Design 4	255.33	0.25
Story1	C9	31	REcol(30X30)	2350	Check	0.21	Design 4	1667	9221	Design 4	255.33	Design 4	255.33	0.27
Story1	C10	32	REcol(30X30)	0	Check	0.32	Design 3	1667	9221	Design 4	255.33	Design 4	255.33	0.40
Story1	C10	32	REcol(30X30)	1175	Check	0.18	Design 3	1667	9221	Design 4	255.33	Design 4	255.33	0.22
Story1	C10	32	REcol(30X30)	2350	Check	0.19	Design 4	1667	9221	Design 4	255.33	Design 4	255.33	0.24
Story1	C11	36	REcol(30X30)	0	Check	0.30	Design 3	1667	9221	Design 4	255.33	Design 4	255.33	0.38
Story1	C11	36	REcol(30X30)	1175	Check	0.15	Design 3	1667	9221	Design 4	255.33	Design 4	255.33	0.19
Story1	C11	36	REcol(30X30)	2350	Check	0.19	Design 4	1667	9221	Design 4	255.33	Design 4	255.33	0.23
Story1	C12	39	REcol(30X30)	0	Check	0.26	Design 3	1667	9221	Design 6	576.81	Design 5	472.35	0.33
Story1	C12	39	REcol(30X30)	1175	Check	0.13	Design 4	1667	9221	Design 6	576.81	Design 5	472.35	0.16
Story1	C12	39	REcol(30X30)	2350	Check	0.14	Design 3	1667	9221	Design 6	576.81	Design 4	474.51	0.17
Story1	C13	43	REcol(30X30)	0	Check	0.25	Design 3	1667	9221	Design 6	514.24	Design 5	417.21	0.32
Story1	C13	43	REcol(30X30)	1175	Check	0.13	Design 3	1667	9221	Design 3	551.83	Design 5	417.21	0.16
Story1	C13	43	REcol(30X30)	2350	Check	0.12	Design 3	1667	9221	Design 3	551.83	Design 5	417.21	0.15
Story1	C14	46	REcol(30X30)	0	Check	0.31	Design 3	1667	9221	Design 4	255.33	Design 4	255.33	0.39
Story1	C14	46	REcol(30X30)	1175	Check	0.17	Design 3	1667	9221	Design 4	255.33	Design 4	255.33	0.21
Story1	C14	46	REcol(30X30)	2350	Check	0.19	Design 3	1667	9221	Design 4	255.33	Design 4	255.33	0.23
Story1	C15	50	REcol(30X30)	0	Check	0.30	Design 3	1667	9221	Design 4	255.33	Design 4	255.33	0.38
Story1	C15	50	REcol(30X30)	1175	Check	0.16	Design 3	1667	9221	Design 4	255.33	Design 4	255.33	0.20
Story1	C15	50	REcol(30X30)	2350	Check	0.18	Design 4	1667	9221	Design 4	255.33	Design 4	255.33	0.23
Story1	C16	54	REcol(30X30)	0	Check	0.28	Design 3	1667	9221	Design 6	548.62	Design 6	412.83	0.35
Story1	C16	54	REcol(30X30)	1175	Check	0.15	Design 3	1667	9221	Design 6	548.62	Design 6	412.83	0.18
Story1	C16	54	REcol(30X30)	2350	Check	0.17	Design 4	1667	9221	Design 6	548.62	Design 6	412.83	0.21
Story1	C17	58	REcol(30X30)	0	Check	0.28	Design 4	1667	9221	Design 6	526.76	Design 4	589.74	0.35
Story1	C17	58	REcol(30X30)	1175	Check	0.13	Design 3	1667	9221	Design 6	526.76	Design 4	589.74	0.17
Story1	C17	58	REcol(30X30)	2350	Check	0.18	Design 4	1667	9221	Design 3	570.8	Design 4	589.74	0.22
Story1	C18	62	REcol(30X30)	0	Check	0.25	Design 4	1667	9221	Design 3	507.25	Design 5	485.92	0.31
Story1	C18	62	REcol(30X30)	1175	Check	0.12	Design 3	1667	9221	Design 3	507.25	Design 5	485.92	0.15
Story1	C18	62	REcol(30X30)	2350	Check	0.13	Design 4	1667	9221	Design 3	507.25	Design 5	485.92	0.16

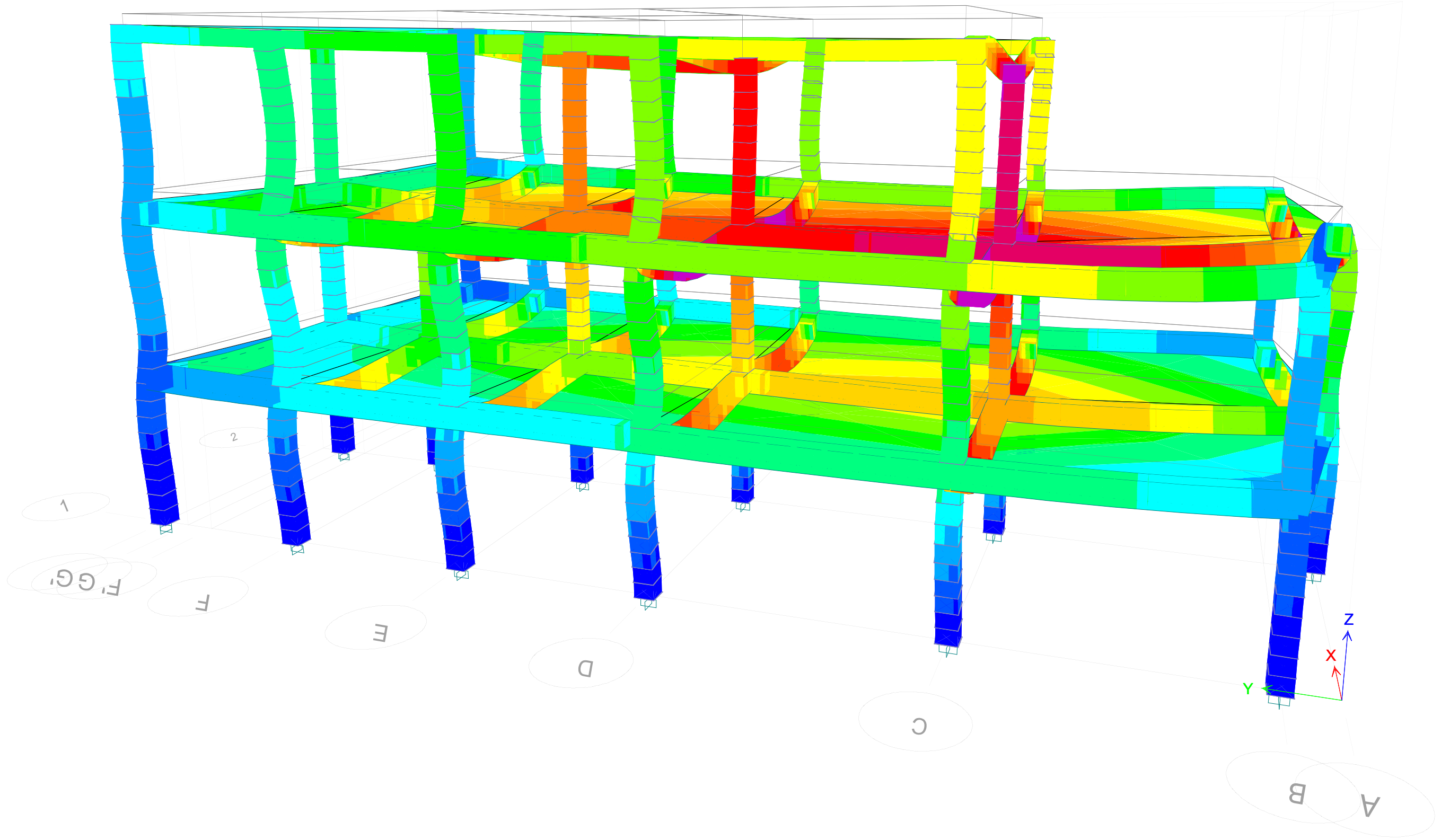


TABLE: Joint Drifts

Story	Label	Unique Name	Load Case/Combo	Displacement X	Displacement Y	Drift X	Drift Y	Drift RESULT
				m	m			
Story3	2	7	Derivas 1 Max	0.059115	0.015366	0.56%	0.12%	0.57%
Story3	2	7	Derivas 1 Min	-0.05917	-0.015513	0.56%	0.13%	0.58%
Story3	2	7	Derivas 2 Max	0.019566	0.045098	0.19%	0.35%	0.40%
Story3	2	7	Derivas 2 Min	-0.019621	-0.045245	0.19%	0.36%	0.40%
Story3	5	12	Derivas 1 Max	0.059115	0.015366	0.56%	0.12%	0.57%
Story3	5	12	Derivas 1 Min	-0.05917	-0.015513	0.56%	0.13%	0.58%
Story3	5	12	Derivas 2 Max	0.019566	0.045098	0.19%	0.35%	0.40%
Story3	5	12	Derivas 2 Min	-0.019621	-0.045245	0.19%	0.36%	0.40%
Story3	6	17	Derivas 1 Max	0.059115	0.015366	0.56%	0.12%	0.57%
Story3	6	17	Derivas 1 Min	-0.05917	-0.015513	0.56%	0.13%	0.58%
Story3	6	17	Derivas 2 Max	0.019566	0.045098	0.19%	0.35%	0.40%
Story3	6	17	Derivas 2 Min	-0.019621	-0.045245	0.19%	0.36%	0.40%
Story3	7	22	Derivas 1 Max	0.059115	0.015366	0.56%	0.12%	0.57%
Story3	7	22	Derivas 1 Min	-0.05917	-0.015513	0.56%	0.13%	0.58%
Story3	7	22	Derivas 2 Max	0.019566	0.045098	0.19%	0.35%	0.40%
Story3	7	22	Derivas 2 Min	-0.019621	-0.045245	0.19%	0.36%	0.40%
Story3	8	27	Derivas 1 Max	0.059115	0.015366	0.56%	0.12%	0.57%
Story3	8	27	Derivas 1 Min	-0.05917	-0.015513	0.56%	0.13%	0.58%
Story3	8	27	Derivas 2 Max	0.019566	0.045098	0.19%	0.35%	0.40%
Story3	8	27	Derivas 2 Min	-0.019621	-0.045245	0.19%	0.36%	0.40%
Story3	10	36	Derivas 1 Max	0.059115	0.015366	0.56%	0.12%	0.57%
Story3	10	36	Derivas 1 Min	-0.05917	-0.015513	0.56%	0.13%	0.58%
Story3	10	36	Derivas 2 Max	0.019566	0.045098	0.19%	0.35%	0.40%
Story3	10	36	Derivas 2 Min	-0.019621	-0.045245	0.19%	0.36%	0.40%
Story3	11	85	Derivas 1 Max	0.059115	0.015366	0.56%	0.12%	0.57%
Story3	11	85	Derivas 1 Min	-0.05917	-0.015513	0.56%	0.13%	0.58%
Story3	11	85	Derivas 2 Max	0.019566	0.045098	0.19%	0.35%	0.40%
Story3	11	85	Derivas 2 Min	-0.019621	-0.045245	0.19%	0.36%	0.40%
Story3	12	43	Derivas 1 Max	0.059115	0.015366	0.56%	0.12%	0.57%
Story3	12	43	Derivas 1 Min	-0.05917	-0.015513	0.56%	0.13%	0.58%
Story3	12	43	Derivas 2 Max	0.019566	0.045098	0.19%	0.35%	0.40%
Story3	12	43	Derivas 2 Min	-0.019621	-0.045245	0.19%	0.36%	0.40%
Story3	14	52	Derivas 1 Max	0.059115	0.015366	0.56%	0.12%	0.57%
Story3	14	52	Derivas 1 Min	-0.05917	-0.015513	0.56%	0.13%	0.58%
Story3	14	52	Derivas 2 Max	0.019566	0.045098	0.19%	0.35%	0.40%
Story3	14	52	Derivas 2 Min	-0.019621	-0.045245	0.19%	0.36%	0.40%
Story3	16	61	Derivas 1 Max	0.059115	0.015366	0.56%	0.12%	0.57%
Story3	16	61	Derivas 1 Min	-0.05917	-0.015513	0.56%	0.13%	0.58%
Story3	16	61	Derivas 2 Max	0.019566	0.045098	0.19%	0.35%	0.40%
Story3	16	61	Derivas 2 Min	-0.019621	-0.045245	0.19%	0.36%	0.40%
Story3	17	66	Derivas 1 Max	0.059115	0.015366	0.56%	0.12%	0.57%
Story3	17	66	Derivas 1 Min	-0.05917	-0.015513	0.56%	0.13%	0.58%
Story3	17	66	Derivas 2 Max	0.019566	0.045098	0.19%	0.35%	0.40%
Story3	17	66	Derivas 2 Min	-0.019621	-0.045245	0.19%	0.36%	0.40%
Story3	18	71	Derivas 1 Max	0.059115	0.015366	0.56%	0.12%	0.57%
Story3	18	71	Derivas 1 Min	-0.05917	-0.015513	0.56%	0.13%	0.58%
Story3	18	71	Derivas 2 Max	0.019566	0.045098	0.19%	0.35%	0.40%
Story3	18	71	Derivas 2 Min	-0.019621	-0.045245	0.19%	0.36%	0.40%
Story3	19	76	Derivas 1 Max	0.059115	0.015366	0.56%	0.12%	0.57%
Story3	19	76	Derivas 1 Min	-0.05917	-0.015513	0.56%	0.13%	0.58%
Story3	19	76	Derivas 2 Max	0.019566	0.045098	0.19%	0.35%	0.40%
Story3	19	76	Derivas 2 Min	-0.019621	-0.045245	0.19%	0.36%	0.40%
Story3	20	81	Derivas 1 Max	0.059115	0.015366	0.56%	0.12%	0.57%

TABLE: Joint Drifts

Story	Label	Unique Name	Load Case/Combo	Displacement X	Displacement Y	Drift X	Drift Y	Drift RESULT
				m	m			
Story3	20	81	Derivas 1 Min	-0.05917	-0.015513	0.56%	0.13%	0.58%
Story3	20	81	Derivas 2 Max	0.019566	0.045098	0.19%	0.35%	0.40%
Story3	20	81	Derivas 2 Min	-0.019621	-0.045245	0.19%	0.36%	0.40%
Story2	1	4	Derivas 1 Max	0.044293	0.01217	0.91%	0.24%	0.94%
Story2	1	4	Derivas 1 Min	-0.044347	-0.012189	0.91%	0.24%	0.94%
Story2	1	4	Derivas 2 Max	0.014688	0.035862	0.30%	0.70%	0.76%
Story2	1	4	Derivas 2 Min	-0.014742	-0.035882	0.30%	0.70%	0.76%
Story2	2	9	Derivas 1 Max	0.044293	0.01217	0.91%	0.24%	0.94%
Story2	2	9	Derivas 1 Min	-0.044347	-0.012189	0.91%	0.24%	0.94%
Story2	2	9	Derivas 2 Max	0.014688	0.035862	0.30%	0.70%	0.76%
Story2	2	9	Derivas 2 Min	-0.014742	-0.035882	0.30%	0.70%	0.76%
Story2	5	14	Derivas 1 Max	0.044293	0.01217	0.91%	0.24%	0.94%
Story2	5	14	Derivas 1 Min	-0.044347	-0.012189	0.91%	0.24%	0.94%
Story2	5	14	Derivas 2 Max	0.014688	0.035862	0.30%	0.70%	0.76%
Story2	5	14	Derivas 2 Min	-0.014742	-0.035882	0.30%	0.70%	0.76%
Story2	6	19	Derivas 1 Max	0.044293	0.01217	0.91%	0.24%	0.94%
Story2	6	19	Derivas 1 Min	-0.044347	-0.012189	0.91%	0.24%	0.94%
Story2	6	19	Derivas 2 Max	0.014688	0.035862	0.30%	0.70%	0.76%
Story2	6	19	Derivas 2 Min	-0.014742	-0.035882	0.30%	0.70%	0.76%
Story2	7	24	Derivas 1 Max	0.044293	0.01217	0.91%	0.24%	0.94%
Story2	7	24	Derivas 1 Min	-0.044347	-0.012189	0.91%	0.24%	0.94%
Story2	7	24	Derivas 2 Max	0.014688	0.035862	0.30%	0.70%	0.76%
Story2	7	24	Derivas 2 Min	-0.014742	-0.035882	0.30%	0.70%	0.76%
Story2	8	29	Derivas 1 Max	0.044293	0.01217	0.91%	0.24%	0.94%
Story2	8	29	Derivas 1 Min	-0.044347	-0.012189	0.91%	0.24%	0.94%
Story2	8	29	Derivas 2 Max	0.014688	0.035862	0.30%	0.70%	0.76%
Story2	8	29	Derivas 2 Min	-0.014742	-0.035882	0.30%	0.70%	0.76%
Story2	9	33	Derivas 1 Max	0.044293	0.01217	0.91%	0.24%	0.94%
Story2	9	33	Derivas 1 Min	-0.044347	-0.012189	0.91%	0.24%	0.94%
Story2	9	33	Derivas 2 Max	0.014688	0.035862	0.30%	0.70%	0.76%
Story2	9	33	Derivas 2 Min	-0.014742	-0.035882	0.30%	0.70%	0.76%
Story2	10	38	Derivas 1 Max	0.044293	0.01217	0.91%	0.24%	0.94%
Story2	10	38	Derivas 1 Min	-0.044347	-0.012189	0.91%	0.24%	0.94%
Story2	10	38	Derivas 2 Max	0.014688	0.035862	0.30%	0.70%	0.76%
Story2	10	38	Derivas 2 Min	-0.014742	-0.035882	0.30%	0.70%	0.76%
Story2	11	86	Derivas 1 Max	0.044293	0.01217	0.91%	0.24%	0.94%
Story2	11	86	Derivas 1 Min	-0.044347	-0.012189	0.91%	0.24%	0.94%
Story2	11	86	Derivas 2 Max	0.014688	0.035862	0.30%	0.70%	0.76%
Story2	11	86	Derivas 2 Min	-0.014742	-0.035882	0.30%	0.70%	0.76%
Story2	12	45	Derivas 1 Max	0.044293	0.01217	0.91%	0.24%	0.94%
Story2	12	45	Derivas 1 Min	-0.044347	-0.012189	0.91%	0.24%	0.94%
Story2	12	45	Derivas 2 Max	0.014688	0.035862	0.30%	0.70%	0.76%
Story2	12	45	Derivas 2 Min	-0.014742	-0.035882	0.30%	0.70%	0.76%
Story2	13	49	Derivas 1 Max	0.044293	0.01217	0.91%	0.24%	0.94%
Story2	13	49	Derivas 1 Min	-0.044347	-0.012189	0.91%	0.24%	0.94%
Story2	13	49	Derivas 2 Max	0.014688	0.035862	0.30%	0.70%	0.76%
Story2	13	49	Derivas 2 Min	-0.014742	-0.035882	0.30%	0.70%	0.76%
Story2	14	54	Derivas 1 Max	0.044293	0.01217	0.91%	0.24%	0.94%
Story2	14	54	Derivas 1 Min	-0.044347	-0.012189	0.91%	0.24%	0.94%
Story2	14	54	Derivas 2 Max	0.014688	0.035862	0.30%	0.70%	0.76%
Story2	14	54	Derivas 2 Min	-0.014742	-0.035882	0.30%	0.70%	0.76%
Story2	15	58	Derivas 1 Max	0.044293	0.01217	0.91%	0.24%	0.94%
Story2	15	58	Derivas 1 Min	-0.044347	-0.012189	0.91%	0.24%	0.94%

TABLE: Joint Drifts

Story	Label	Unique Name	Load Case/Combo	Displacement X	Displacement Y	Drift X	Drift Y	Drift RESULT
				m	m			
Story2	15	58	Derivas 2 Max	0.014688	0.035862	0.30%	0.70%	0.76%
Story2	15	58	Derivas 2 Min	-0.014742	-0.035882	0.30%	0.70%	0.76%
Story2	16	63	Derivas 1 Max	0.044293	0.01217	0.91%	0.24%	0.94%
Story2	16	63	Derivas 1 Min	-0.044347	-0.012189	0.91%	0.24%	0.94%
Story2	16	63	Derivas 2 Max	0.014688	0.035862	0.30%	0.70%	0.76%
Story2	16	63	Derivas 2 Min	-0.014742	-0.035882	0.30%	0.70%	0.76%
Story2	17	68	Derivas 1 Max	0.044293	0.01217	0.91%	0.24%	0.94%
Story2	17	68	Derivas 1 Min	-0.044347	-0.012189	0.91%	0.24%	0.94%
Story2	17	68	Derivas 2 Max	0.014688	0.035862	0.30%	0.70%	0.76%
Story2	17	68	Derivas 2 Min	-0.014742	-0.035882	0.30%	0.70%	0.76%
Story2	18	73	Derivas 1 Max	0.044293	0.01217	0.91%	0.24%	0.94%
Story2	18	73	Derivas 1 Min	-0.044347	-0.012189	0.91%	0.24%	0.94%
Story2	18	73	Derivas 2 Max	0.014688	0.035862	0.30%	0.70%	0.76%
Story2	18	73	Derivas 2 Min	-0.014742	-0.035882	0.30%	0.70%	0.76%
Story2	19	78	Derivas 1 Max	0.044293	0.01217	0.91%	0.24%	0.94%
Story2	19	78	Derivas 1 Min	-0.044347	-0.012189	0.91%	0.24%	0.94%
Story2	19	78	Derivas 2 Max	0.014688	0.035862	0.30%	0.70%	0.76%
Story2	19	78	Derivas 2 Min	-0.014742	-0.035882	0.30%	0.70%	0.76%
Story2	20	83	Derivas 1 Max	0.044293	0.01217	0.91%	0.24%	0.94%
Story2	20	83	Derivas 1 Min	-0.044347	-0.012189	0.91%	0.24%	0.94%
Story2	20	83	Derivas 2 Max	0.014688	0.035862	0.30%	0.70%	0.76%
Story2	20	83	Derivas 2 Min	-0.014742	-0.035882	0.30%	0.70%	0.76%
Story1	1	2	Derivas 1 Max	0.019917	0.005777	0.74%	0.21%	0.77%
Story1	1	2	Derivas 1 Min	-0.019927	-0.005785	0.74%	0.21%	0.77%
Story1	1	2	Derivas 2 Max	0.006623	0.017103	0.25%	0.63%	0.68%
Story1	1	2	Derivas 2 Min	-0.006634	-0.017111	0.25%	0.63%	0.68%
Story1	2	6	Derivas 1 Max	0.019917	0.005777	0.74%	0.21%	0.77%
Story1	2	6	Derivas 1 Min	-0.019927	-0.005785	0.74%	0.21%	0.77%
Story1	2	6	Derivas 2 Max	0.006623	0.017103	0.25%	0.63%	0.68%
Story1	2	6	Derivas 2 Min	-0.006634	-0.017111	0.25%	0.63%	0.68%
Story1	5	11	Derivas 1 Max	0.019917	0.005777	0.74%	0.21%	0.77%
Story1	5	11	Derivas 1 Min	-0.019927	-0.005785	0.74%	0.21%	0.77%
Story1	5	11	Derivas 2 Max	0.006623	0.017103	0.25%	0.63%	0.68%
Story1	5	11	Derivas 2 Min	-0.006634	-0.017111	0.25%	0.63%	0.68%
Story1	6	16	Derivas 1 Max	0.019917	0.005777	0.74%	0.21%	0.77%
Story1	6	16	Derivas 1 Min	-0.019927	-0.005785	0.74%	0.21%	0.77%
Story1	6	16	Derivas 2 Max	0.006623	0.017103	0.25%	0.63%	0.68%
Story1	6	16	Derivas 2 Min	-0.006634	-0.017111	0.25%	0.63%	0.68%
Story1	7	21	Derivas 1 Max	0.019917	0.005777	0.74%	0.21%	0.77%
Story1	7	21	Derivas 1 Min	-0.019927	-0.005785	0.74%	0.21%	0.77%
Story1	7	21	Derivas 2 Max	0.006623	0.017103	0.25%	0.63%	0.68%
Story1	7	21	Derivas 2 Min	-0.006634	-0.017111	0.25%	0.63%	0.68%
Story1	8	26	Derivas 1 Max	0.019917	0.005777	0.74%	0.21%	0.77%
Story1	8	26	Derivas 1 Min	-0.019927	-0.005785	0.74%	0.21%	0.77%
Story1	8	26	Derivas 2 Max	0.006623	0.017103	0.25%	0.63%	0.68%
Story1	8	26	Derivas 2 Min	-0.006634	-0.017111	0.25%	0.63%	0.68%
Story1	9	31	Derivas 1 Max	0.019917	0.005777	0.74%	0.21%	0.77%
Story1	9	31	Derivas 1 Min	-0.019927	-0.005785	0.74%	0.21%	0.77%
Story1	9	31	Derivas 2 Max	0.006623	0.017103	0.25%	0.63%	0.68%
Story1	9	31	Derivas 2 Min	-0.006634	-0.017111	0.25%	0.63%	0.68%
Story1	10	35	Derivas 1 Max	0.019917	0.005777	0.74%	0.21%	0.77%
Story1	10	35	Derivas 1 Min	-0.019927	-0.005785	0.74%	0.21%	0.77%
Story1	10	35	Derivas 2 Max	0.006623	0.017103	0.25%	0.63%	0.68%

TABLE: Joint Drifts								
Story	Label	Unique Name	Load Case/Combo	Displacement X	Displacement Y	Drift X	Drift Y	Drift RESULT
				m	m			
Story1	10	35	Derivas 2 Min	-0.006634	-0.017111	0.25%	0.63%	0.68%
Story1	11	40	Derivas 1 Max	0.019917	0.005777	0.74%	0.21%	0.77%
Story1	11	40	Derivas 1 Min	-0.019927	-0.005785	0.74%	0.21%	0.77%
Story1	11	40	Derivas 2 Max	0.006623	0.017103	0.25%	0.63%	0.68%
Story1	11	40	Derivas 2 Min	-0.006634	-0.017111	0.25%	0.63%	0.68%
Story1	12	42	Derivas 1 Max	0.019917	0.005777	0.74%	0.21%	0.77%
Story1	12	42	Derivas 1 Min	-0.019927	-0.005785	0.74%	0.21%	0.77%
Story1	12	42	Derivas 2 Max	0.006623	0.017103	0.25%	0.63%	0.68%
Story1	12	42	Derivas 2 Min	-0.006634	-0.017111	0.25%	0.63%	0.68%
Story1	13	47	Derivas 1 Max	0.019917	0.005777	0.74%	0.21%	0.77%
Story1	13	47	Derivas 1 Min	-0.019927	-0.005785	0.74%	0.21%	0.77%
Story1	13	47	Derivas 2 Max	0.006623	0.017103	0.25%	0.63%	0.68%
Story1	13	47	Derivas 2 Min	-0.006634	-0.017111	0.25%	0.63%	0.68%
Story1	14	51	Derivas 1 Max	0.019917	0.005777	0.74%	0.21%	0.77%
Story1	14	51	Derivas 1 Min	-0.019927	-0.005785	0.74%	0.21%	0.77%
Story1	14	51	Derivas 2 Max	0.006623	0.017103	0.25%	0.63%	0.68%
Story1	14	51	Derivas 2 Min	-0.006634	-0.017111	0.25%	0.63%	0.68%
Story1	15	56	Derivas 1 Max	0.019917	0.005777	0.74%	0.21%	0.77%
Story1	15	56	Derivas 1 Min	-0.019927	-0.005785	0.74%	0.21%	0.77%
Story1	15	56	Derivas 2 Max	0.006623	0.017103	0.25%	0.63%	0.68%
Story1	15	56	Derivas 2 Min	-0.006634	-0.017111	0.25%	0.63%	0.68%
Story1	16	60	Derivas 1 Max	0.019917	0.005777	0.74%	0.21%	0.77%
Story1	16	60	Derivas 1 Min	-0.019927	-0.005785	0.74%	0.21%	0.77%
Story1	16	60	Derivas 2 Max	0.006623	0.017103	0.25%	0.63%	0.68%
Story1	16	60	Derivas 2 Min	-0.006634	-0.017111	0.25%	0.63%	0.68%
Story1	17	65	Derivas 1 Max	0.019917	0.005777	0.74%	0.21%	0.77%
Story1	17	65	Derivas 1 Min	-0.019927	-0.005785	0.74%	0.21%	0.77%
Story1	17	65	Derivas 2 Max	0.006623	0.017103	0.25%	0.63%	0.68%
Story1	17	65	Derivas 2 Min	-0.006634	-0.017111	0.25%	0.63%	0.68%
Story1	18	70	Derivas 1 Max	0.019917	0.005777	0.74%	0.21%	0.77%
Story1	18	70	Derivas 1 Min	-0.019927	-0.005785	0.74%	0.21%	0.77%
Story1	18	70	Derivas 2 Max	0.006623	0.017103	0.25%	0.63%	0.68%
Story1	18	70	Derivas 2 Min	-0.006634	-0.017111	0.25%	0.63%	0.68%
Story1	19	75	Derivas 1 Max	0.019917	0.005777	0.74%	0.21%	0.77%
Story1	19	75	Derivas 1 Min	-0.019927	-0.005785	0.74%	0.21%	0.77%
Story1	19	75	Derivas 2 Max	0.006623	0.017103	0.25%	0.63%	0.68%
Story1	19	75	Derivas 2 Min	-0.006634	-0.017111	0.25%	0.63%	0.68%
Story1	20	80	Derivas 1 Max	0.019917	0.005777	0.74%	0.21%	0.77%
Story1	20	80	Derivas 1 Min	-0.019927	-0.005785	0.74%	0.21%	0.77%
Story1	20	80	Derivas 2 Max	0.006623	0.017103	0.25%	0.63%	0.68%
Story1	20	80	Derivas 2 Min	-0.006634	-0.017111	0.25%	0.63%	0.68%

