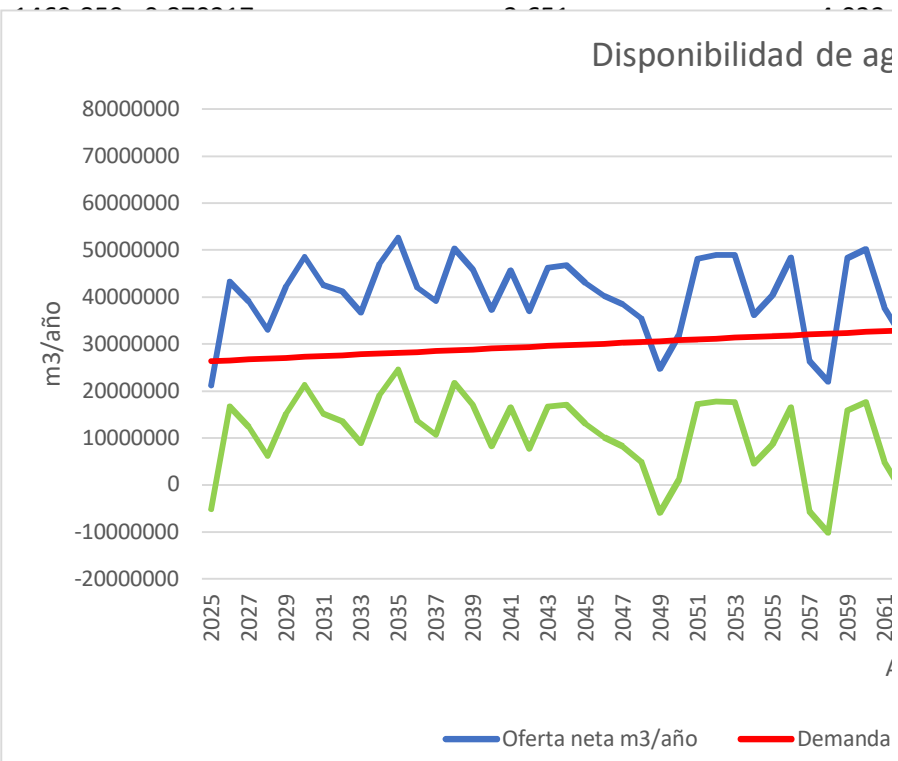


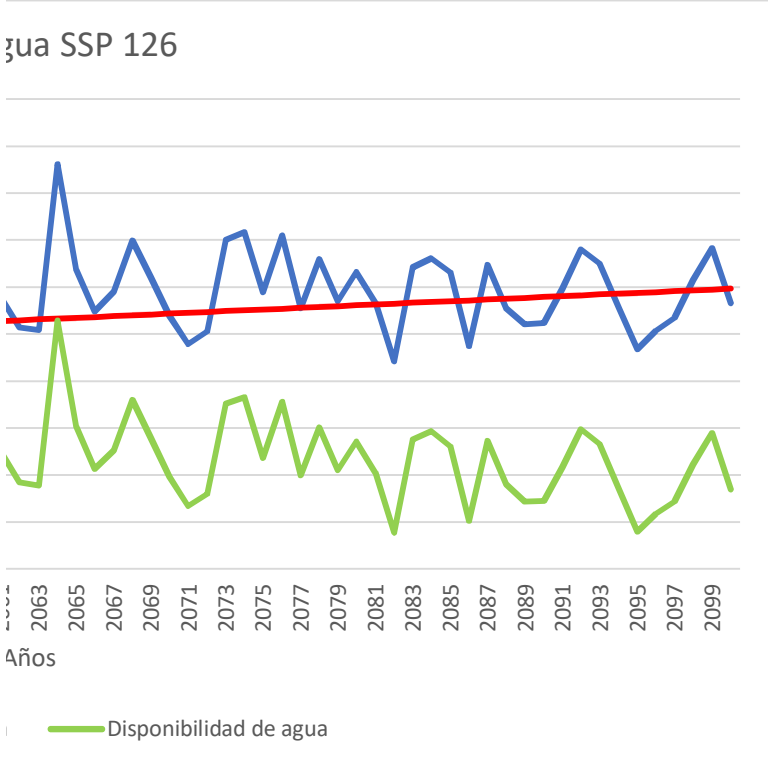
Año	Vp	Vt	IRH	Caudal_Ambiental m3/s	Oferta total m3/s
2025	1082.685	1212.473	0.892956	2.646	3.318
2026	1279.096				
2027	1492.002				
2028	1300.864				
2029	1434.67				
2030	1617.806				
2031	1443.787				
2032	1570.392				
2033	1474.341				
2034	1483.723				
2035	1612.683				
2036	1519.077				
2037	1469.496				
2038	1540.216				
2039	1616.667				
2040	1411.023				
2041	1402.084				
2042	1370.046				
2043	1604.18				
2044	1550.394				
2045	1598.924				
2046	1491.9	1703.693	0.875686	3.388	4.666
2047	1313.057	1501.604	0.874436	2.892	4.111
2048	1383.281	1565.798	0.883435	3.163	4.286
2049	1267.356	1401.431	0.90433	3.057	3.839
2050	1222.608	1377.304	0.887682	2.755	3.769
2051	1376.543	1581.961	0.87015	2.806	4.334
2052	1695.483	1952.846	0.868211	3.800	5.351
2053	1635.71	1891.599	0.864723	3.629	5.183
2054	1420.23	1600.207	0.887529	3.235	4.379
2055	1430.351	1624.231	0.880633	3.169	4.447
2056	1636.152	1882.738	0.869028	3.632	5.169
2057	1210.06	1344.934	0.899718	2.847	3.681
2058	1137.465	1255.794	0.905774	2.740	3.438
2059	1348.369	1557.506	0.865723	2.735	4.264
2060	1549.628	1772.647	0.874189	3.259	4.852
2061	1504.838	1690.453	0.890198	3.431	4.627
2062	1323.503	1501.809	0.881273	3.117	4.112
2063	1152.675	1301.405	0.885716	2.582	3.560
2064	1522.45	1789.502	0.850767	2.794	4.892
2065	1511.568	1731.794	0.872834	3.351	4.740
2066	1405.356	1592.995	0.88221	3.255	4.360
2067	1454.425	1651.211	0.880824	3.282	4.521



2068	1588.508	1838.513	0.864018	3.448	5.032
2069	1484.141	1702.485	0.87175	3.330	4.661
2070	1354.833	1529.736	0.885665	3.118	4.190
2071	1196.502	1346.472	0.88862	2.802	3.684
2072	1247.832	1397.889	0.892655	2.854	3.825
2073	1542.993	1779.892	0.866903	3.285	4.870
2074	1621.623	1894.518	0.855956	3.550	5.187
2075	1488.809	1682.751	0.884747	3.373	4.605
2076	1657.064	1923.563	0.861455	3.650	5.269
2077	1338.292	1540.29	0.868857	3.095	4.220
2078	1375.62	1560.918	0.881289	2.817	4.273
2079	1415.464	1597.71	0.885933	3.205	4.377
2080	1493.143	1713.108	0.871599	3.316	4.686
2081	1410.424	1596.277	0.883571	3.209	4.375
2082	1131.261	1262.236	0.896236	2.688	3.454
2083	1374.257	1554.403	0.884106	2.850	4.252
2084	1531.342	1768.701	0.8658	3.381	4.842
2085	1485.681	1703.435	0.872168	3.297	4.662
2086	1266.813	1414.504	0.895588	3.003	3.874
2087	1438.222	1667.44	0.862533	3.153	4.570
2088	1335.795	1525.863	0.875436	3.049	4.175
2089	1360.607	1536.523	0.885511	3.190	4.205
2090	1277.949	1437.89	0.888767	2.912	3.937
2091	1429.129	1648.366	0.866998	3.250	4.510
2092	1567.158	1804.418	0.868512	3.423	4.943
2093	1498.5	1702.346	0.880256	3.233	4.661
2094	1429.447	1606.144	0.889987	3.268	4.397
2095	1279.597	1424.15	0.898498	3.054	3.900
2096	1287.632	1442.36	0.892726	2.984	3.956
2097	1258.456	1429.806	0.880159	2.856	3.916
2098	1408.204	1606.06	0.876807	3.080	4.395
2099	1604.18	1837.426	0.873058	3.497	5.029
2100	1402.873	1604.326	0.874431	3.242	4.403

Caudal_Ambiental m3/año	Oferta total m3/año	Oferta neta m3/año	Demanda
83457683.670	104644215.931	21186532	26371215

agua SSP 126



106858740.700	147145064.699	40286324	30091461
91188022.489	129650141.217	38462119	30268616
99754507.095	135172719.857	35418213	30445771
96410166.451	121082032.269	24671866	30622925
86888642.094	118872459.353	31983817	30800080
88493682.907	136680511.767	48186829	30977234
119823030.720	168752210.877	48929180	31154389
114459067.025	163450332.565	48991266	31331543
102013099.115	138103289.677	36090191	31508698
99924199.711	140251784.248	40327585	31685853
114544340.088	162996733.602	48452394	31863007
89787480.462	116092230.341	26304750	32040162
86412613.106	108430527.431	22017914	32217316
86242277.477	134483751.288	48241474	32394471
102787163.067	153022177.741	50235015	32571625
108191697.701	145921874.367	37730177	32748780
98290499.070	129679666.332	31389167	32925935
81427969.942	112279005.726	30851036	33103089
88103651.167	154276873.232	66173222	33280244
105668250.237	149481645.387	43813395	33457398
102660196.078	137506333.361	34846137	33634553
103506093.253	142571067.861	39064975	33811707

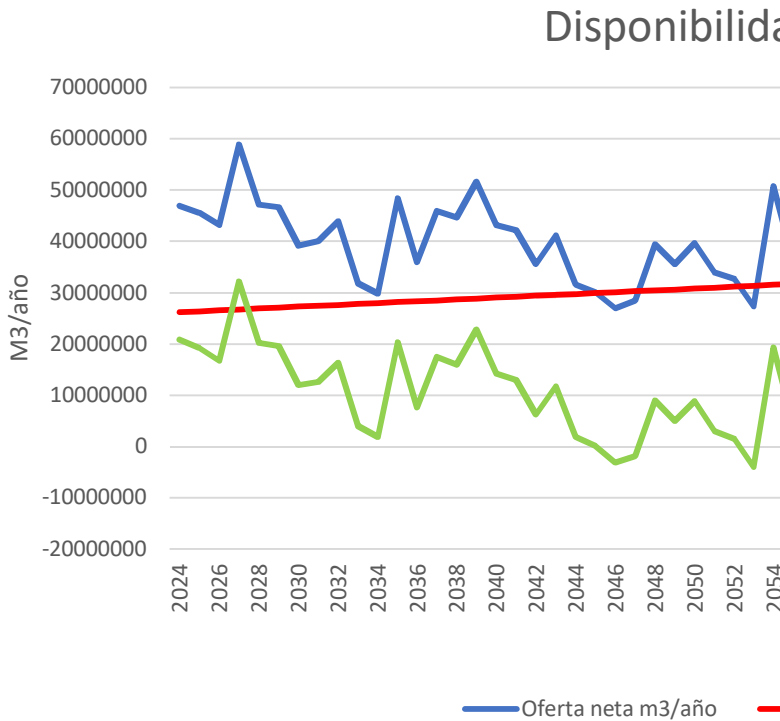
108741866.032	158676741.077	49934875	33988862
105028935.134	146996813.776	41967879	34166017
98314897.086	132149758.102	33834861	34343171
88353947.431	116193375.322	27839428	34520326
90003351.297	120615771.163	30612420	34697480
103588395.370	153591683.307	50003288	34874635
111946582.630	163589413.871	51642831	35051790
106385782.663	145229070.845	38843288	35228944
115120578.537	166156241.935	51035663	35406099
97610034.410	133079529.785	35469495	35583253
88845606.236	134758276.195	45912670	35760408
101084868.184	138024533.850	36939666	35937562
104559933.483	147779364.182	43219431	36114717
101209187.345	137957890.952	36748704	36291872
84753939.535	108940846.503	24186907	36469026
89891855.615	134104800.170	44212945	36646181
106621036.719	152700402.039	46079365	36823335
103968360.076	147010360.053	43042000	37000490
94704566.432	122174447.394	27469881	37177644
99436993.009	144114010.629	44677018	37354799
96147140.789	131663866.601	35516726	37531954
100599280.211	132600653.249	32001373	37709108
91834690.614	124169640.116	32334950	37886263
102484313.258	142216029.448	39731716	38063417
107936586.473	155889204.221	47952618	38240572
101945475.587	146991189.161	45045714	38417726
103064326.377	138656730.394	35592404	38594881
96299052.906	122987831.388	26688778	38772036
94107712.870	124750977.298	30643264	38949190
90065219.653	123481170.198	33415951	39126345
97117333.137	138612763.302	41495430	39303499
110269462.673	158591804.479	48322342	39480654
102242266.775	138844704.826	36602438	39657808

| Disponibilidad de agua |

-5184683
16680356
12341246
6158939
15229695
21326143
15140385
13547755
8943683
19106580
24555875
13703186
10625556
21666260
16968316
8194131
16495525
7650897
16706058
17062479
13045794
10194863
8193503
4972442
-5951059
1183738
17209595
17774791
17659722
4581493
8641732
16589386
-5735412
-10199402
15847003
17663389
4981397
-1536767
-2252053
32892978
10355997
1211584
5253267

15946013
7801862
-508310
-6680898
-4085060
15128653
16591042
3614344
15629565
-113758
10152262
1002103
7104714
456832
-12282119
7566764
9256030
6041510
-9707763
7322219
-2015228
-5707735
-5551313
1668299
9712046
6627987
-3002477
-12083257
-8305926
-5710394
2191931
8841688
-3055370

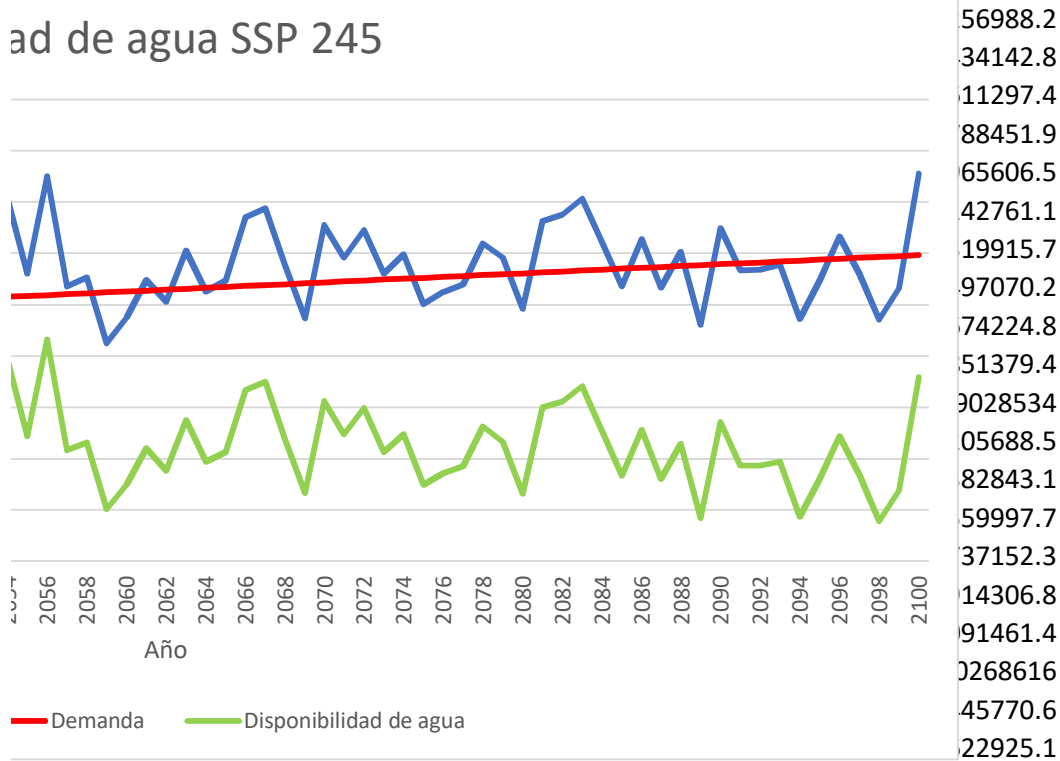
Año	Vp	Vt	IRH	Caudal_Ambiental m3/s	Oferta total m3/s
2024	375.4761	547.2962	0.686056	0.000965942	1.490065
2025	1358.904	1559.407	0.871424	2.825217946	4.268952
2026	1502.624	1701.164	0.883291	3.289871546	4.659336
2027	1668.466	1940.423	0.859847	3.439801015	5.308451
2028	1747.587	1980.452	0.882418	3.931127314	5.425105
2029	1637.774	1878.052	0.87206	3.65759525	5.137893
2030	1428.576				
2031	1299.516				
2032	1505.925				
2033	1379.578				
2034	1290.952				
2035	1654.938				
2036	1391.43				
2037	1292.273				
2038	1618.066				
2039	1760.375				
2040	1583.878				
2041	1462.472				
2042	1284.488				
2043	1364.16				
2044	1391.428				
2045	1283.962				
2046	1167.781				
2047	1140.963				
2048	1300.826				
2049	1282.716				
2050	1369.755	1571.249	0.871762	3.043028573	4.301301
2051	1381.699	1552.3	0.890098	3.17604027	4.250577
2052	1335.512	1512.35	0.883071	3.102414211	4.138001
2053	1244.896	1392.789	0.893815	2.946032592	3.812542
2054	1371.883	1581.359	0.867534	2.713053201	4.324348
2055	1373.908	1569.56	0.875346	3.156935854	4.299575
2056	1462.361	1685.117	0.867809	2.867386511	4.611739
2057	1355.106	1533.68	0.883565	3.130434097	4.19662
2058	1339.618	1527.313	0.877108	3.063107351	4.183108
2059	1124.776	1248.272	0.901066	2.706530969	3.418822
2060	1150.705	1290.282	0.891824	2.668800983	3.537149
2061	1321.948	1505.847	0.877877	3.02494087	4.127375
2062	1228.47	1385.252	0.886821	2.824236126	3.792521
2063	1305.811	1481.76	0.881256	2.770109549	4.057761
2064	1332.469	1505.077	0.885316	3.08587174	4.119908
2065	1259.955	1438.928	0.875621	2.83654212	3.937146
2066	1297.472	1502.121	0.86376	2.618242499	4.10835



2067	1671.267	1941.222	0.860936	3.767897206	5.315055
2068	1478.982	1671.71	0.884712	3.389307089	4.578877
2069	1222.988	1370.765	0.892193	2.883827498	3.751966
2070	1348.294	1533.024	0.879499	2.752696771	4.198155
2071	1376.151	1569.846	0.876615	3.051060462	4.294072
2072	1515.6	1744.704	0.868686	3.372631231	4.783695
2073	1293.047	1475.002	0.876641	2.891413621	4.03628
2074	1471.568	1668.584	0.881926	3.305588112	4.567219
2075	1310.644	1473.661	0.88938	3.078400636	4.033393
2076	1342.427	1511.547	0.888115	3.113158308	4.141614
2077	1265.155	1425.665	0.887414	2.823377726	3.901355
2078	1343.9	1548.278	0.867997	2.903071352	4.234358
2079	1308.783	1529.906	0.855467	2.943794555	4.185755
2080	1182.459	1342.644	0.880694	2.748248599	3.674834
2081	1408.259	1623.204	0.86758	2.973041632	4.440736
2082	1458.439	1714.637	0.850582	3.183379828	4.691831
2083	1619.138	1880.637	0.860952	3.553504717	5.161141
2084	1389.672	1624.199	0.855604	3.106354626	4.442322
2085	1352.774	1537.485	0.879862	3.14429047	4.20756
2086	1372.927	1571.897	0.87342	2.945641348	4.301425
2087	1321.063	1497.197	0.882358	3.039375338	4.097218
2088	1373.607	1561.393	0.879732	2.996699367	4.276281
2089	1256.597	1404.126	0.894932	3.017595108	3.844757
2090	1340.095	1541.563	0.869309	2.796127358	4.222047
2091	1366.882	1557.467	0.877631	3.101234803	4.263477
2092	1300.799	1488.43	0.87394	2.902281883	4.070391
2093	1415.543	1612.701	0.877746	3.213328108	4.412333
2094	1222.728	1371.078	0.891801	2.890669363	3.752903
2095	1231.208	1395.327	0.88238	2.719750343	3.821089
2096	1422.055	1632.257	0.87122	3.089049833	4.462033
2097	1413.649	1606.249	0.880093	3.249466506	4.391589
2098	1154.602	1299.317	0.888622	2.699000751	3.556329
2099	1278.117	1456.436	0.877565	2.937747391	3.98936
2100	1494.941	1741.019	0.858659	3.016426251	4.777432

Caudal_Ambiental m3/año	Oferta total m3/año	Oferta neta m3/año	Demanda
30462	46990689.84	46960228	26194060.8
89096073	134625670.3	45529597	26371215.3
103749389	146936820.1	43187431	26548369.9
108477565	167407310.7	58929746	26725524.5
123972031	171086111.3	47114080	26902679.1
115345924	162028593.6	46682670	27079833.6

ad de agua SSP 245



95964949	135645828.3	39680879	30800079.7
100159606	134046196.3	33886590	30977234.3
97837735	130495999.5	32658265	31154388.9
92906084	120232324.5	27326241	31331543.4
85558846	136372638.5	50813793	31508698
99557129	135591397.2	36034268	31685852.6
90425901	145435801.1	55009900	31863007.2
98721370	132344608.3	33623239	32040161.7
96598153	131918493.9	35320340	32217316.3
85353161	107815970.6	22462810	32394470.9
84163308	111547530.9	27384223	32571625.5
95394535	130160898	34766363	32748780
89065110	119600942.3	30535832	32925934.6
87358175	127965550.9	40607376	33103089.2
97316051	129925418.7	32609367	33280243.8
89453192	124161836.3	34708644	33457398.3
82568895	129560925.6	46992030	33634552.9

118824406	167615574.5	48791168	33811707.5
106885188	144399465.1	37514277	33988862.1
90944384	118321999.8	27377616	34166016.6
86809045	132393016.1	45583971	34343171.2
96218243	135417854.6	39199612	34520325.8
106359299	150858605.5	44499307	34697480.4
91183620	127288126.1	36104506	34874634.9
104245027	144031818.4	39786792	35051789.5
97080442	127197081.6	30116639	35228944.1
98176560	130609939.1	32433379	35406098.7
89038040	123033131.3	33995091	35583253.2
91551258	133534713.9	41983456	35760407.8
92835505	132001969.7	39166465	35937562.4
86668768	115889565	29220797	36114717
93757841	140043050.5	46285210	36291871.5
100391066	147961582.4	47570516	36469026.1
112063325	162761742.6	50698418	36646180.7
97961999	140093066.6	42131067	36823335.3
99158344	132689612.2	33531268	37000489.8
92893746	135649738.8	42755993	37177644.4
95849741	129209866.8	33360126	37354799
94503911	134856797.6	40352886	37531953.6
95162879	121248256.8	26085377	37709108.1
88178672	133146474.2	44967802	37886262.7
97800541	134453010.7	36652470	38063417.3
91526361	128363850.6	36837489	38240571.9
101335515	139147333.5	37811818	38417726.4
91160149	118351549	27191400	38594881
85770047	120501862.7	34731816	38772035.6
97416276	140714672.7	43298397	38949190.2
102475176	138493150.7	36017975	39126344.7
85115688	112152391.3	27036704	39303499.3
92644802	125808457	33163655	39480653.9
95126018	150661095.6	55535077	39657808.5

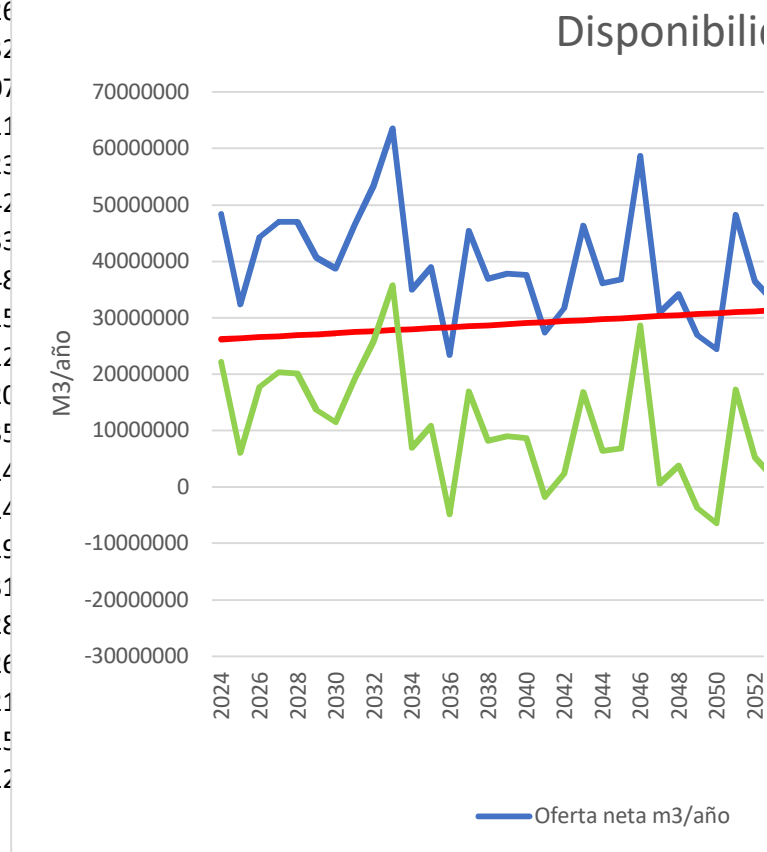
| Disponibilidad de agua |

20766167
19158382
16639061
32204221
20211401
19602836
11973500
12606992
16267267
3979987
1792193
20282322
7584196
17483404
15958481
22833845
14171250
13014453
6155596
11673100
1874120
122059
-3133396
-1878304
8934761
4949875
8880800
2909356
1503876
-4005303
19305095
4348416
23146893
1583077
3103024
-9931661
-5187402
2017583
-2390103
7504287
-670876
1251246
13357477

14979461
3525415
-6788401
11240800
4679286
9801827
1229871
4735002
-5112305
-2972720
-1588162
6223048
3228902
-6893920
9993338
11101490
14052237
5307732
-3469222
5578349
-3994673
2820933
-11623731
7081539
-1410947
-1403083
-605908
-11403481
-4040220
4349207
-3108370
-12266796
-6316999
15877269

Año	Vp	Vt	IRH	Caudal_Ambiental m3/s	Oferta total m3/s
2024	395.3045	562.7605	0.702438	4.13771E-05	1.533683691
2025	988.6947	1124.053	0.87958	2.04787577	3.075621773
2026	1391.06	1593.684	0.872858	2.958440859	4.361428733
2027	1479.302	1711.614	0.864273	3.193978875	4.685814531
2028	1572.594	1797.88	0.874693	3.427186794	4.917745294
2029	1501.921	1716.279	0.875103	3.40400961	4.694421401
2030	1424.247	1627.886	0.874906	3.227152928	4.455216314
2031	1440.228	1667.522	0.863694	3.086549498	4.563860472
2032	1575.888	1829.7	0.861282	3.311347634	5.004721858
2033	1613.011	1883.898	0.85621	3.136260379	5.150701548
2034	1548.219	1727.599	0.896168	3.621310669	4.729997709
2035	1419.123	1624.8	0.873414	3.21446739	4.448647773
2036	1177.36	1306.454	0.901188	2.834076238	3.577748837
2037	1387.073	1579.637	0.878096	2.882664715	4.322967094
2038	1322.319	1503.025	0.879772	2.944759063	4.11360092
2039	1425.95	1611.763	0.884715	3.219945724	4.419298348
2040	1396.412	1599.291	0.873144	3.189136256	4.382461559
2041	1233.269	1374.426	0.897297	2.895902208	3.764861765
2042	1177.562	1327.155	0.887283	2.628978127	3.633344007
2043	1401.144	1610.882	0.8698	2.941604342	4.411264482
2044	1441.454	1638.324	0.879835	3.33860758	4.483908675
2045	1306.47	1502.821	0.869345	2.944678661	4.111219501
2046	1468.172	1720.317	0.853431	2.841038511	4.701834755
2047	1383.917	1544.316	0.896135	3.251446791	4.22987964
2048	1384.105	1548.327	0.893935	3.155343535	4.240890846
2049	1214.183	1363.59	0.890431	2.880752888	3.735034877
2050	1104.372	1228.393	0.899038	2.588343864	3.362508729
2051	1315.778	1512.768	0.869782	2.60911669	4.13757376
2052	1323.451	1507.372	0.877986	2.974448	4.12853076
2053	1294.453	1469.834	0.88068	2.974713446	4.020239777
2054	1380.561	1583.045	0.872092	3.209813788	4.336617353
2055	1205.509	1375.898	0.876161	2.782238893	3.766791645
2056	1271.711	1448.122	0.878179	2.771130979	3.963125036
2057	1417.302	1642.48	0.862904	3.068397792	4.495533138
2058	1333.25	1502.386	0.887422	3.118678616	4.112620855
2059	1311.394	1505.468	0.871087	2.978759782	4.119582332
2060	1081.016	1206.035	0.896339	2.50702948	3.298959264
2061	1312.268	1489.918	0.880765	2.778798021	4.074899867
2062	1653.835	1906.546	0.867451	3.674510595	5.224312071
2063	1316.113	1511.589	0.870682	2.815441534	4.13630996
2064	1145.065	1258.14	0.910125	2.744984263	3.444902629
2065	1186.659	1349.922	0.879057	2.568655581	3.694701971
2066	1241.39	1410.676	0.879997	2.849049741	3.861427789

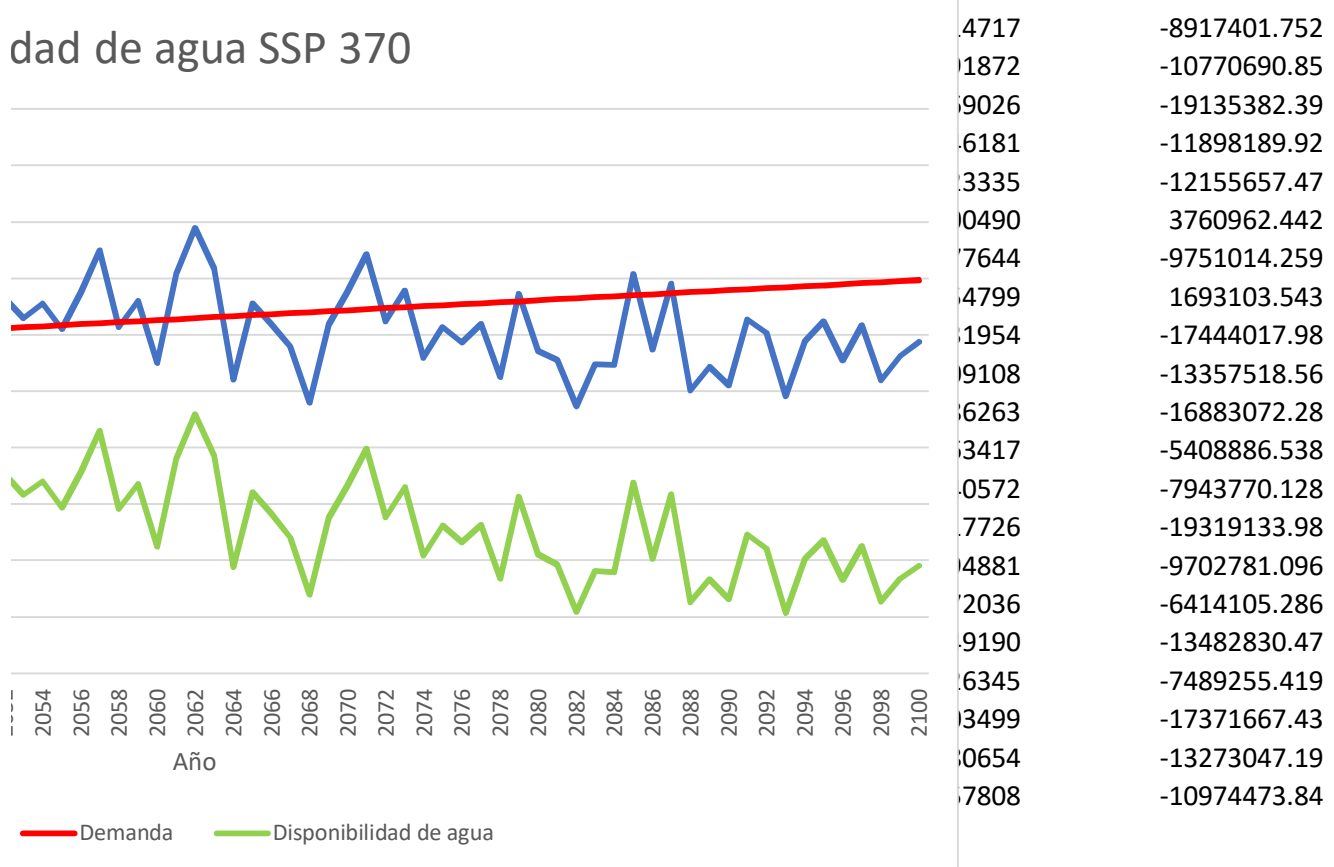
2067	1239.842	1393.407	0.889792	2.92994241	3.81359803
2068	1031.752	1135.01	0.909024	2.539879929	3.109139744
2069	1065.376	1194.4	0.891976	2.262575346	3.269071525
2070	1174.046	1342.778	0.874341	2.48245885	3.674113551
2071	1465.912	1690.133	0.867335	3.218302764	4.623521436
2072	1198.032	1357.885	0.882278	2.688935327	3.714549742
2073	1399.615	1588.487	0.881099	3.150116142	4.349886193
2074	1189.861	1329.709	0.894828	2.818150768	3.640792425
2075	1104.973	1244.751	0.887706	2.413608066	3.407565114
2076	1138.044	1276.753	0.891357	2.586282846	3.494590064
2077	1222.697	1391.262	0.87884	2.796381717	3.808546381
2078	1110.253	1235.811	0.8984	2.671129839	3.383463998
2079	1085.847	1250.75	0.868157	2.24137978	3.423081882
2080	1140.256	126			
2081	1188.777	132			
2082	978.6102	107			
2083	990.4097	111			
2084	1104.183	123			
2085	1249.495	142			
2086	1179.158	133			
2087	1275.491	148			
2088	1043.285	115			
2089	999.9687	112			
2090	1085.254	120			
2091	1210.007	135			
2092	1279.102	14			
2093	1031.936	114			
2094	1058.898	119			
2095	1153.907	131			
2096	1138.879	128			
2097	1123.382	126			
2098	1086.123	121			
2099	1017.192	115			
2100	989.4305	112			



Caudal_Ambiental m3/año	Oferta total m3/año	Oferta neta m3/año	Demanda	Disponibilidad de agua
1304.866862	48366248.89	48364944.02	26194061	22170883.27
64581810.3	96992808.24	32410997.95	26371215	6039782.621
93297390.94	137542016.5	44244625.6	26548370	17696255.7
100725317.8	147771847.1	47046529.26	26725524	20321004.78
108079762.7	155086015.6	47006252.86	26902679	20103573.81
107348847.1	148043273.3	40694426.24	27079834	13614592.62
101771494.7	140499701.7	38728206.94	27256988	11471218.74
97337424.97	143925903.8	46588478.87	27434143	19154336.1
104426659	157828908.5	53402249.53	27611297	25790952.18
98905107.31	162432524	63527416.71	27788452	35738964.78
114201653.3	149165207.7	34963554.48	27965607	6997947.98
101371443.6	140292556.2	38921112.58	28142761	10778351.51
89375428.23	112827887.3	23452459.09	28319916	-4867456.559
90907714.44	136329090.3	45421375.84	28497070	16924305.62
92865921.82	129726518.6	36860596.79	28674225	8186371.989
101544208.4	139366992.7	37822784.35	28851379	8971404.974
100572601	138205307.7	37632706.75	29028534	8604172.795
91325172.04	118728680.6	27403508.58	29205689	-1802179.941
82907454.21	114581136.6	31673682.4	29382843	2290839.297
92766434.51	139113636.7	46347202.18	29559998	16787204.5
105286328.7	141404544	36118215.31	29737152	6381063.059
92863386.26	129651418.2	36788031.93	29914307	6873725.105
89594990.48	148277060.8	58682070.36	30091461	28590608.96
102537626	133393484.3	30855858.32	30268616	587242.3448
99506913.71	133740733.7	34233820	30445771	3788049.452
90847423.07	117788059.9	26940636.81	30622925	-3682288.318
81626012.08	106040075.3	24414063.2	30800080	-6386016.495
82281103.92	130482526.1	48201422.19	30977234	17224187.91
93802192.12	130197346	36395153.91	31154389	5240765.064
93810563.25	126782281.6	32971718.36	31331543	1640174.936
101224687.6	136759564.8	35534877.22	31508698	4026179.223
87740685.72	118789541.3	31048855.59	31685853	-636996.9854
87390386.54	124981111.1	37590724.58	31863007	5727717.428
96764992.77	141771133	45006140.26	32040162	12965978.54
98350648.84	129695611.3	31344962.43	32217316	-872353.868
93938168.49	129915148.4	35976979.93	32394471	3582509.057
79061681.69	104035979.3	24974297.65	32571625	-7597327.802
87632174.38	128506042.2	40873867.83	32748780	8125087.808
115879366.1	164753905.5	48874539.33	32925935	15948604.73
88787764.23	130442670.9	41654906.66	33103089	8551817.481
86565823.72	108638449.3	22072625.6	33280244	-11207618.15
81005122.4	116516121.4	35510998.97	33457398	2053600.641
89847632.63	121773986.8	31926354.13	33634553	-1708198.772

92398663.85	120265627.5	27866963.62	33811707	-5944743.852
80097653.45	98049830.95	17952177.5	33988862	-16036684.55
71352576.12	103093439.6	31740863.51	34166017	-2425153.12
78286822.29	115866844.9	37580022.65	34343171	3236851.453
101492396	145807372	44314976.05	34520326	9794650.273
84798264.46	117142040.7	32343776.2	34697480	-2353704.149
99342062.65	137178011	37835948.35	34874635	2961313.421
88873202.62	114816029.9	25942827.31	35051790	-9108962.192
76115543.96	107460973.4	31345429.48	35228944	-3883514.596
81561015.82	110205392.3	28644376.45	35406099	-6761722.204
88186693.82	120106318.7	31919624.84	35583253	-3663628.381
84236750.6	106700920.6	22464170.03	35760408	-13296237.77
70684152.75	107950310.2	37266157.46	35937562	1328595.087

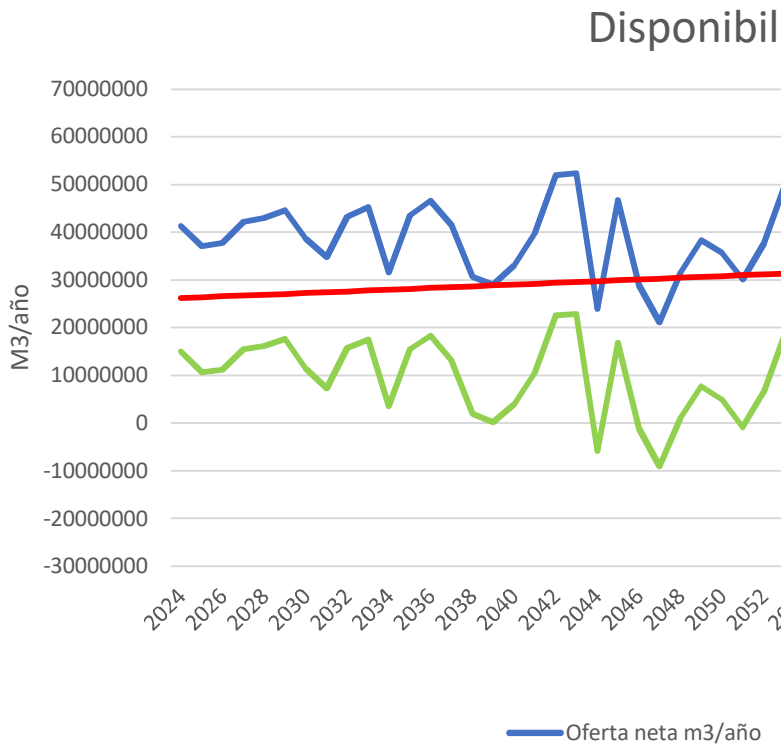
dad de agua SSP 370



Año	Vp	Vt	IRH	Caudal_Ambiental m3/s	Oferta total m3/s
2024	304.3642	479.5325	0.63471	1.69092E-05	1.30617051
2025	1035.389	1191.374	0.869071	2.083188889	3.258586554
2026	1285.631	1470.321	0.874388	2.828059035	4.023935583
2027	1468.5	1653.857	0.887924	3.189266693	4.526553469
2028	1548.348	1764.995	0.877254	3.46623632	4.830182513
2029	1523.63	1734.988	0.878179	3.32871414	4.744302988
2030	1528.916	1727.411	0.885091	3.504344413	4.730645283
2031	1366.757	1539.347	0.887881	3.111433682	4.213877518
2032	1574.569	1791.408	0.878956	3.532718572	4.905751744
2033	1634.143	1871.15	0.873336	3.684795053	5.121842029
2034	1393.239	1565.082	0.890202	3.281402823	4.282129549
2035	1438.894	1645.368	0.874512	3.120644125	4.501965802
2036	1693.122	1924.669	0.879695	3.798146089	5.277109292
2037	1628.879	1842.287	0.884162	3.730210347	5.047843952
2038	1316.744	1485.66	0.886302	3.094559173	4.065936236
2039	1242.353	1395.859	0.890027	2.901821264	3.821583251
2040	1224.703	1382.845	0.88564	2.736485314	3.782956633
2041	1358.68	1530.911	0.887497	2.929866346	4.191209246
2042	1621.96	1850.654	0.876425	3.421423311	5.071378797
2043	1709.35	1976.469	0.864851	3.751937302	5.414572857
2044	1191.794	1317.572	0.904538	2.849237419	3.608447267
2045	1283.295	1490.991	0.8607	2.598928329	4.082332911
2046	1277.577	1431.3	0.892599	3.00373766	3.920474811
2047	1148.603	1260.625	0.911138	2.780392232	3.451228981
2048	1181.219	1345.383	0.87798	2.683833539	3.683512636
2049	1226.003	1389.031	0.882632	2.584692215	3.800217696
2050	1336.911	1524.742	0.876811	3.046954231	4.177665392
2051	1196.955	1349.603	0.886894	2.739055206	3.694198628
2052	1360.873	1543.425	0.881723	3.036711832	4.231101581
2053	1420.104	1645.492	0.863027	2.929854693	4.50292846
2054	1415.462	1615.583	0.876131	3.110049187	4.422351022
2055	1718.891	1969.521	0.872746	3.576230662	5.390855165
2056	1586.49	1825.877	0.868892	3.670907813	4.998771359
2057	1156.317	1301.079	0.888737	2.737744057	3.558640406
2058	1300.705	1490.527	0.872648	2.773475294	4.082444026
2059	1218.959	1368.463	0.890751	2.837149677	3.745795668
2060	1521.222	1749.448	0.869544	3.234680196	4.793296654
2061	1236.81	1370.293	0.902588	2.93226536	3.75506935
2062	1097.687	1251.994	0.876751	2.566749669	3.428364909
2063	1212.569	1379.129	0.879228	2.522537768	3.775566451
2064	1302.336	1492.845	0.872385	2.758420551	4.085108222
2065	1277.788	1441.402	0.88649	3.000011751	3.950306558
2066	1046.022	1162.872	0.899516	2.526153211	3.184907459

2067	1068.433	1197.327	0.892348	2.342179915	3.277082249
2068	1187.536	1357.873	0.874556	2.582022557	3.716247122
2069	1192.47	1338.233	0.891078	2.795986012	3.670780216
2070	1029.092	1170.577	0.879132	2.44610549	3.207011835
2071	1007.983	1136.313	0.887064	2.3538792	3.111740468
2072	1041.833	1169.466	0.890863	2.256911237	3.201266092
2073	1209.501	1367.94	0.884177	2.76556031	3.747227462
2074	1151.236	1312.36	0.877225	2.585538702	3.591587789
2075	1133.318	1282.91	0.883396	2.648056331	3.511530291

2076	1021.30
2077	1165.24
2078	1003.96
2079	1072.81
2080	1023.17
2081	938.901
2082	918.326
2083	975.655
2084	1137.83
2085	968.417
2086	947.656
2087	953.24
2088	944.782
2089	912.397
2090	1062.71
2091	1140.02
2092	1170.63
2093	1072.97
2094	1024.24
2095	957.221

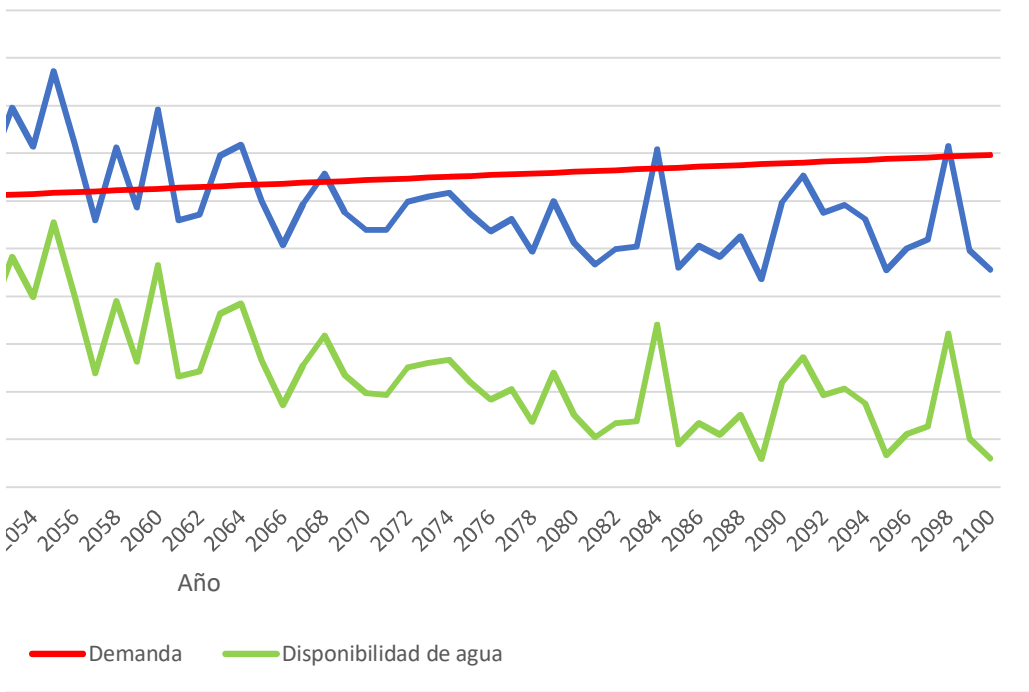


2096	962.5584	1076.94	0.89379	2.313872753	2.949016762
2097	936.7592	1050.541	0.891692	2.180904732	2.875811983
2098	1115.039	1308.219	0.852334	2.264790377	3.580586503
2099	949.3843	1060.947	0.894846	2.282644982	2.906522579
2100	873.6688	960.9654	0.909157	2.14077594	2.636914439

Caudal_Ambiental m3/año	Oferta total m3/año	Oferta neta m3/año	Demanda	Disponibilidad de agua
533.2493502	41191393.2	41190859.96	26194061	14996799.21
65695444.8	102762785.6	37067340.78	26371215	10696125.46
89185669.74	126898832.6	37713162.82	26548370	11164792.92
100576714.4	142749390.2	42172675.76	26725524	15447151.28
109311228.6	152324635.7	43013407.14	26902679	16110728.09
104974329.1	149616339	44642009.89	27079834	17562176.27
110513005.4	149185629.6	38672624.22	27256988	11415636.02
98122172.59	132888841.4	34766668.8	27434143	7332526.029
111407812.9	154707787	43299974.1	27611297	15688676.75
116203696.8	161522410.2	45318713.46	27788452	17530261.54
103482319.4	135041237.5	31558918.03	27965607	3593311.527
98412633.12	141973993.5	43561360.42	28142761	15418599.34
119778335.1	166418918.6	46640583.59	28319916	18320667.94
117635913.5	159188806.9	41552893.39	28497070	13055823.17
97590018.08	128223365.1	30633347.06	28674225	1959122.263
91511835.38	120517449.4	29005614.04	28851379	154234.6615
86297800.86	119299320.4	33001519.54	29028534	3972985.585
92396265.1	132173974.8	39777709.68	29205689	10572021.15
107898005.6	159931001.7	52032996.19	29382843	22650153.09
118321094.8	170753969.6	52432874.85	29559998	22872877.18
89853551.26	113795993	23942441.74	29737152	-5794710.509
81959803.79	128740450.7	46780646.91	29914307	16866340.08
94725870.83	123636093.6	28910222.8	30091461	-1181238.6
87682449.44	108837957.2	21155507.72	30268616	-9113108.255
84637374.47	116163254.5	31525880.03	30445771	1080109.481
81510853.69	119843665.3	38332811.56	30622925	7709886.438
96088748.62	131746855.8	35658107.18	30800080	4858027.477
86378844.99	116500247.9	30121402.95	30977234	-855831.33
95765744.32	133432019.5	37666275.14	31154389	6511886.293
92395897.61	142004351.9	49608454.32	31331543	18276910.89
98078511.16	139463261.8	41384750.67	31508698	9876052.668
112780010.2	170006008.5	57225998.31	31685853	25540145.73
115765748.8	157641253.6	41875504.77	31863007	10012497.62
86337496.58	112225283.8	25887787.26	32040162	-6152374.463
87464316.88	128743954.8	41279637.93	32217316	9062321.627
89472352.22	118127412.2	28655059.96	32394471	-3739410.918
102008874.7	151161403.3	49152528.61	32571625	16580903.16
92471920.38	118419867	25947946.64	32748780	-6800833.383
80945017.57	108116915.8	27171898.2	32925935	-5754036.395
79550751.06	119066263.6	39515512.53	33103089	6412423.358
86989550.49	128827972.9	41838422.4	33280244	8558178.649
94608370.57	124576867.6	29968497.04	33457398	-3488901.289
79664767.65	100439241.6	20774473.97	33634553	-12860078.93

73862985.79	103346065.8	29483080.01	33811707	-4328627.467
81426663.36	117195569.2	35768905.89	33988862	1780043.835
88174214.87	115761724.9	27587510.03	34166017	-6578506.592
77140382.72	101136325.2	23995942.51	34343171	-10347228.69
74231934.45	98131847.41	23899912.96	34520326	-10620412.81
71173952.78	100955127.5	29781174.71	34697480	-4916305.644
87214709.94	118172565.3	30957855.31	34874635	-3916779.614
81537548.49	113264312.5	31726764.02	35051790	-3325025.481
83509104.45	110739619.3	27230514.81	35228944	-7998429.262

idad de agua SSP 585



-11688894.7
-9426950.403
-16355700.03
-5962790.628
-14889977.34
-19582601.18
-16624513.61
-16215690.08
4035685.451
-21001701.3
-16548974.84
-19007619.26
-14905440.99
-24119462.42
-8162351.017
-2774580.852
-10704176.85
-9298347.142
-12370004.96
-23300278.32
-18919288.71
-17211749.63
2191447.336
-19806049.96
-24011584.75

72970291.15	93000192.59	20029901.44	38949190
68777011.62	90691606.71	21914595.09	39126345
71422429.33	112917376	41494946.64	39303499
71985492.14	91660096.06	19674603.92	39480654
67511510.05	83157733.75	15646223.7	39657808