

**EVALUACIÓN DE LA ESTRUCTURA EXISTENTE**

Estado Actual - NSR-98

**Evaluacion de Cargas**

Cargas

Muerta : 0.6 kN/m<sup>2</sup>

Viva : 1.8 kN/m<sup>2</sup>

**Analisis Modal**

1D + 0.25 L

Peso total Modelado : 7171.2 kN

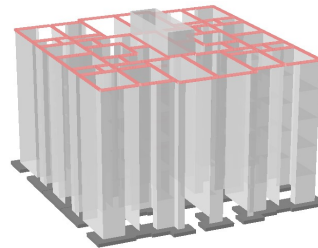
Modo	t (s)
1	0.463
2	0.207
3	0.1

**Viento**

1D + 0.25 L

**Parametros Sismicos**

R:	3.5	I:	1
Aa:	0.2	S:	1.2
φp. Φa :	0.9	φr :	1



**EVALUACIÓN DE LA ESTRUCTURA EXISTENTE - .**

Reforzamiento - NSR-10

Cargas

Muerta : 0.6 kN/m<sup>2</sup>

Viva : 1.8 kN/m<sup>2</sup>

**Analisis Modal**

1D + 0 L

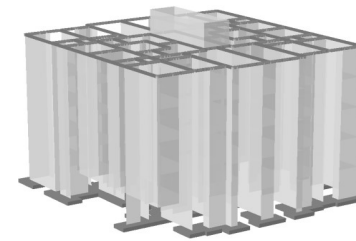
Peso total Modelado : 6705 kN

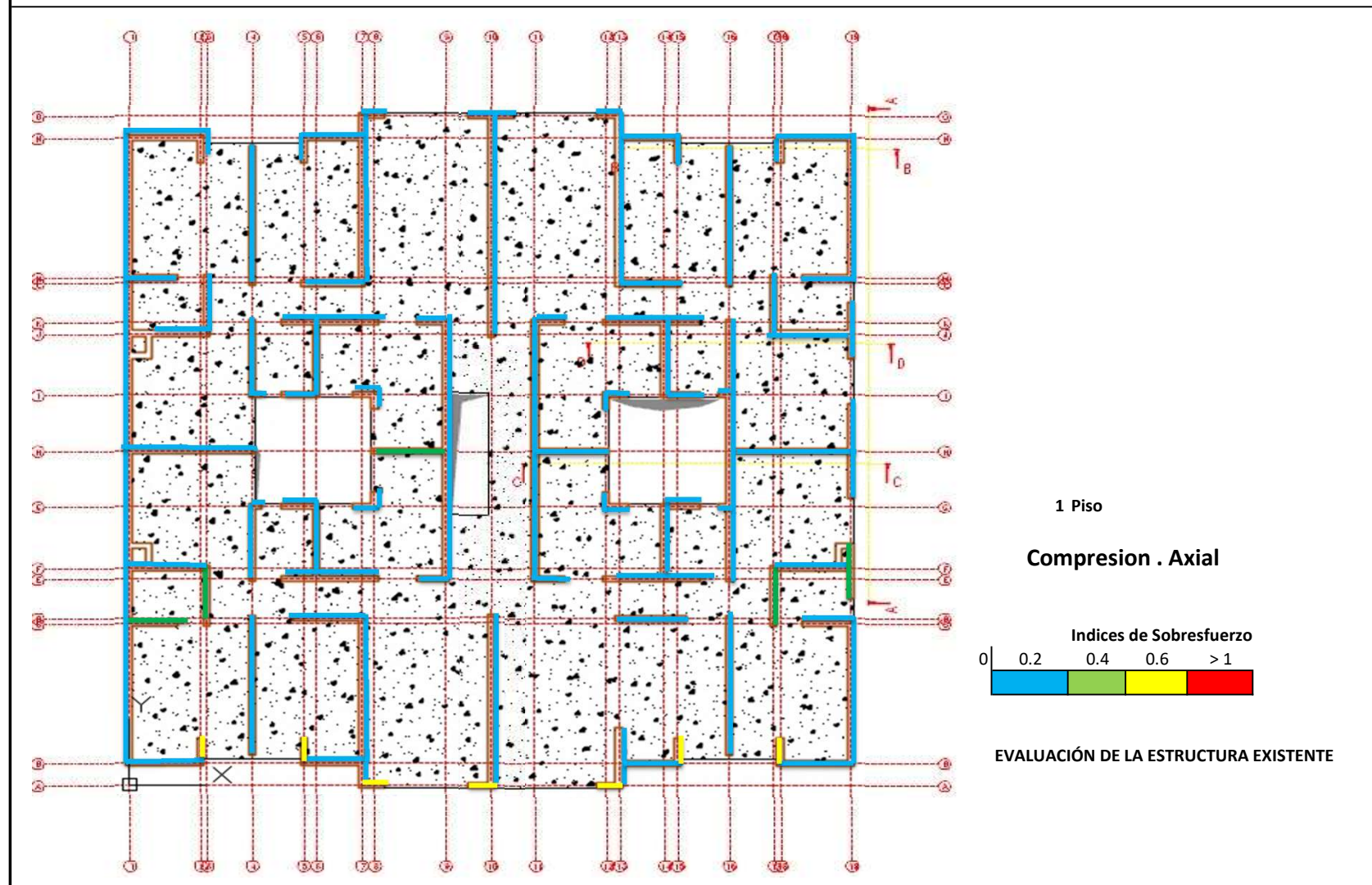
Modo	t (s)
1	0.398
2	0.18
3	0.095

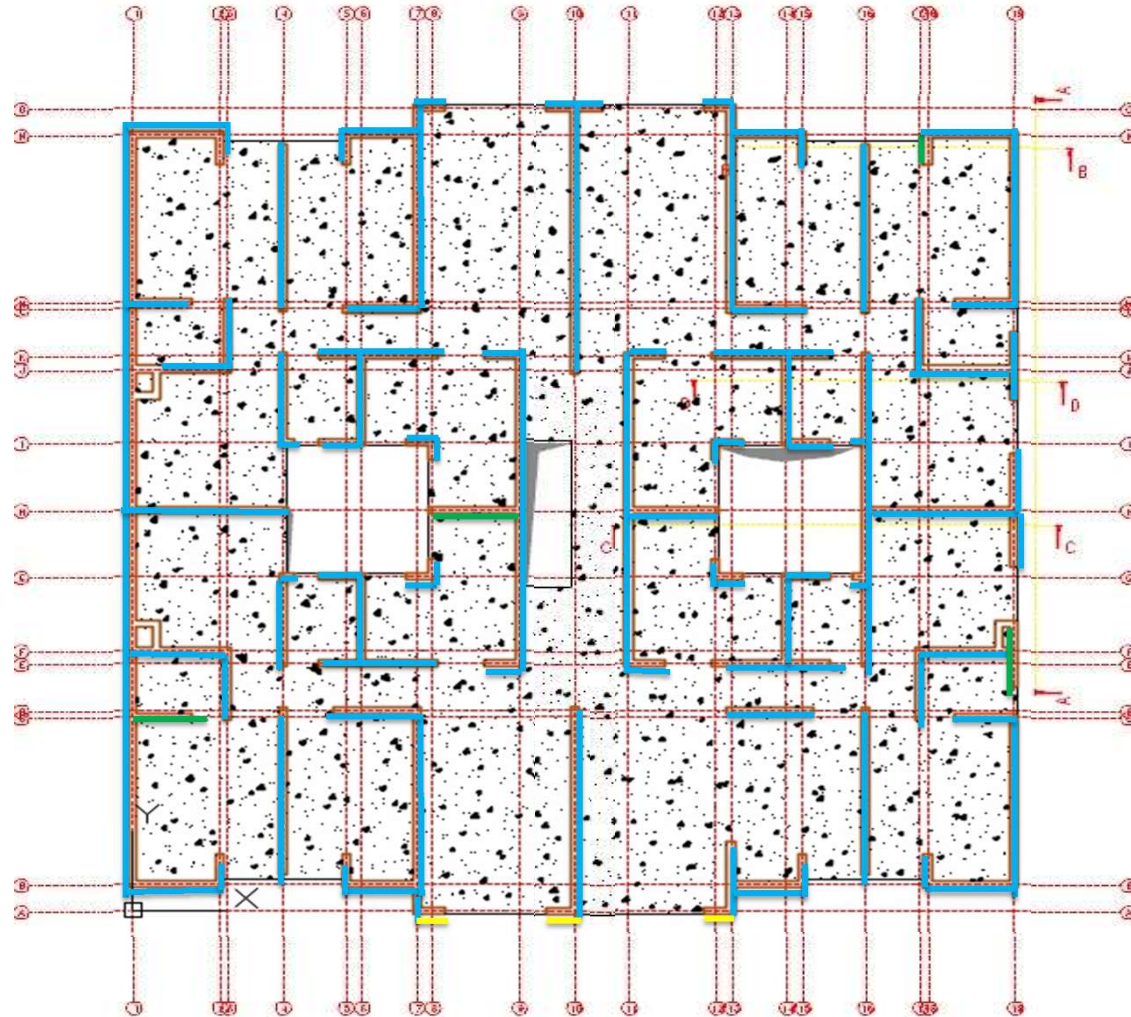
**Viento**

1D + 0 L

S:	D	I:	1
R:	2.5	Av:	0.2
Aa:	0.2	φr :	1
φp. Φa :	0.9		

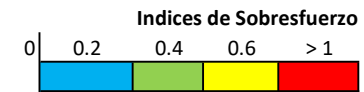




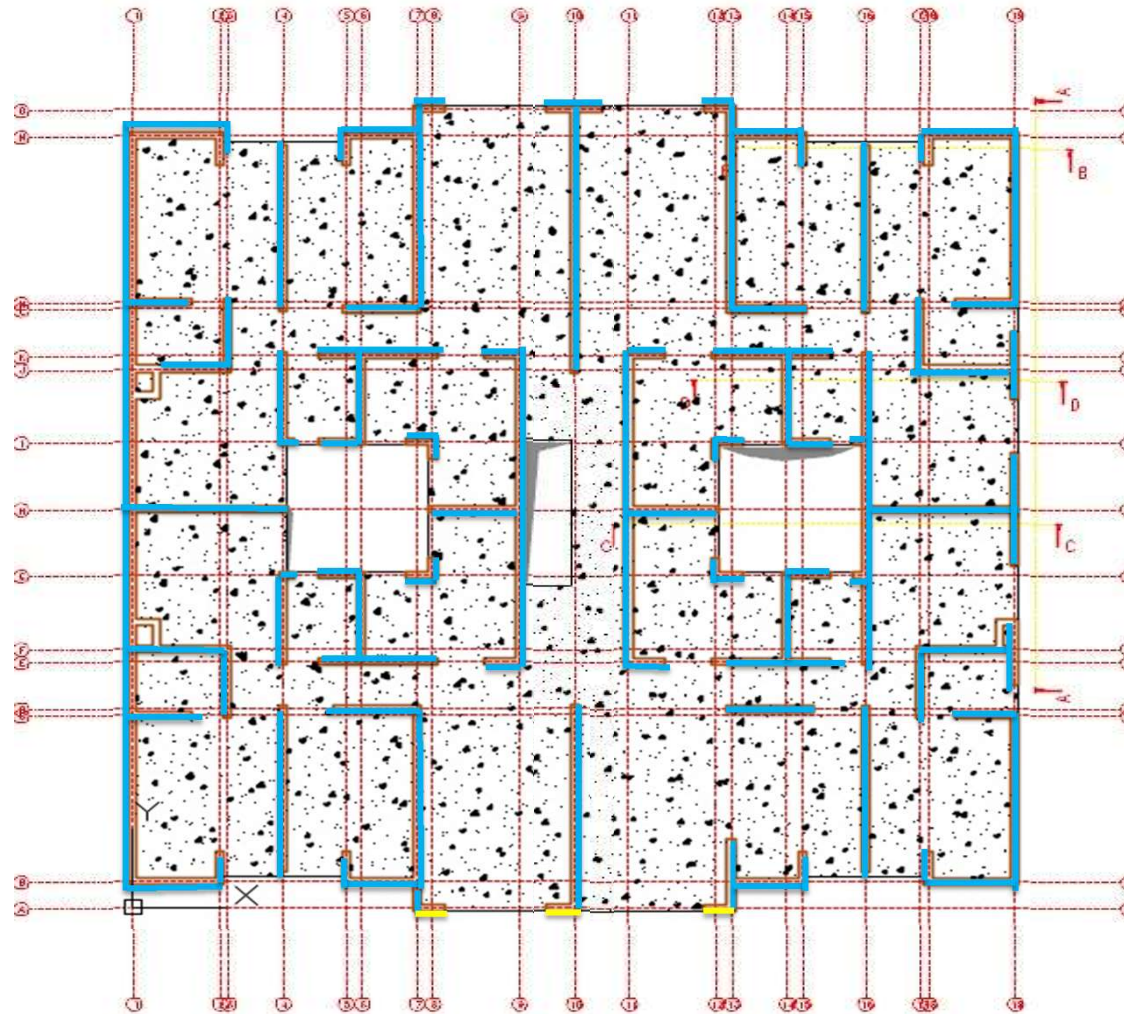


2 Piso

Compresion . Axial

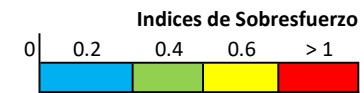


EVALUACIÓN DE LA ESTRUCTURA EXISTENTE

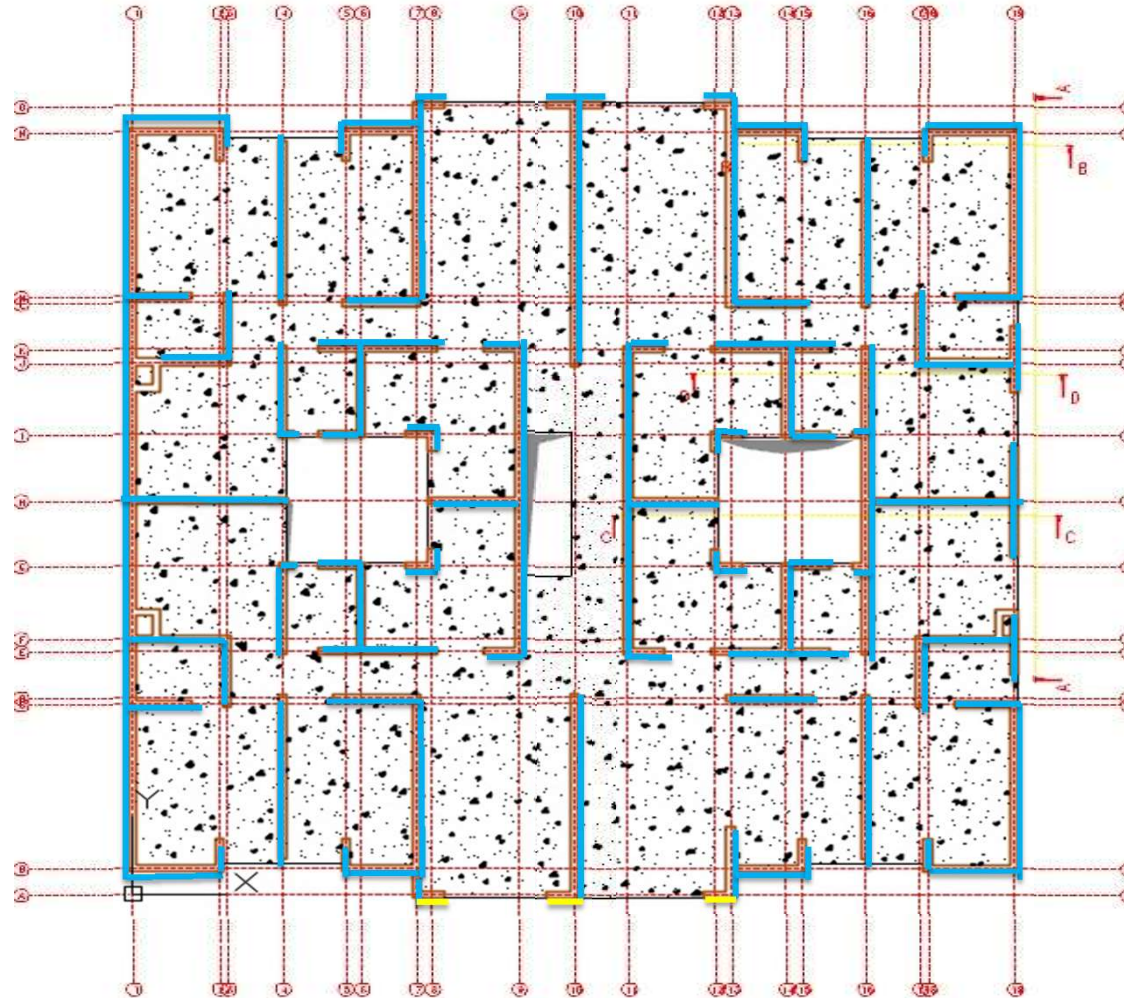


3 Piso

Compresion . Axial

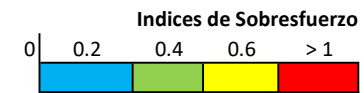


EVALUACIÓN DE LA ESTRUCTURA EXISTENTE

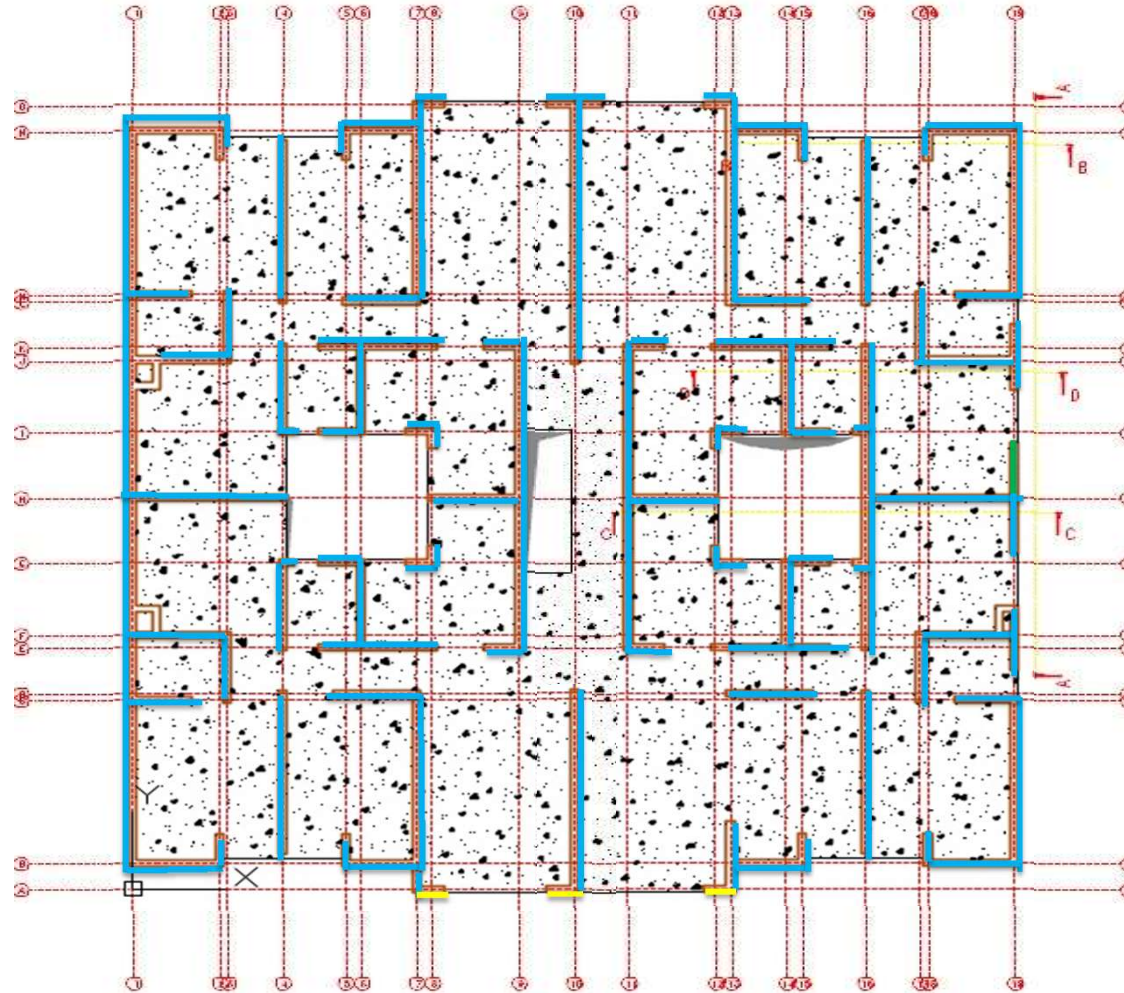


4 Piso

Compresion . Axial

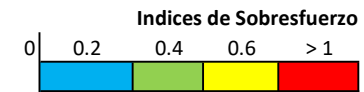


EVALUACIÓN DE LA ESTRUCTURA EXISTENTE

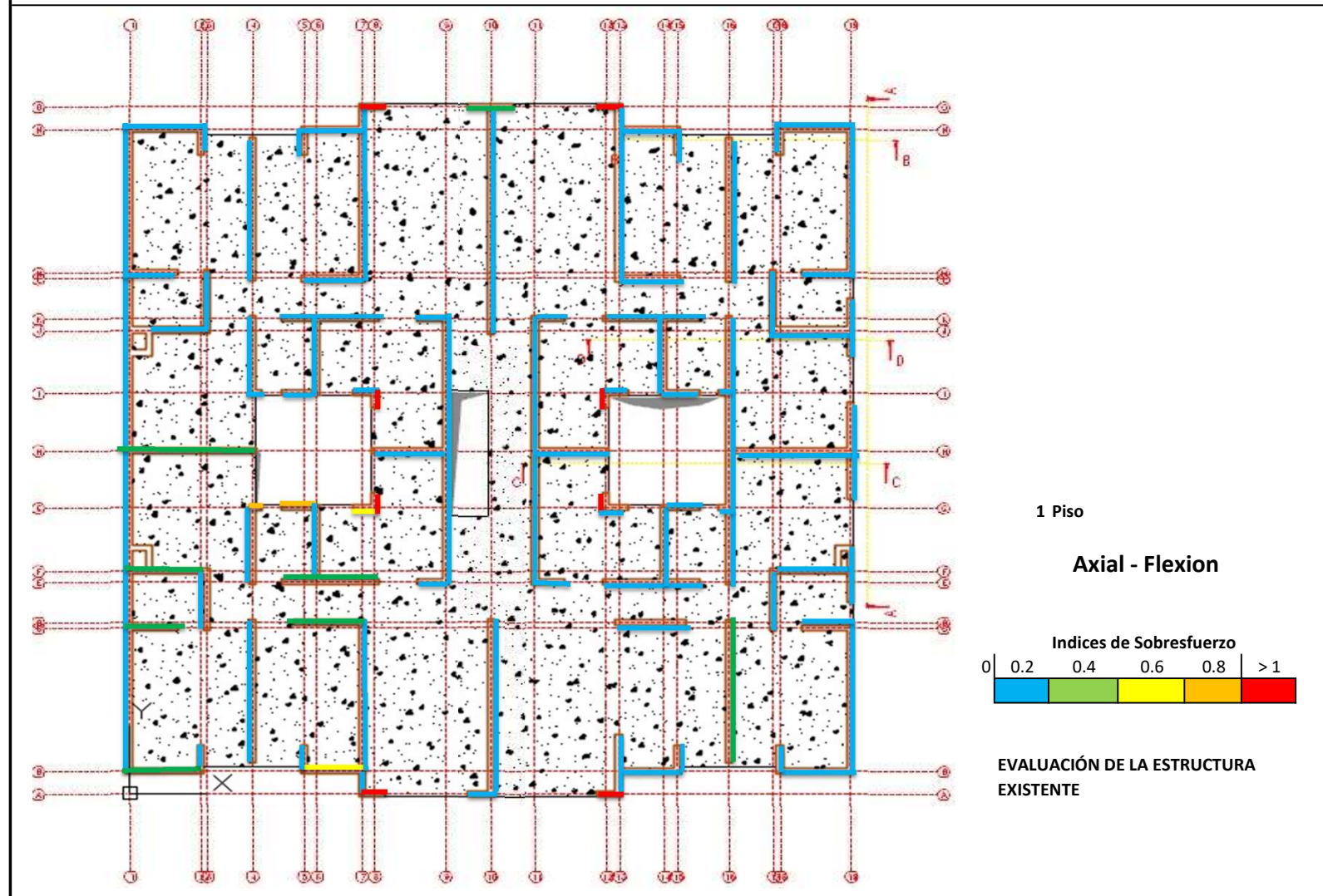


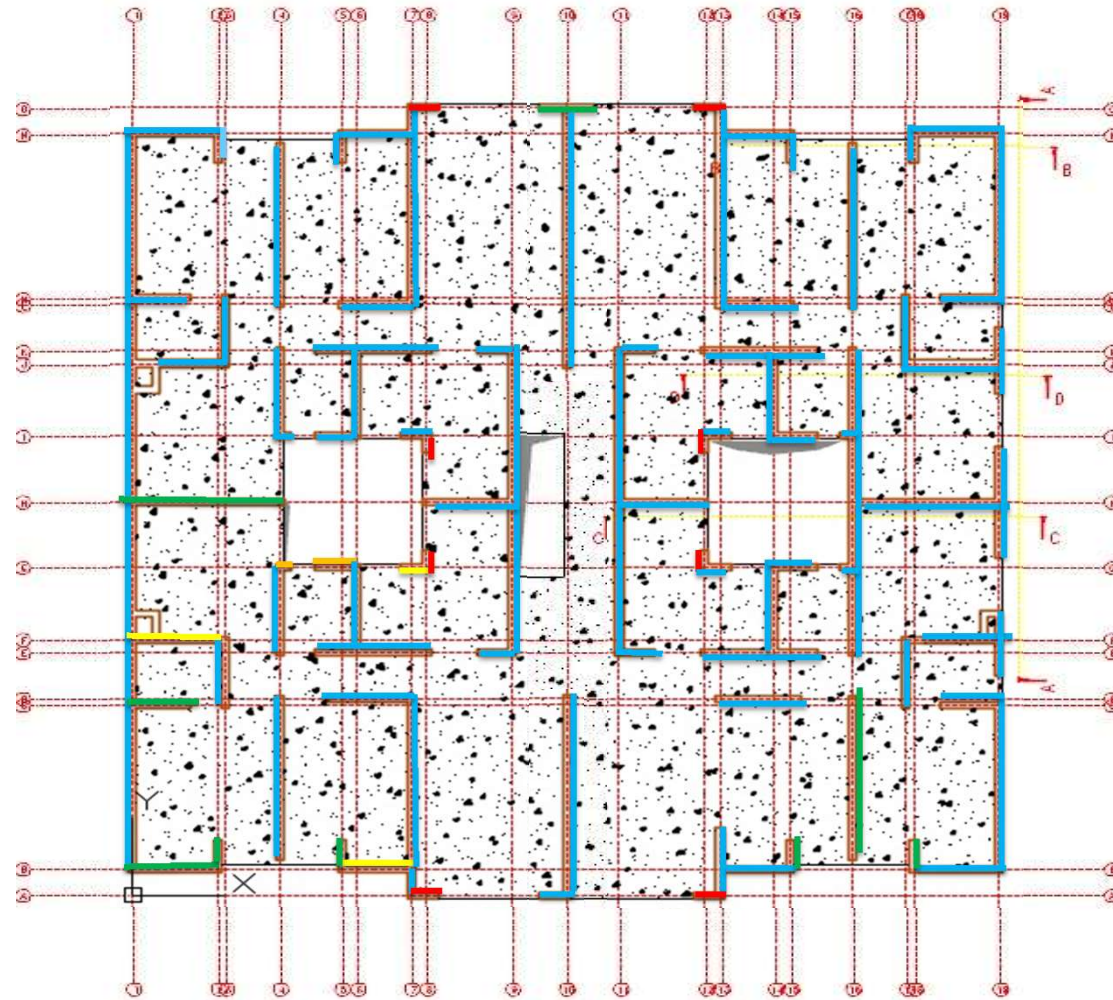
5 Piso

Compresion . Axial



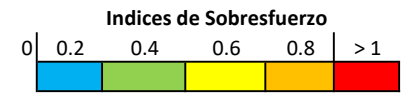
EVALUACIÓN DE LA ESTRUCTURA EXISTENTE



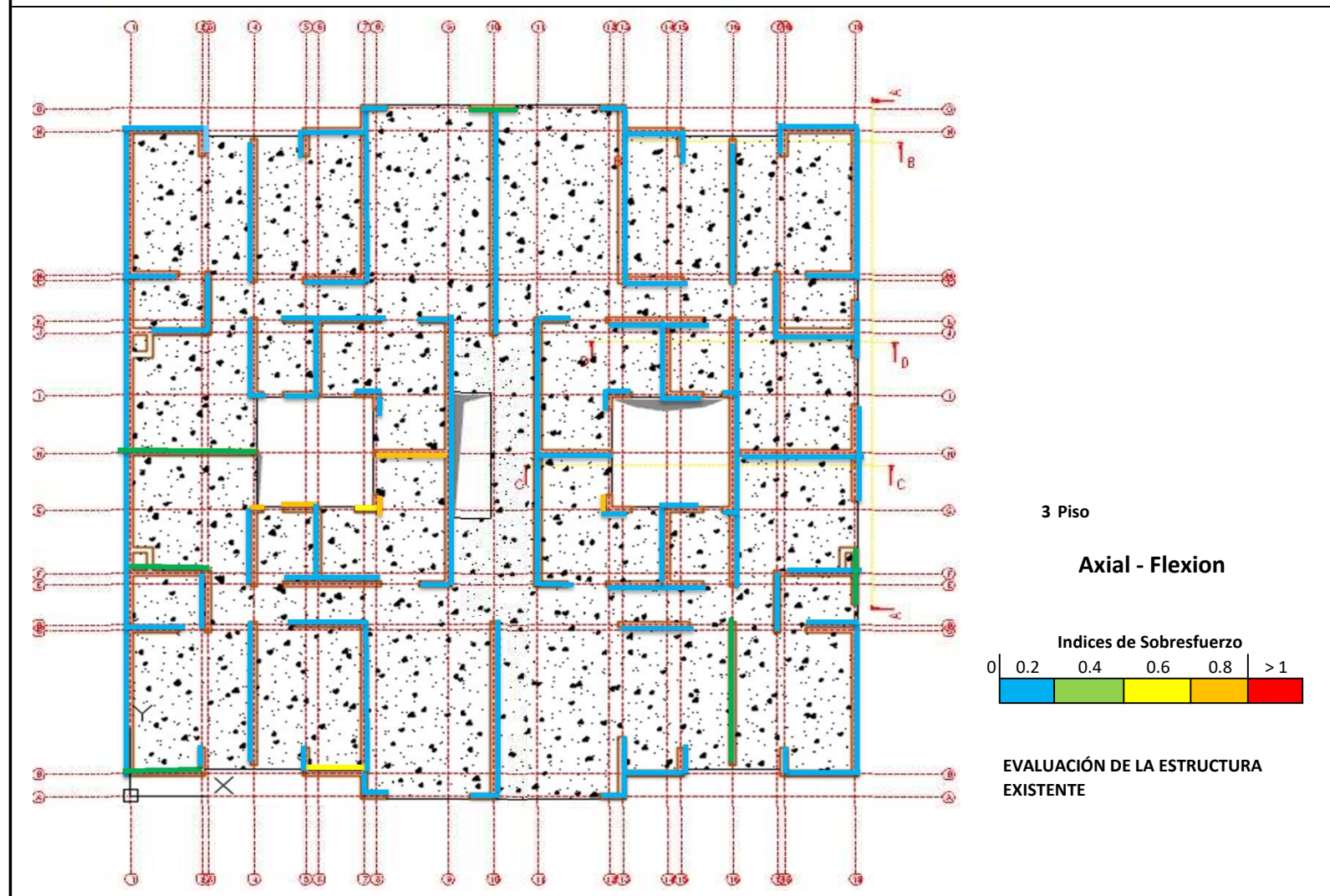


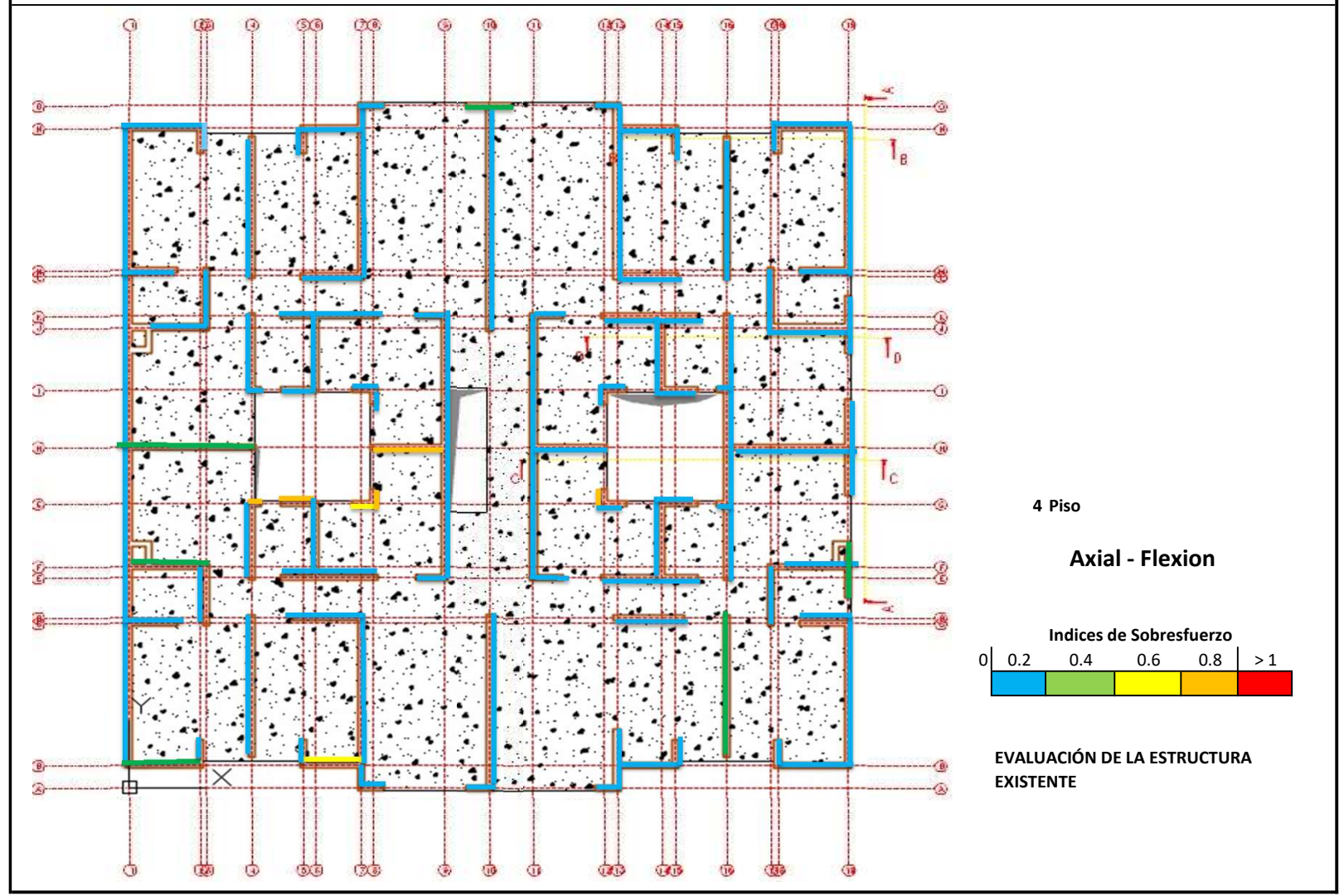
2 Piso

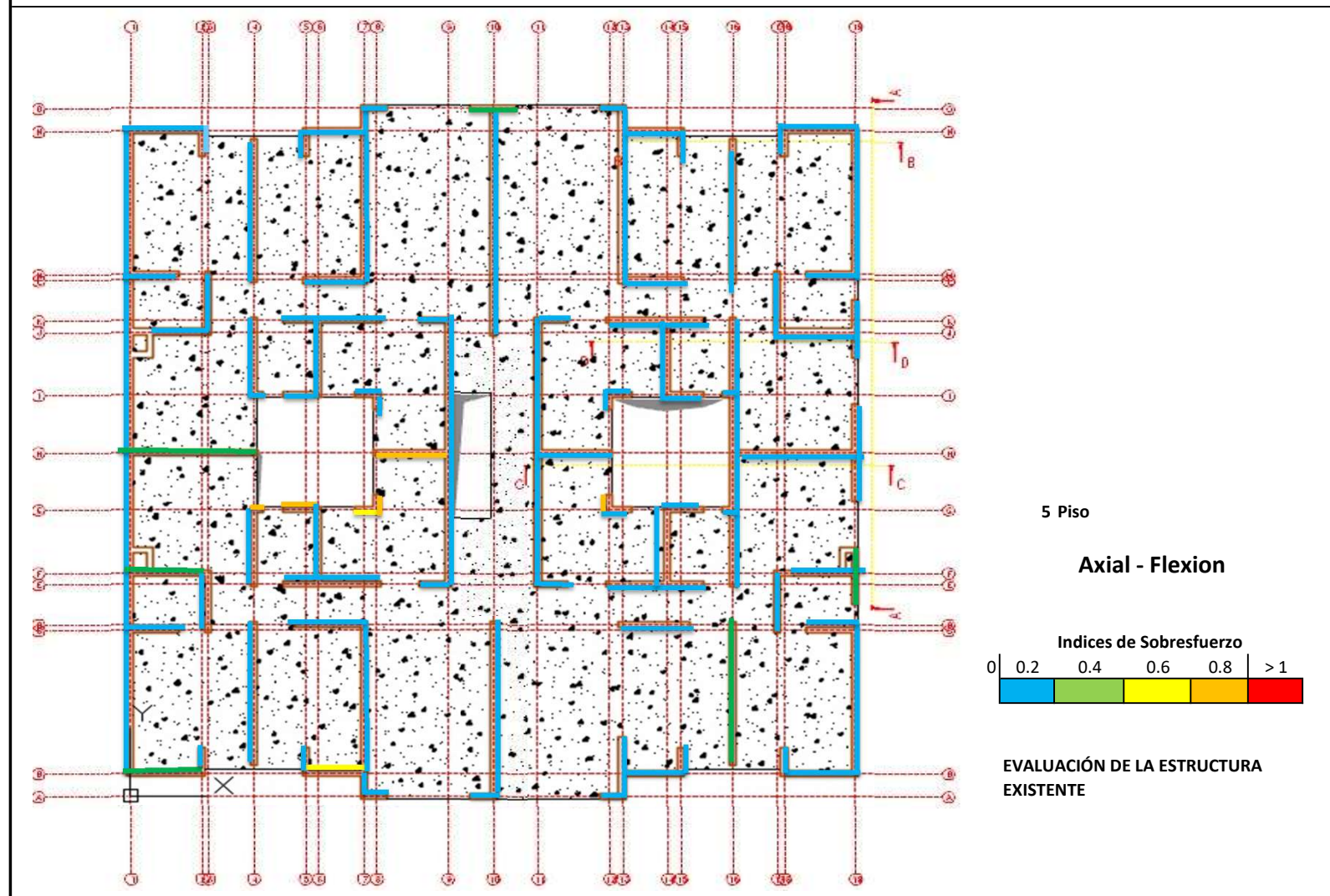
Axial - Flexion

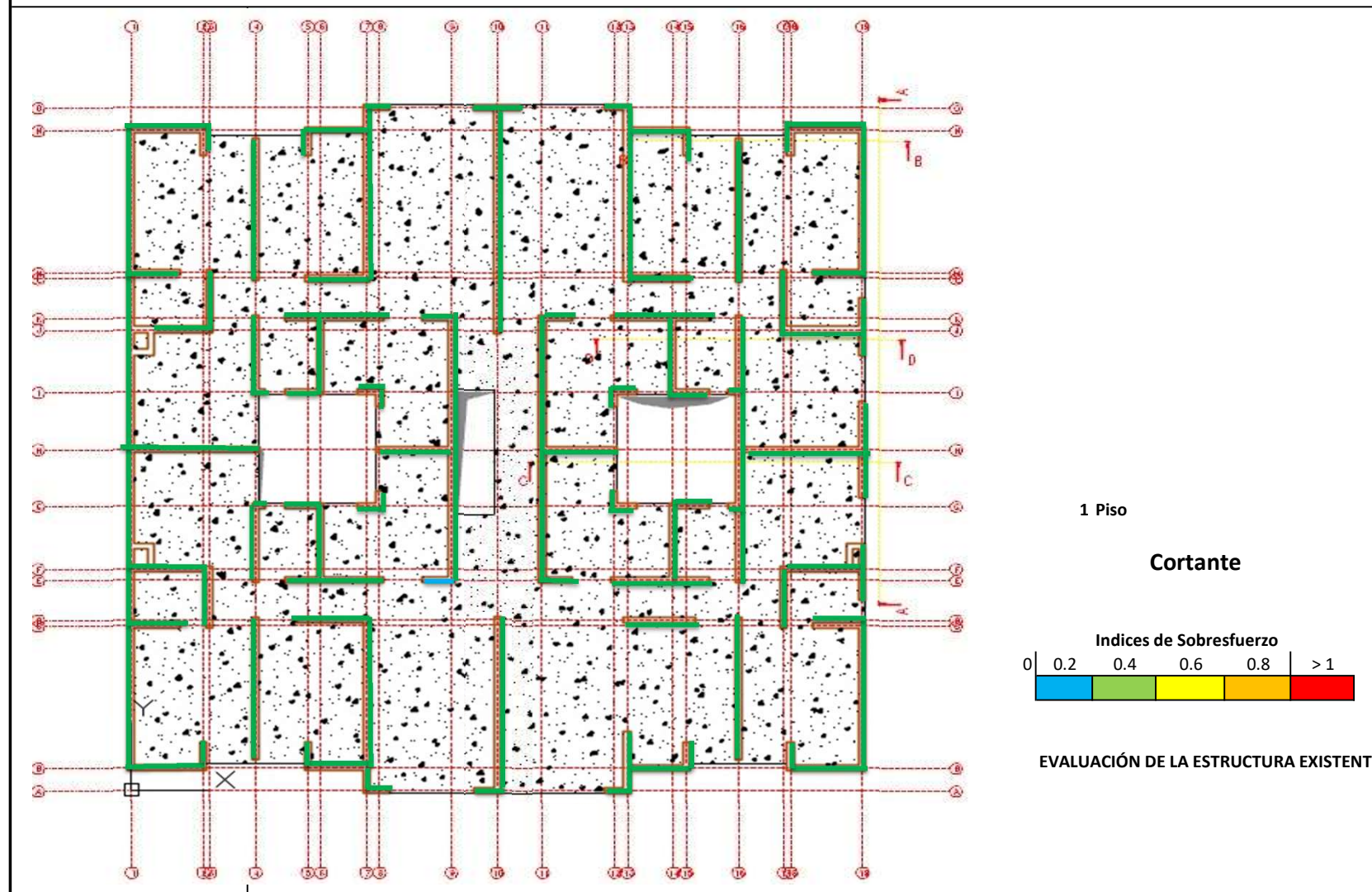


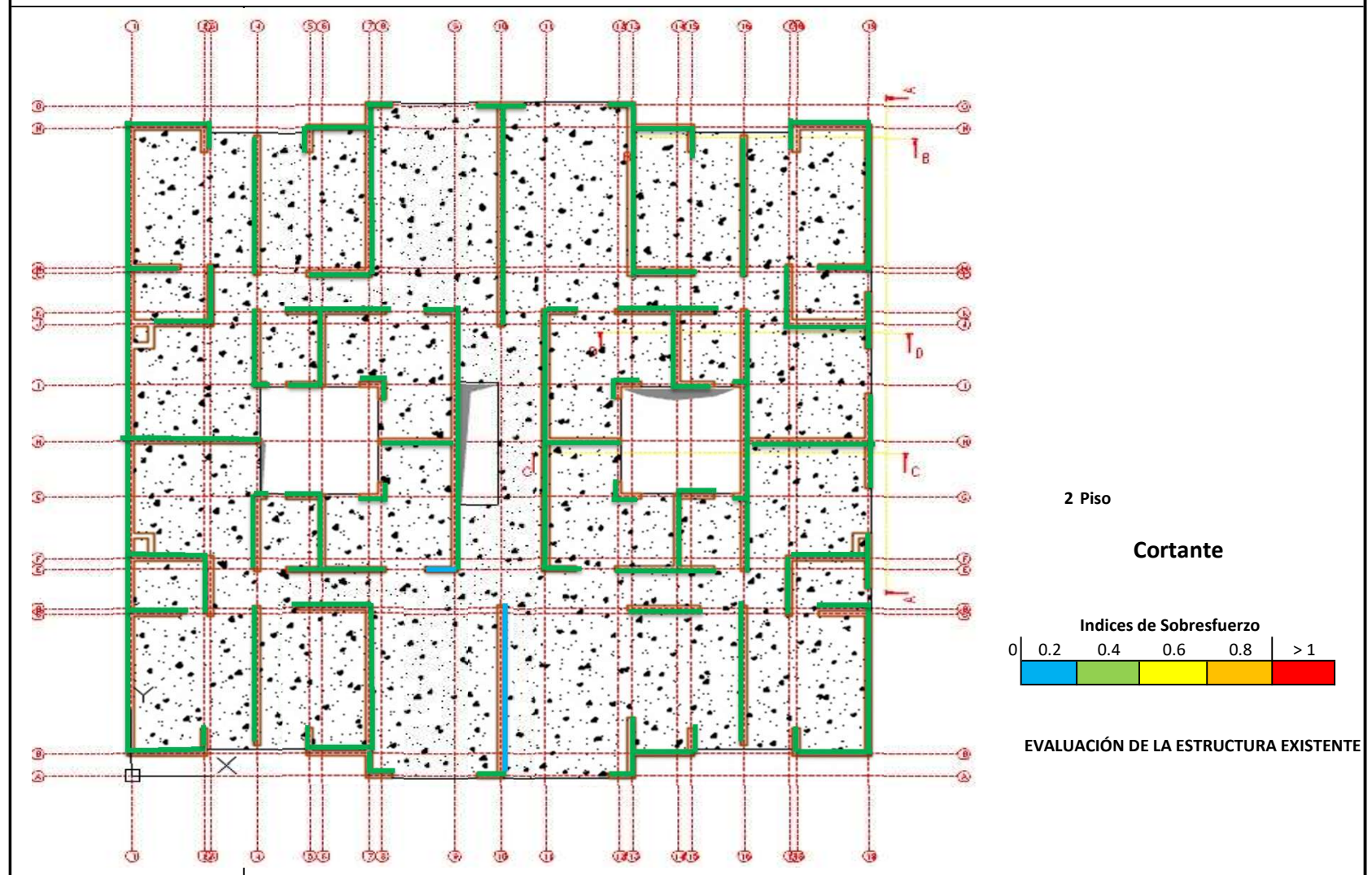
EVALUACIÓN DE LA ESTRUCTURA EXISTENTE

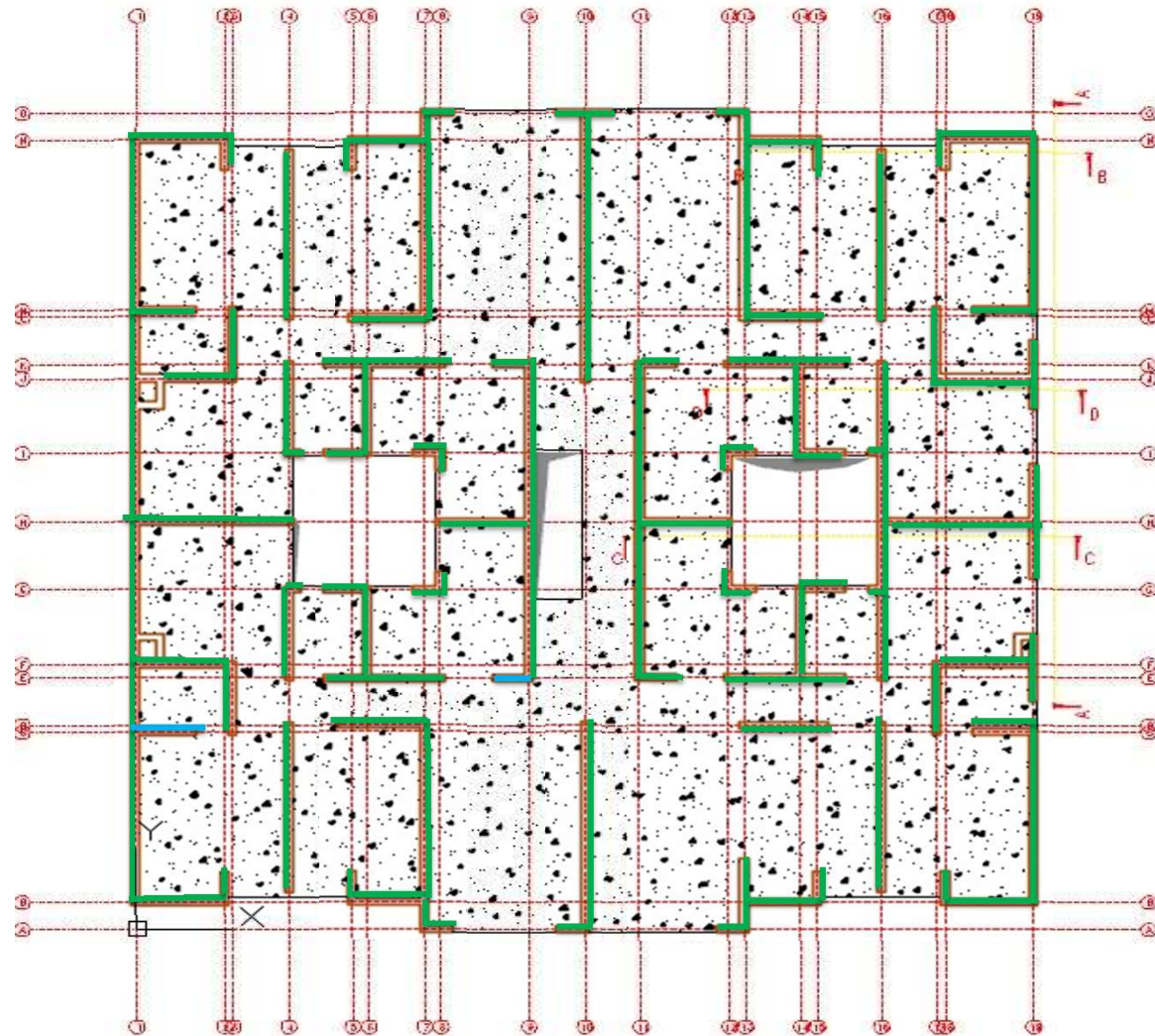






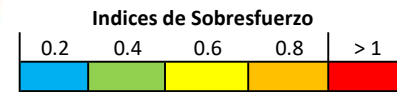






3 Piso

Cortante



EVALUACIÓN DE LA ESTRUCTURA EXISTENTE

